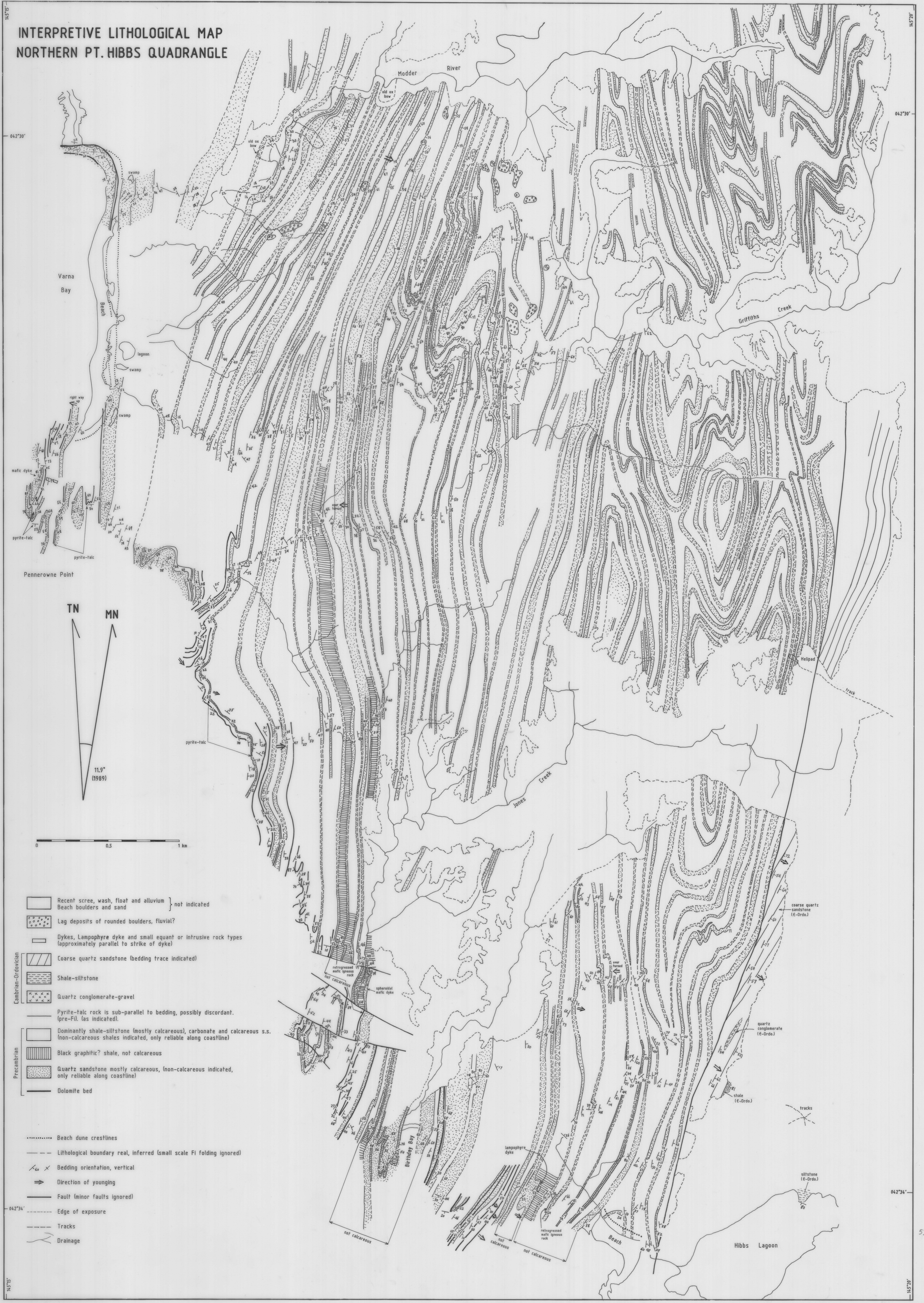
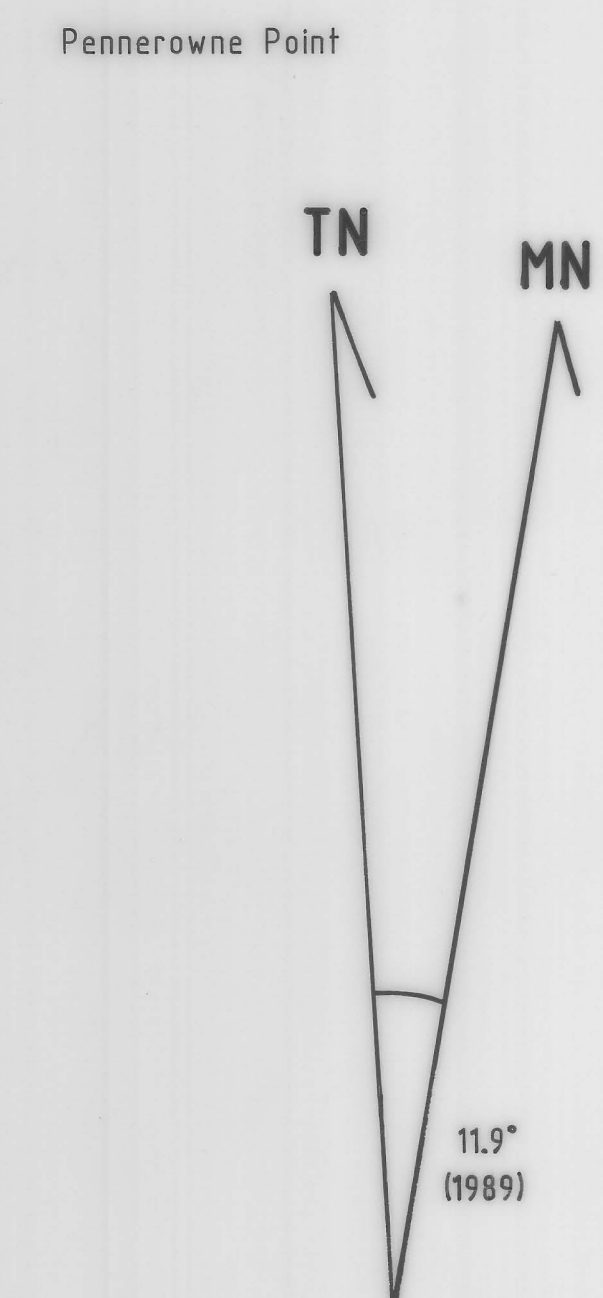


INTERPRETIVE LITHOLOGICAL MAP NORTHERN PT. HIBBS QUADRANGLE



042°30'

042°30'



0 0.5 1 km

- Recent scree, wash, float and alluvium } not indicated
- Beach boulders and sand
- Lag deposits of rounded boulders, fluvial?
- Dykes, Lampophyre dyke and small equant or intrusive rock types (approximately parallel to strike of dyke)
- Coarse quartz sandstone (bedding trace indicated)
- Shale-siltstone
- Quartz conglomerate-gravel
- Pyrite-talc rock is sub-parallel to bedding, possibly discordant. (pre-F1) (as indicated).
- Dominantly shale-siltstone (mostly calcareous), carbonate and calcareous s.s. (non-calcareous shales indicated, only reliable along coastline)
- Black graphitic? shale, not calcareous
- Quartz sandstone mostly calcareous, (non-calcareous indicated, only reliable along coastline)
- Dolomite bed

- Beach dune crests
- Lithological boundary real, inferred (small scale F1 folding ignored)
- Bedding orientation, vertical
- Direction of younging
- Fault (minor faults ignored)
- Edge of exposure
- Tracks
- Drainage

042°34'