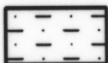


GEOLOGY OF THE ROSETTA LANDSLIDE AREA

5 cm



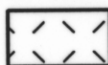
TERTIARY DEPOSITS



PERMIAN SEDIMENTS



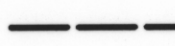
Geological boundary (position approx)



JURASSIC DOLERITE



ACTIVE LANDSLIDE



Fault (position approx)



TRIASSIC SEDIMENTS



Strike and dip of beds

