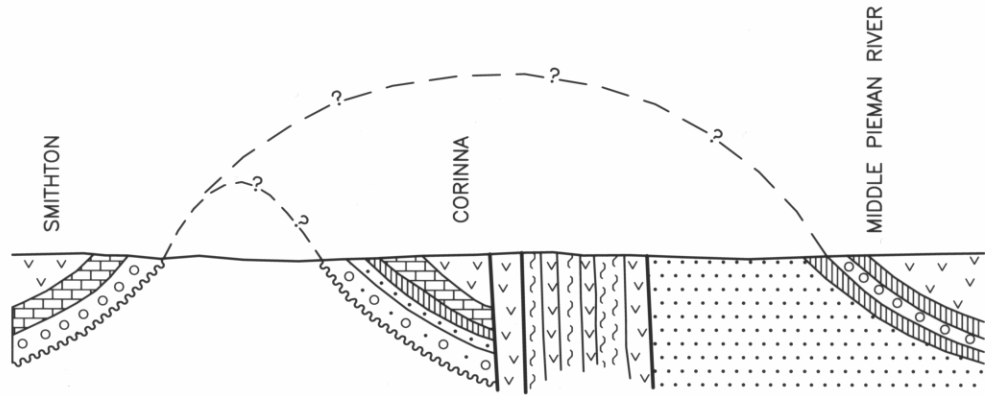


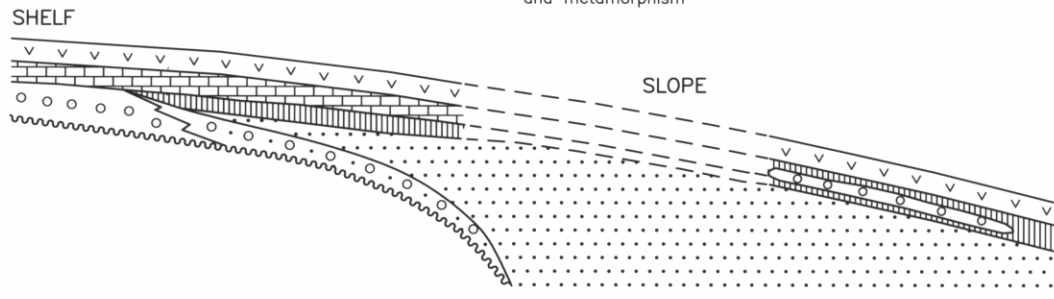
SMITHTON - MIDDLE PIEMAN RIV, SIMPLIFIED GEOL SECTN
 GONDWANA CONF. 1991 - ABSTRACTS VOLUME AUTHOR: N.J. TURNER
 DIVISION OF MINES & MINERAL RESOURCES DRAFTSPERSON: JSL 20/05/91 **5378**



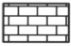


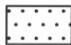

5 cm

60 km approx



?
 Most intense zone of Penguin deformation and metamorphism



- | | | | |
|---|---------------------------|---|--|
|  | Basalt and sediments |  | Shallow water sandstone and conglomerate |
|  | Stromatolitic dolomite |  | Turbiditic sandstone and conglomerate |
|  | Mainly siltstone/mudstone |  | Turbiditic sandstone |
|  | Schistose meta sediments | | |

364

5378