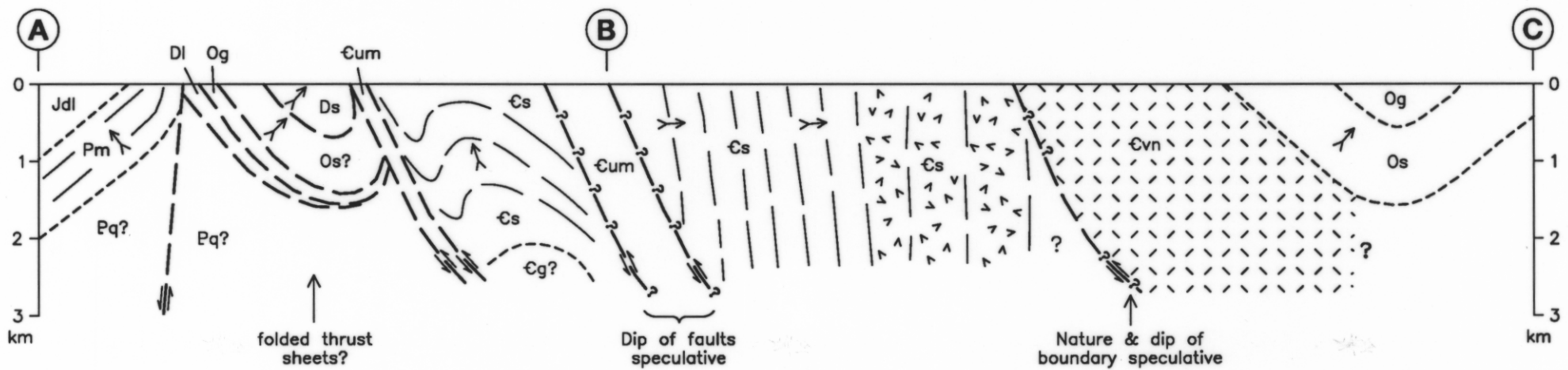




POINT HIBBS AREA - INTERPRETATIVE SECTN A-B-C, V/H=1
 FIGURE 3 REPORT: 1991/21 AUTHOR: D.B.SEYMOUR
 DIVISION OF MINES & MINERAL RESOURCES DRAFTSPERSON: J. LADANIWSKYJ 13/1/92 **5395 C**



Trace of bedding within units
 >> Stratigraphic younging within units