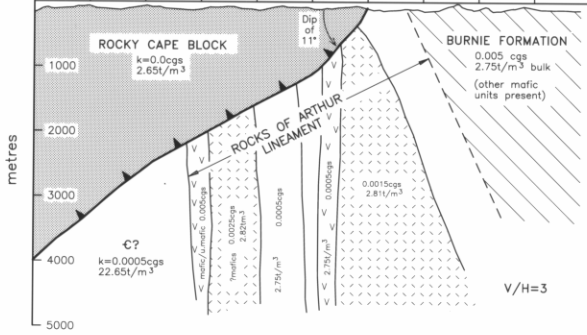
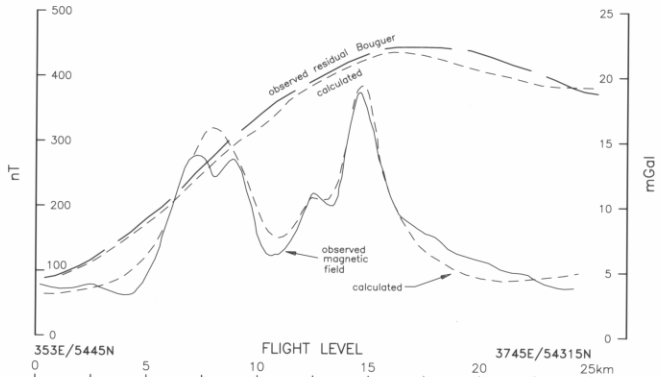


NW TAS - GEOPHYSICS & STRUCTURE

REPORT: (external) [redacted] AUTHORS: P.W.BAILLIE, D.E.LEAMAN, C.M.POWELL (PWB5)
 TASMANIA DEPARTMENT OF MINES DRAFTSPERSON: J. LADANIWSKYJ 14/3/92 **5407 A**



A

A'