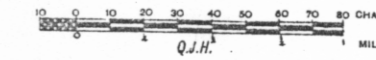


GEOLOGICAL SKETCH MAP OF AVOCA TIN FIELD

SCALE



LEGEND

CHARACTERISTICS

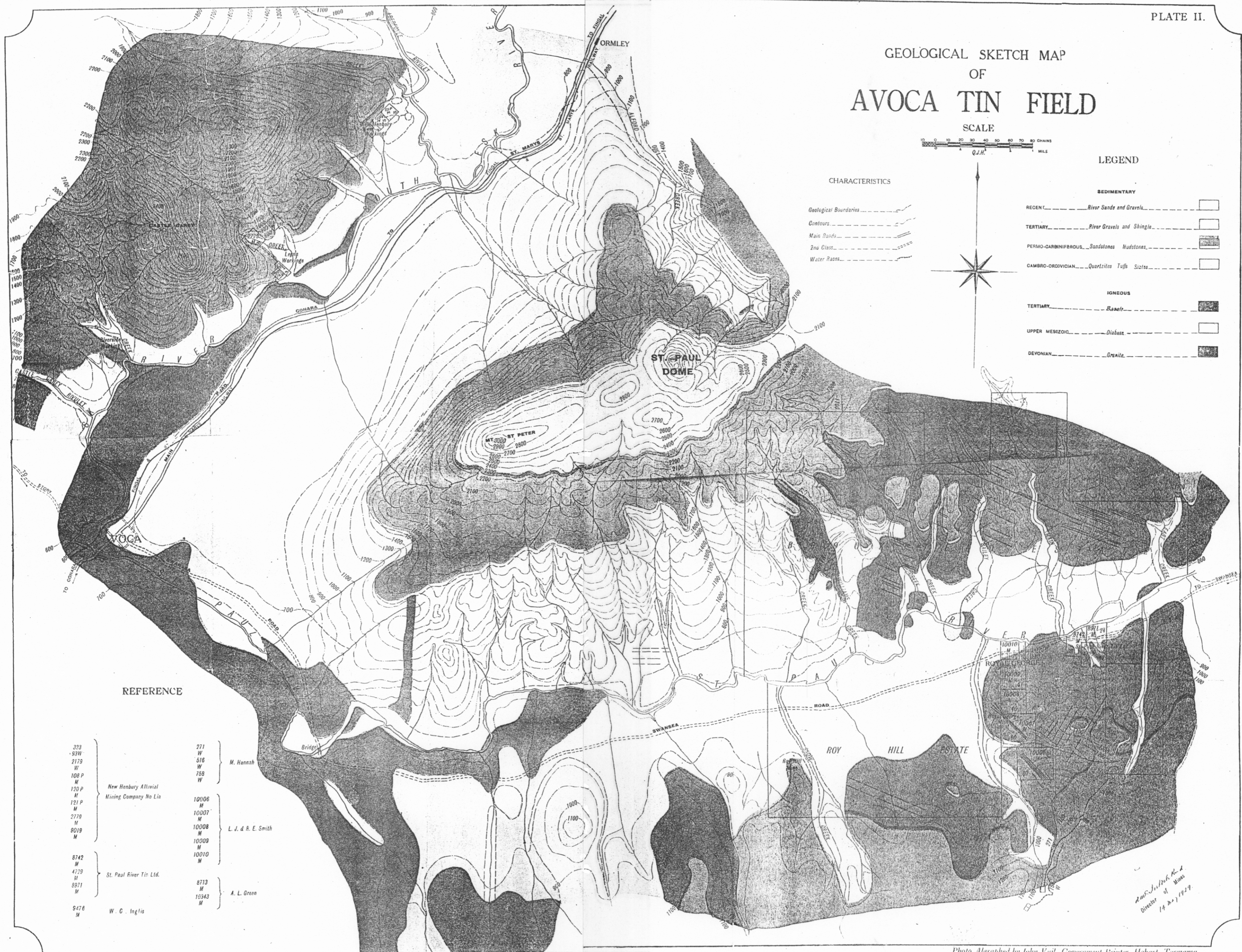
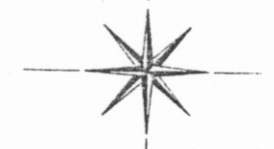
- Geological Boundaries
- Contours
- Main Roads
- 2nd Class
- Water Races

SEDIMENTARY

- RECENT River Sands and Gravels
- TERTIARY River Gravels and Shingle
- PERMO-CARBONIFEROUS Sandstones Mudstones
- CAMBRO-ORDOVICIAN Quartzites Tufts Slatcs

IGNEOUS

- TERTIARY Basalt
- UPPER MESOZOIC Diabase
- DEVONIAN Granite

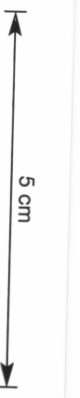


REFERENCE

323 93W 2179 W 108 P M 120 P M 121 P M 2779 M 9019 M	New Henbury Alluvial Mining Company No Lia	271 W 676 W 758 W	M. Hannah
8742 M 4779 M 8971 M	St. Paul River Tin Ltd.	10006 M 10007 M 10008 M 10009 M 10010 M	L. J. & R. E. Smith
5476 M	W. C. Inglis	8713 M 16343 M	A. L. Green

*Amos J. ...
Director of Mines
14 Dec 1929*

Photo Algraphed by John Vail, Government Printer, Hobart, Tasmania



541

154