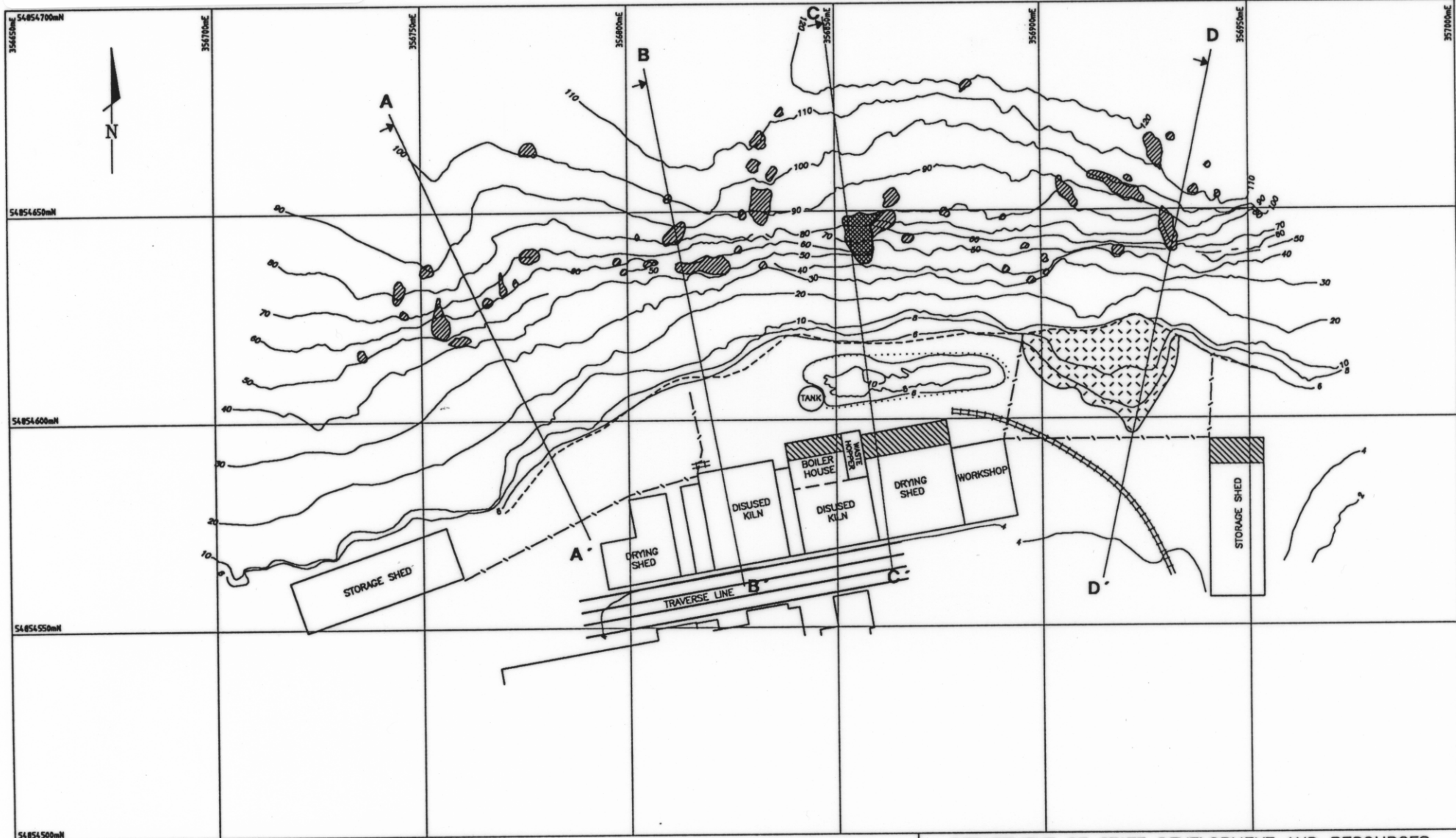






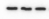
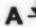


631

5 cm



LEGEND

-  PROPOSED DEMOLITION
 -  EXISTING BUND
 -  POTENTIALLY UNSTABLE BLOCKS
POSITION IDENTIFIED AND SIZE ESTIMATED BY INSPECTION
 -  SCREE SLIDE
 -  UNSTABLE COLUMN
POSITION IDENTIFIED AND SIZE ESTIMATED BY INSPECTION
 -  EXISTING FENCE
 -  CLIFF BASE
 -  SECTION LINES
- 0 50 100 m
SCALE

DEPARTMENT OF STATE DEVELOPMENT AND RESOURCES
DIVISION OF MINES

THE NUT - STANLEY SITE PLAN PROPOSED DEMOLITION

CONTOUR INFORMATION ADAPTED FROM FIG.1, H.E.C.E.C. REPORT BY F.J.BAYNES, (26/8/90) PLAN 5437A
ISSUED: 5/4/93

5437A

File: DEMOL-P.PLT Processed: 2/4/93 at 18:09 Scale: Automatic
Run script file: A.DEMOL-P.SCR
JSL