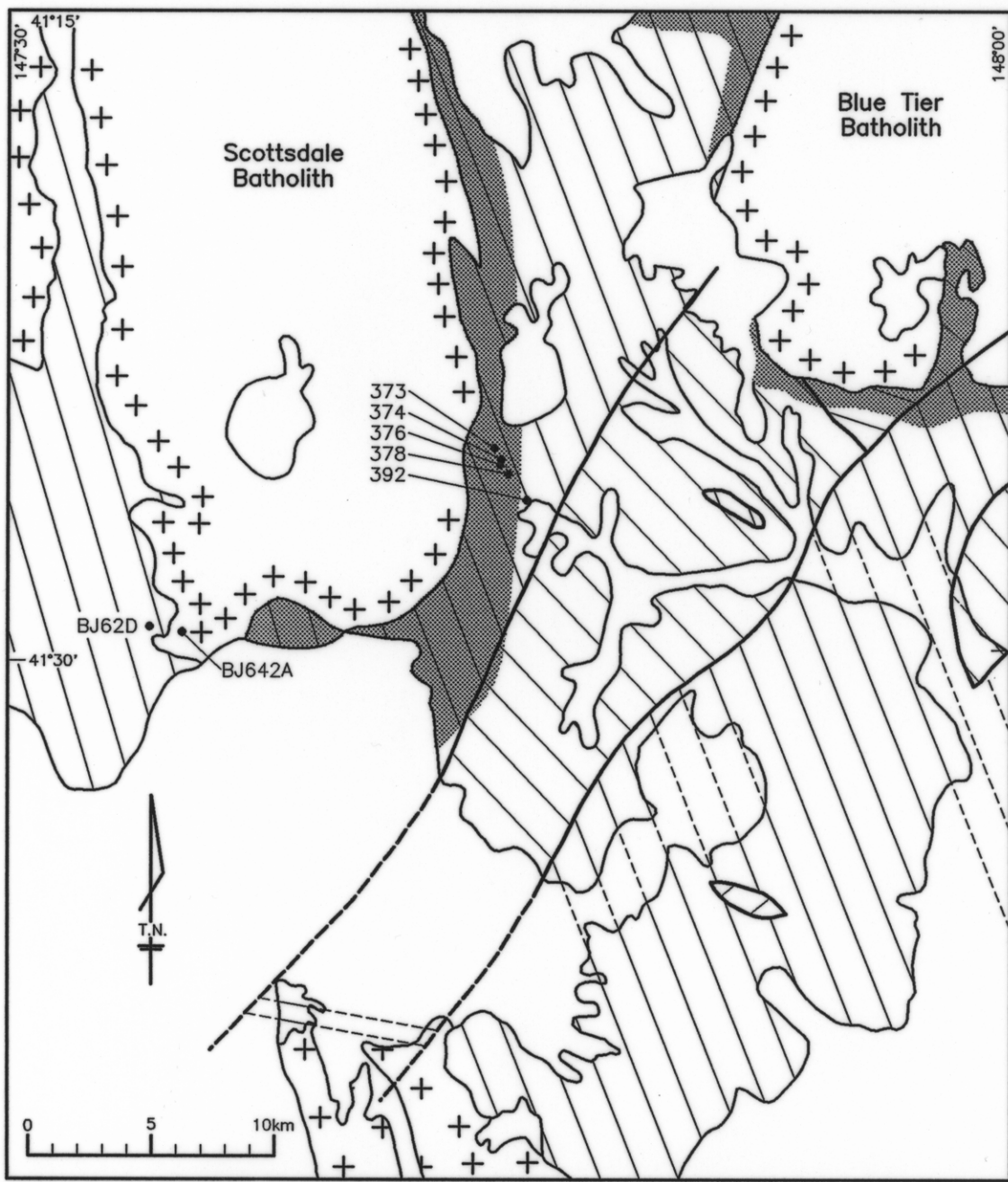



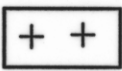

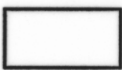
5 cm

640

N.E. TASMANIA
MATHINNA BEDS/KINK ZONES

FIGURE No. REPORT:1992/34 AUTHOR: B.GOSCOMBE
TASMANIA DEPARTMENT OF MINES DRAFTSPERSON: AJH 06/05/93 **5439A**



-  *Mathinna Beds: D₁ cleavage trace and D₂ megakink axial trace.*
-  *Devonian granitoids.*
-  *Contact aureole where recognised by spotting.*
-  *Parmeener Supergroup and younger cover.*