

MINERAL RESOURCE ASSESSMENT OF SELECTED AREAS IN N.W. FOPRESTS (LEGEND)

FIGURE No.

REPORT:

AUTHOR: N.J.TURNER

TASMANIA DEPARTMENT OF MINES

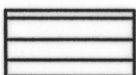
DRAFTSPERSON: AJH 28/06/93

5443C21

MINERAL RESOURCE POTENTIAL



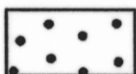
Granite may be relatively shallow along SW margin but probably generally deep; therefore generally low or low to moderate potential for Sn, W, Cu, pb, Zn, Ag, Au in fissure deposits. Low to moderate potential for base metals in sediments.



High potential for pyrite-copper, pyrite-magnetite, magnesite, ochre and silica flour. Low to moderate potential for base metals associated with sediments, tholeiitic metabasalts. Moderate to high potential for gold.



Moderate to high potential for gold along NW margin.



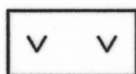
Low potential for metallic and industrial minerals.



High potential for silica flour and dolomite. Moderate potential for gold. Unknown potential for granite-related replacement/vein deposits. Low to moderate potential for base metals associated with sediments, tholeiitic metabasalts.



High potential for dolomite and silica flour. Moderate potential for gold.



Low to moderate potential for base metals associated with sediments, tholeiitic basalt.