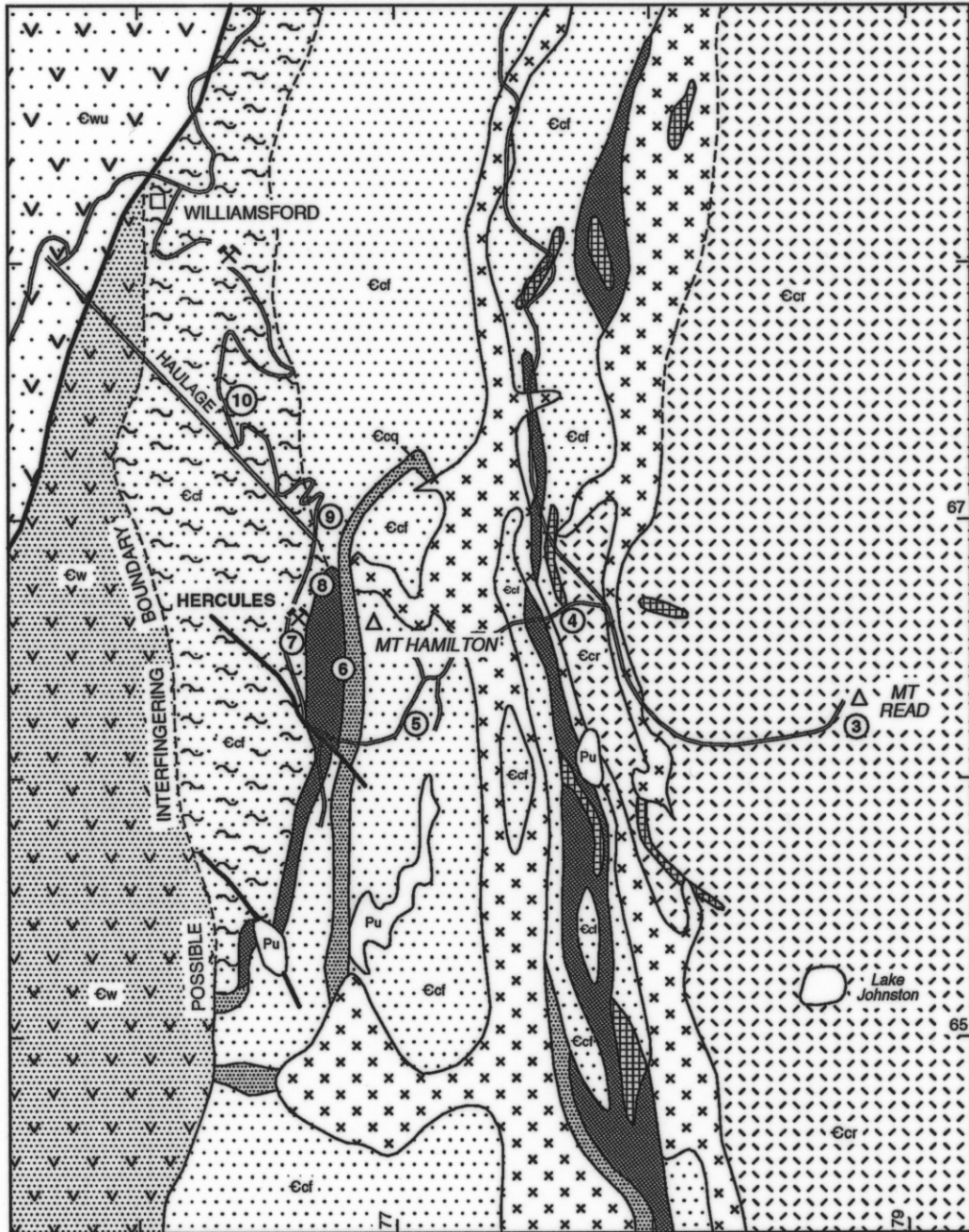


MRV - HERCULES - MT READ AREA GEOL

FIGURE 6 **REPORT: INTERNATIONAL EXCURSION 1993** **AUTHOR: K.D. CORBETT**

MINERAL RESOURCES TASMANIA DRAFTSPERSON: J. LADANIWSKYJ 26/8/93 **5450C**



<p>⑤ Excursion stop</p> <p>Pu Permo-Carboniferous pebbly siltstone</p> <p>CAMBRIAN MT READ VOLCANICS</p> <p>⊕ Cr Mainly rhyolite lava and pumice breccia - Central Volcanic Complex</p> <p>⊗ ⊗ ⊗ Felsic intrusives and associated lavas - Central Volcanic Complex</p> <p>▣ Mafic dykes</p> <p>■ Black shale, siltstone</p>	<p>⊕ Cf Felsic volcanics-mainly pumice breccia and sandstone</p> <p>⊕ Cq Quartz-bearing mass-flow volcanics (hangingwall unit)</p> <p>⊕ Footwall alteration zone</p> <p>⊕ ⊗ White Spur Formation - interbedded volcaniclastic sandstone, siltstone, shale</p> <p>⊕ ⊗ ⊗ Western Volcano-Sedimentary Sequence undifferentiated</p>
--	--

0 0.5 1km

5450C