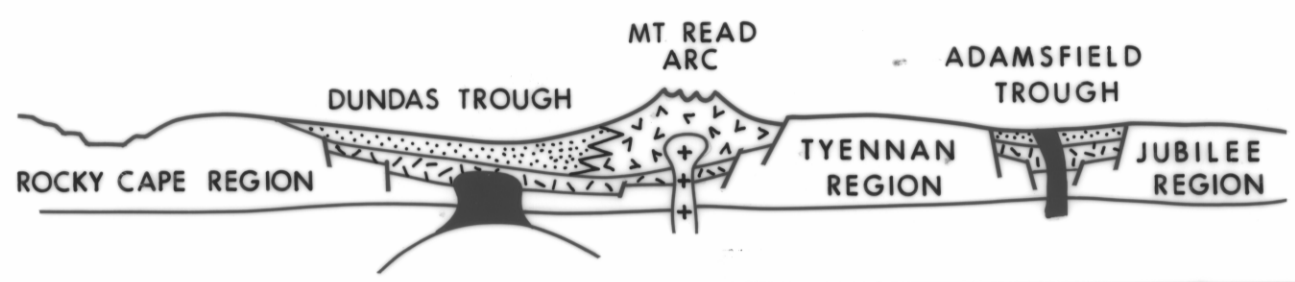
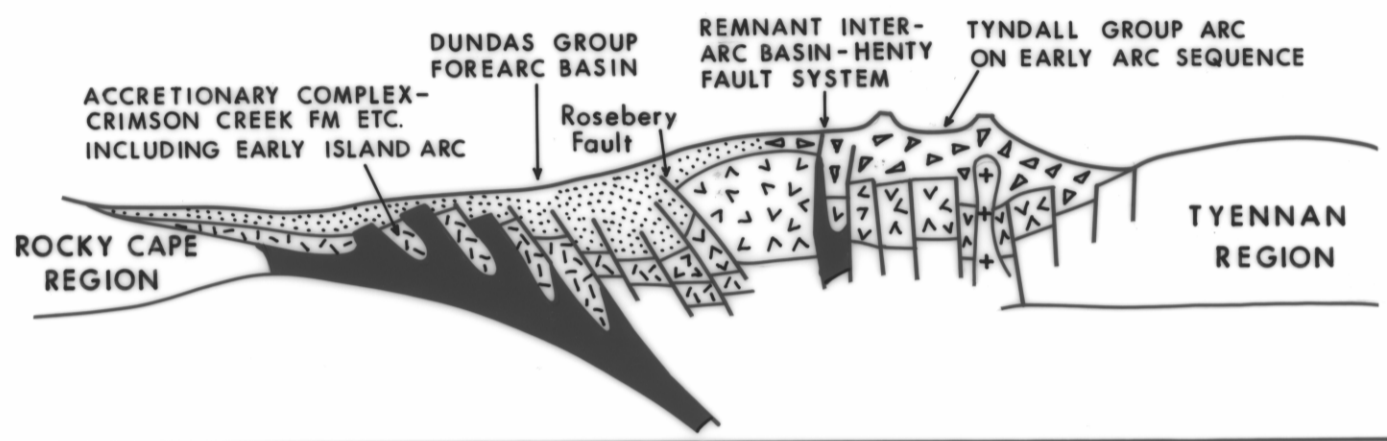


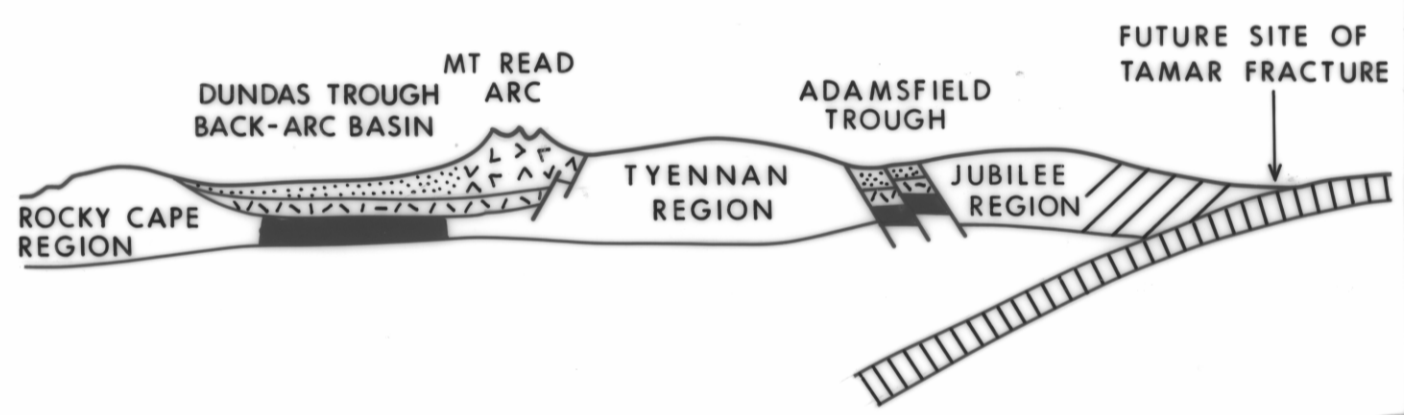
1. RIFT MODEL - after Corbett et al (1972), based on Campana & King (1963)



2. PLATE MODEL - SUBDUCTION ZONE IN DUNDAS TROUGH after Corbett & Lees (1987) and Green (1983)

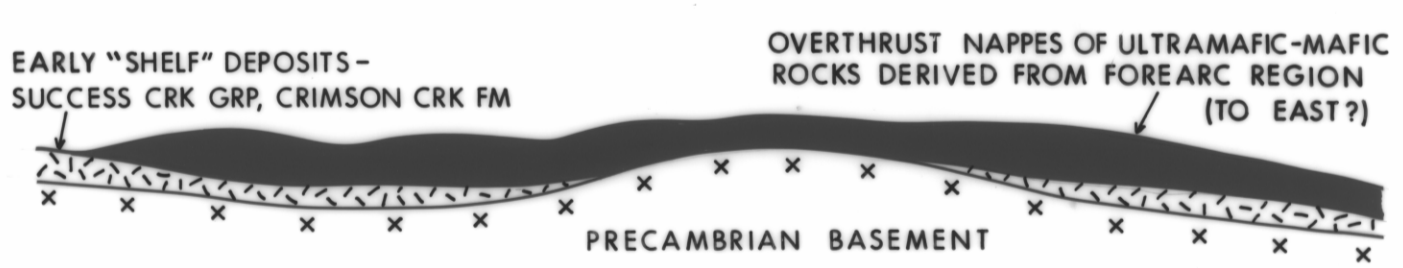


3. PLATE MODEL - SUBDUCTION ZONE AT SITE OF TAMAR FRACTURE



4. ALLOCHTHON MODEL - after Berry & Crawford (in press)

4a. MIDDLE MIDDLE CAMBRIAN - emplacement of allochthon(s)



4b. LATE MIDDLE CAMBRIAN to LATE CAMBRIAN - post-collision uplift of Tyennan Region and formation of troughs.

