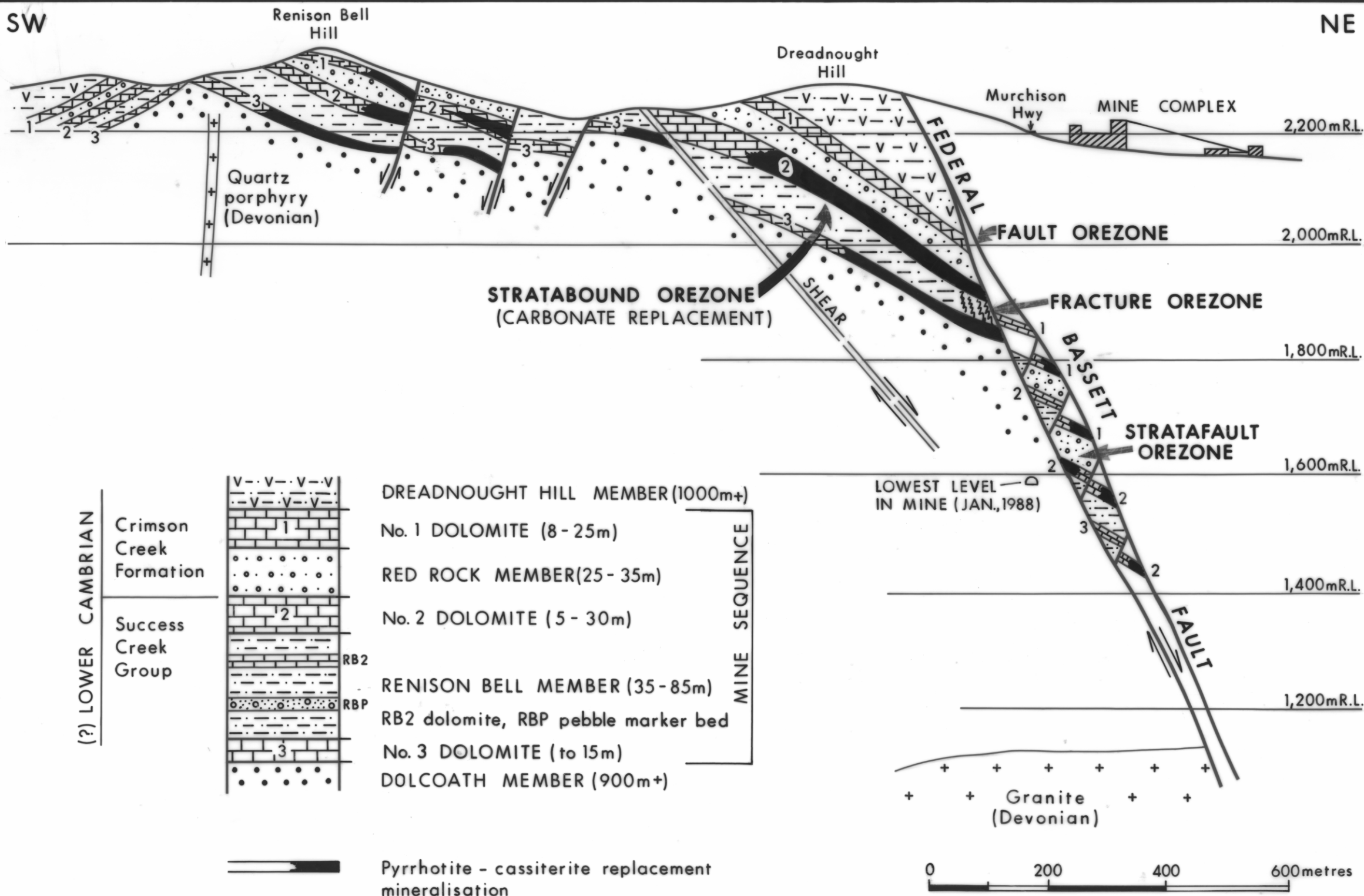


SW

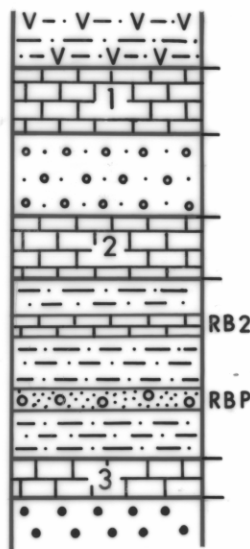
NE



(?) LOWER CAMBRIAN

Crimson Creek Formation

Success Creek Group



DREADNOUGHT HILL MEMBER (1000m+)

No. 1 DOLOMITE (8-25m)

RED ROCK MEMBER (25-35m)

No. 2 DOLOMITE (5-30m)

RENISON BELL MEMBER (35-85m)

RB2 dolomite, RBP pebble marker bed

No. 3 DOLOMITE (to 15m)

DOLCOATH MEMBER (900m+)

MINE SEQUENCE



Pyrrhotite - cassiterite replacement mineralisation

a