

5 cm

465434

483440

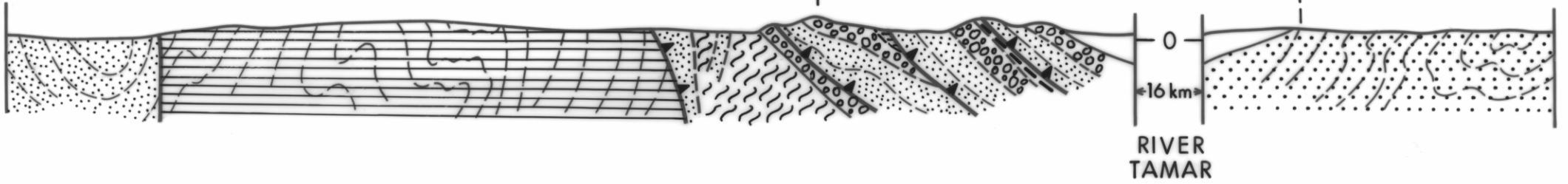
497447




500455


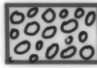

DAZZLER RANGE


PEAKED HILL

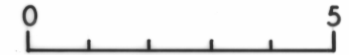
LEFROY



-  Cambrian acid-intermediate volcanic rocks
-  "Eo-Cambrian" - Cambrian sedimentary sequences
-  Precambrian comparatively unmetamorphosed sequences

-  Silurian to Lower Devonian interbedded sandstone/mudstone
-  Ordovician dominantly siliceous clastic deposits and limestone sequences
-  Serpentinite and associated rocks

-  Lower Ordovician to Lower Devonian quartz-wacke sequences



HORIZONTAL SCALE IN KILOMETRES
V = H

5465G

