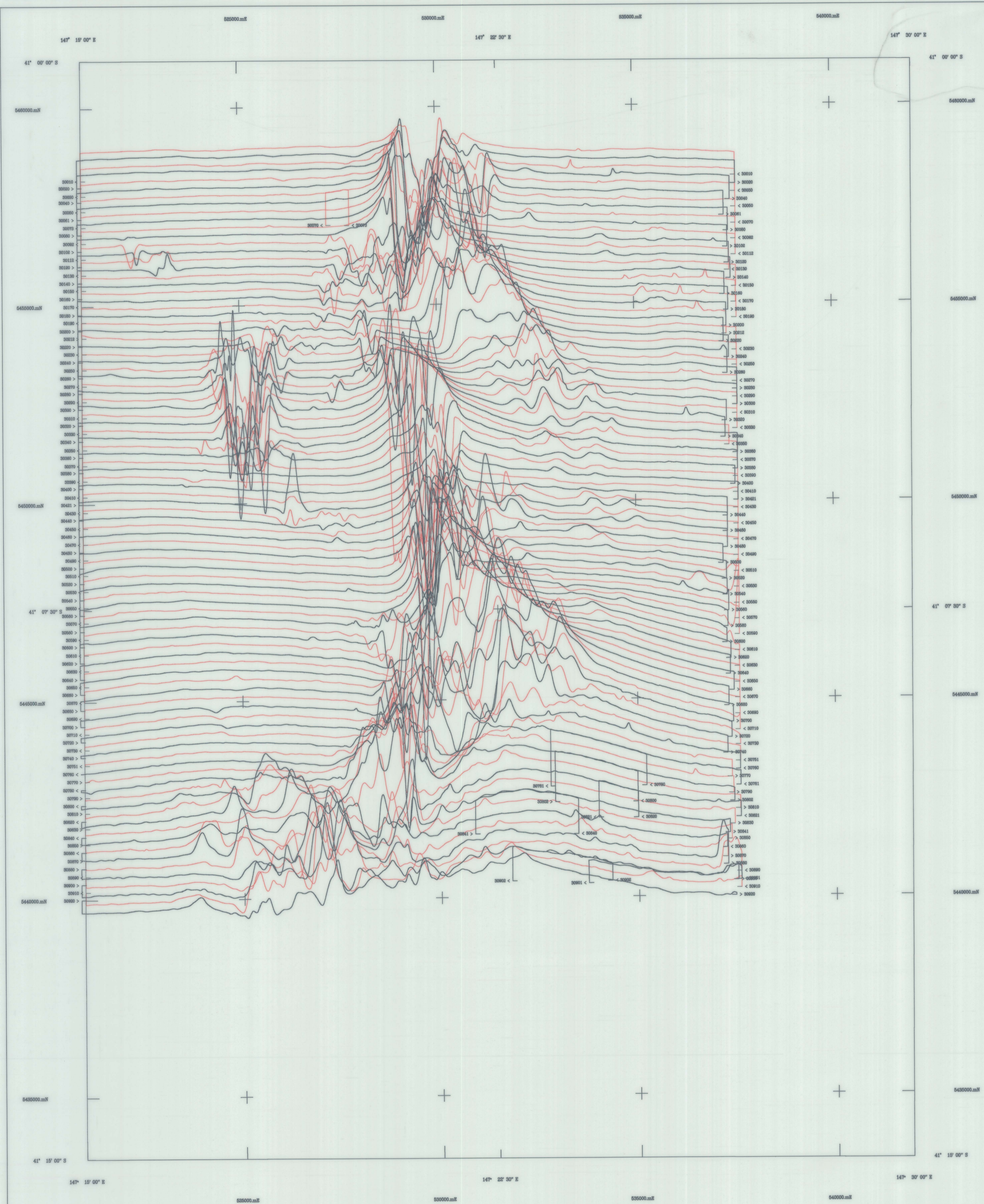


1:50,000 AIRBORNE GEOPHYSICAL SERIES

PIPERS RIVER SURVEY

TOTAL MAGNETIC INTENSITY PROFILES
MINERAL RESOURCES TASMANIA



AIRBORNE SURVEY EQUIPMENT

Abrams
 Magnetometer
 Magnetometer Resolution
 Magnetometer Sample Interval
 Data Acquisition
 Data Recording
 Spectrometer
 Crystal Size
 Spectrometer Sample Interval
 Flight Path Record
 GPS Navigation System

Ball 206 - 3 VI-FHE
 Geometrics G833 Helium Vapor
 0.01 nT
 0.20 seconds
 Geo Instruments Model 5000
 1.44 Mb floppy disk
 Explorer G880
 16.01 downward array
 1.0 seconds (approx 25 metres)
 VHS Colour Video System
 Novatel GPS Receiver

AIRBORNE SURVEY SPECIFICATIONS

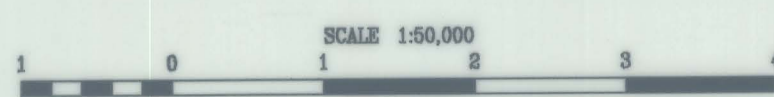
Flight Line Direction 090 - 270 degree
 Flight Line Separation 200 metres
 The Line Direction 000 - 150 degrees
 The Line Separation 400 metres
 Terrain Clearance 80 metres (MTC)

TOTAL MAGNETIC INTENSITY STACKED PROFILES

Diurnal variations removed
 IGRF (1990) updated to 1983.0 removed
 Average survey base station value added to datum
 Datum Base Value 5000 nT
 Vertical Scale 50 nT / cm

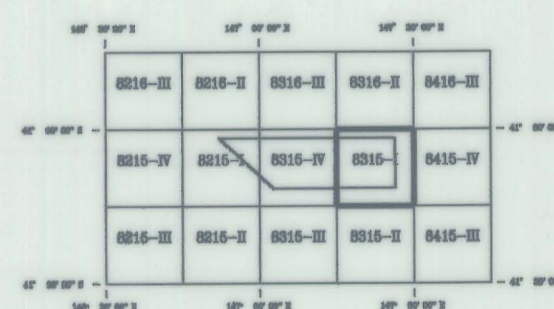
Pipers River Aeromagnetic Survey
 Tasmania Development and Resources
 Minerals Resources Tasmania
 Surveyed and compiled Geo Instruments Pty. Ltd
 Processed by Kevron Geophysics Pty. Ltd.
 October - November 1993

Mineral Resources Tasmania Reserved
 Project Supervision by Mineral Resources Tasmania



MAP GRID ZONE 56
 SPHEROID : Australian National
 PROJECTION : Universal Transverse Mercator

1:50,000 SHEET LOCATION



8315-I

