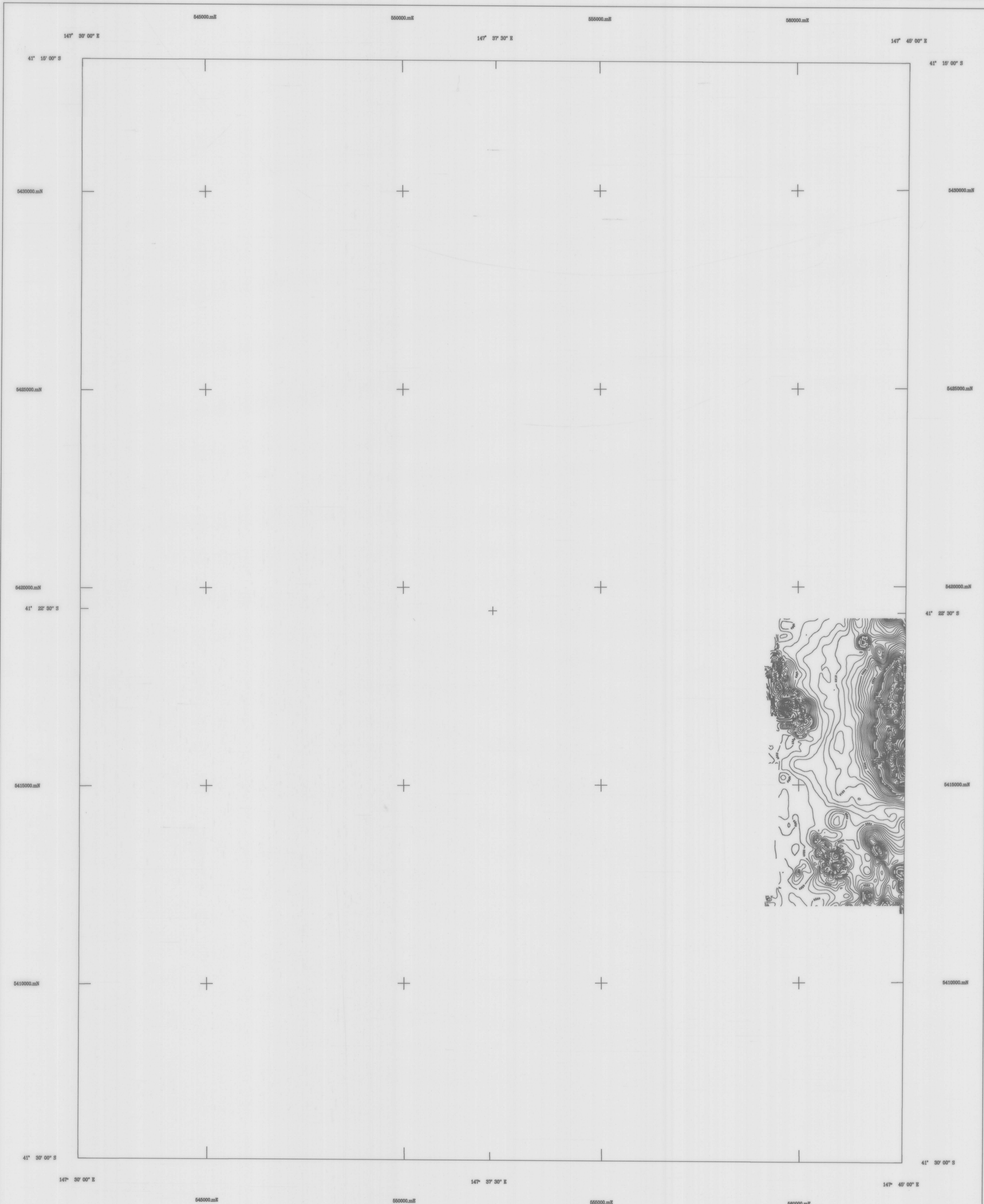


1:50,000 AIRBORNE GEOPHYSICAL SERIES

FINGAL SURVEY

TOTAL MAGNETIC INTENSITY CONTOURS  
MINERAL RESOURCES TASMANIA



**AIRBORNE SURVEY EQUIPMENT**

Aircraft	Bell 206 - 3 VH-YEH
Magnetometer	Geometrics G633 Helium Vapor
Magnetometer Resolution	0.01 nT
Magnetometer Sample Interval	0.20 seconds
Data Acquisition	Geo Instruments Model 2000
Data Recording	1.44 Mb floppy disks
Spectrometer	Explosionum G650
Crystal Size	16.81 downwards array
Spectrometer Sample Interval	1.0 Seconds (approx 25 metres)
Flight Path Record	VHS Colour Video System
GPS Navigation System	Novatel GPS Receiver

**AIRBORNE SURVEY SPECIFICATIONS**

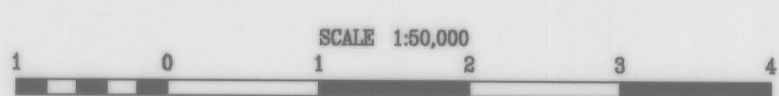
Flight Line Direction	090 - 270 degrees
Flight Line Separation	200 metres
Line Direction	000 - 180 degrees
Line Separation	400 metres
Terrain Clearance	60 metres (MTU)

**TOTAL MAGNETIC INTENSITY CONTOURS**

Diurnal variations removed  
 IGMF(1990) updated to 1993.8 removed  
 Average survey base station value and a  
 constant of 5000 nT added to datum  
 Grid mesh 50 x 50 metres  
 Contour Interval 2, 10, 50, 250, 1000 nT

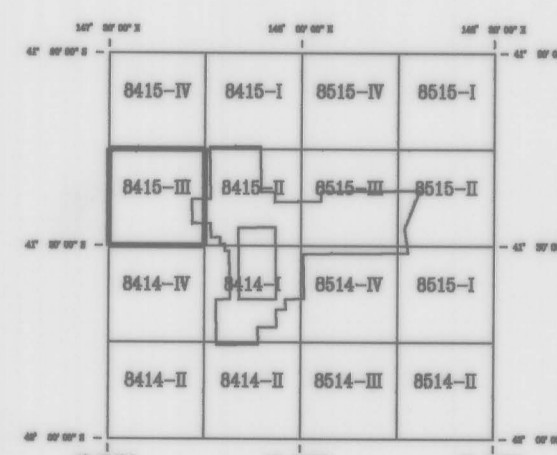
**Fingal Aeromagnetic Survey**  
 Tasmania Development and Resources  
 Minerals Resources Tasmania  
 Surveyed and compiled Geo Instruments Pty. Ltd  
 Processed by Kevron Geophysics Pty. Ltd.  
 October - November 1993

Mineral Resources Tasmania Reserved  
 Project Supervision by Mineral Resources Tasmania



MAP GRID ZONE 55  
 SPHEROID : Australian National  
 PROJECTION : Universal Transverse Mercator

**1:50,000 SHEET LOCATION**



8415-III