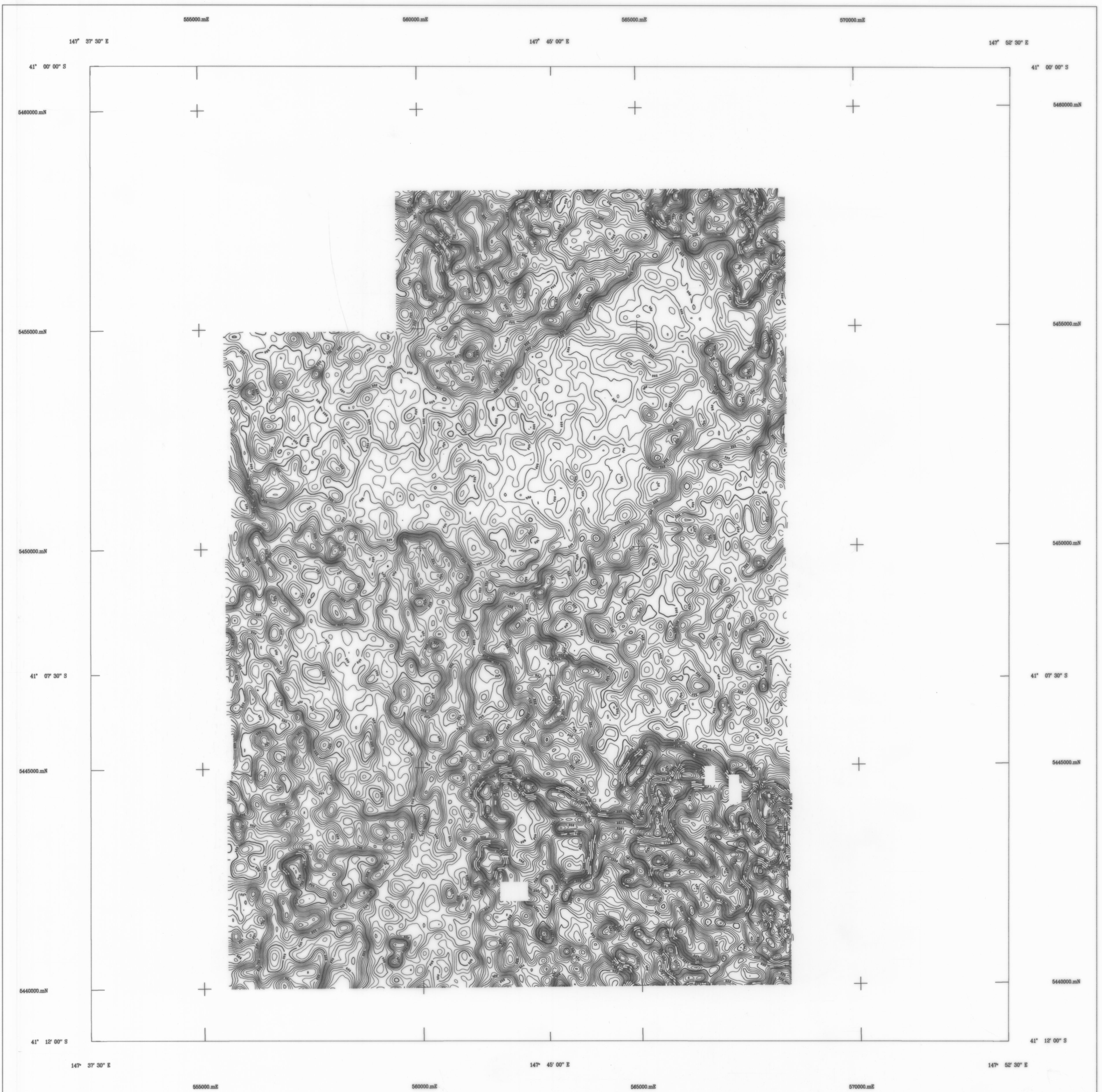
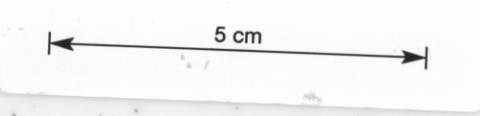


1:50,000 AIRBORNE GEOPHYSICAL SERIES

MT HORROR SURVEY



**AIRBORNE SURVEY EQUIPMENT**

Aircraft	Bell 206 - 3 YH-FBH
Magnetometer	Geometrics G833 Helium Vapour
Magnetometer Resolution	0.01 nT
Magnetometer Sample Interval	0.20 seconds
Data Acquisition	Geo Instruments Model 2000
Data Recording	1.44 Mb floppy disks
Spectrometer	Exploranium G8550
Spectrometer Sample Interval	16.00 downward array
Flight Path Record	1.0 Seconds (approx 36 metres)
GPS Navigation System	VES Colour Video System
	Novatel GPS Receiver

**AIRBORNE SURVEY SPECIFICATIONS**

Flight Line Direction	090 - 270 degrees
Flight Line Separation	200 metres
The Line Direction	000 - 180 degrees
The Line Separation	400 metres
Terrain Clearance	80 metres (MTC)

**TOTAL COUNT CONTOURS**

Data has been corrected for aircraft and cosmic backgrounds. Height corrected to a constant datum of 80 metres, minimum height of 20 and a maximum of 300 metres.

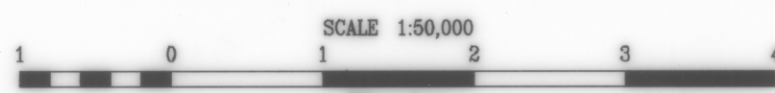
Grid Mesh 50 x 50 metres

For the purpose of contouring a 3x3 average convolution filter has been applied to the grid.

Contour Interval 25, 100, 500, 1000 cps

**Mt Horror Airborne Geophysical Survey**  
 Tasmania Development and Resources  
 Minerals Resources Tasmania  
 Surveyed and compiled Geo Instruments Pty. Ltd  
 Processed by Kevron Geophysics Pty. Ltd.  
 October - November 1993

Crown Copyright Reserved  
Project Supervision by Mineral Resources Tasmania



MAP GRID ZONE 56  
SPHEROID : Australian National  
PROJECTION : Universal Transverse Mercator

**1:50,000 SHEET LOCATION**

