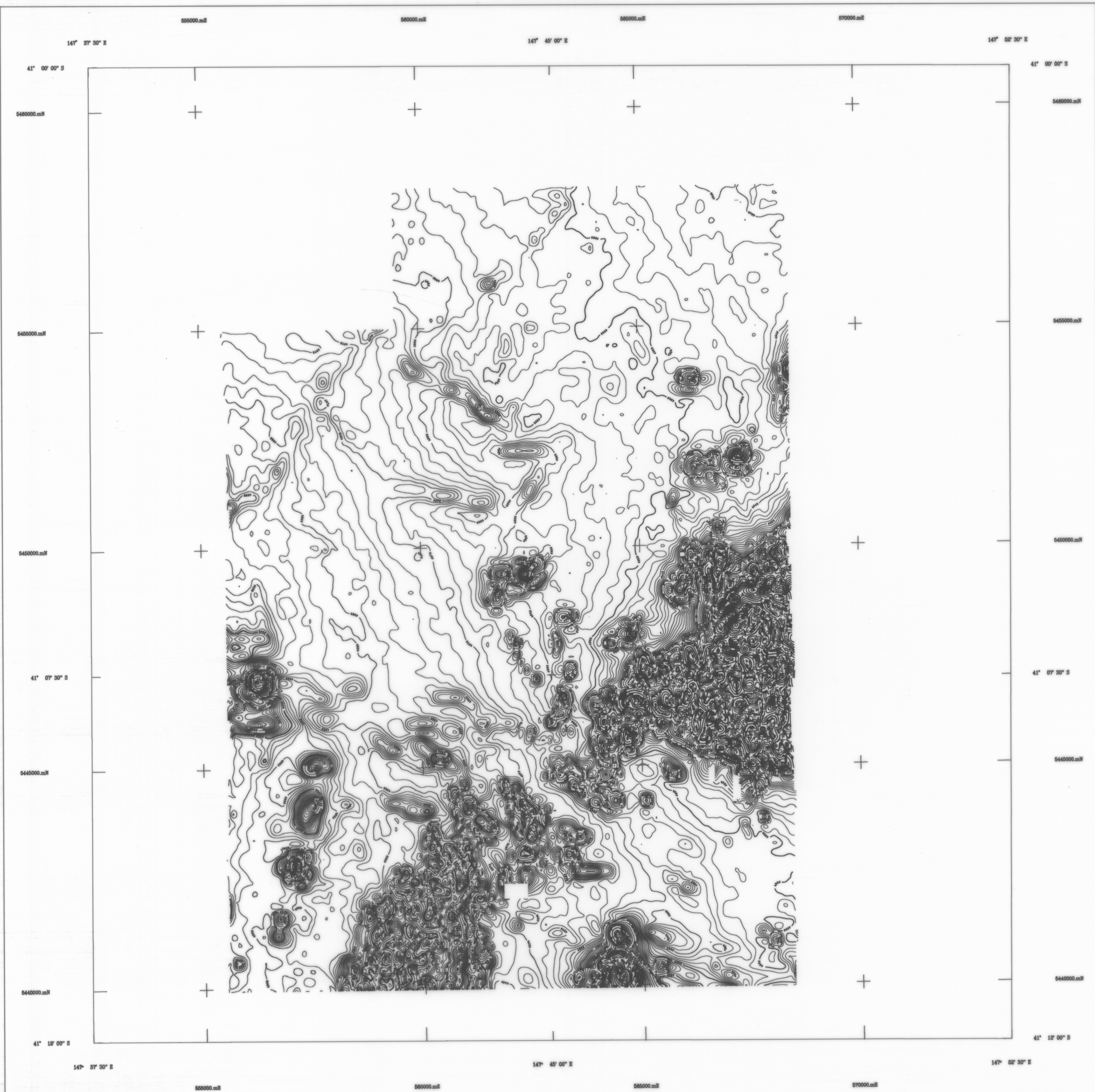


1:50,000 AIRBORNE GEOPHYSICAL SERIES

MT HORROR SURVEY

TOTAL MAGNETIC INTENSITY CONTOURS  
MINERAL RESOURCES TASMANIA



**AIRBORNE SURVEY EQUIPMENT**

Aircraft  
Magnetometer  
Magnetometer Resolution  
Magnetometer Sample Interval  
Data Acquisition  
Data Recording  
Spectrometer  
Crystal Size  
Spectrometer Sample Interval  
Flight Path Record  
GPS Navigation System

Bell 206 - 3 VH-FBH  
Geometrics G833 Helium Vapour  
0.01 nT  
0.20 seconds  
Geo Instruments Model 2000  
1.44 Mb floppy disks  
Exploranium G820  
16-bit downward array  
1.0 Seconds (approx 50 metres)  
VHS Colour Video System  
Novatel GPS Receiver

**AIRBORNE SURVEY SPECIFICATIONS**

Flight Line Direction  
Flight Line Separation  
The Line Direction  
The Line Separation  
Terrain Clearance

090 - 270 degrees  
200 metres  
000 - 150 degrees  
400 metres  
80 metres (MTC)

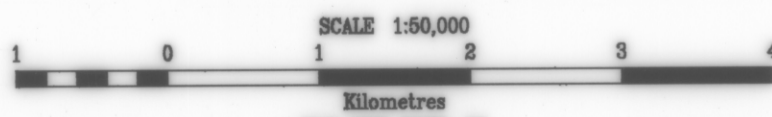
**TOTAL MAGNETIC INTENSITY CONTOURS**

Diurnal variations removed  
IGRF(1990) updated to 1993.6 removed  
Average survey base station value and a  
constant of 5000 nT added to datum

Grid mesh 50 x 50 metres  
Contour interval 2, 10, 50, 250, 1000 nT

**Mt Horror Aeromagnetic Survey**  
Tasmania Development and Resources  
Minerals Resources Tasmania  
Surveyed and compiled Geo Instruments Pty. Ltd  
Processed by Kevron Geophysics Pty. Ltd.  
October - November 1993

Mineral Resources Tasmania Reserved  
Project Supervision by Mineral Resources Tasmania



MAP GRID ZONE 56  
SPHEROID : Australian National  
PROJECTION : Universal Transverse Mercator

**1:50,000 SHEET LOCATION**

