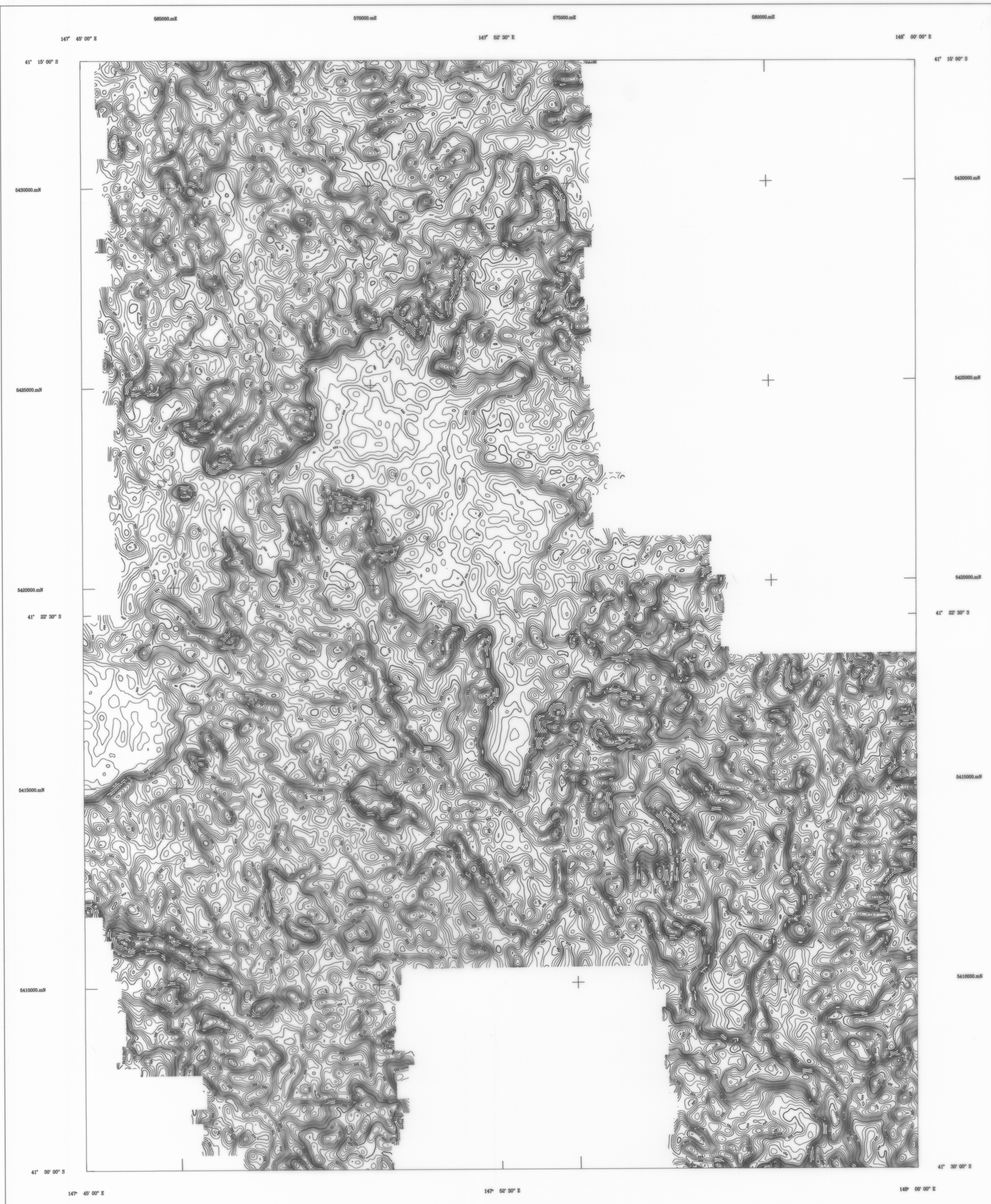


1:50,000 AIRBORNE GEOPHYSICAL SERIES

FINGAL SURVEY

TOTAL COUNT CONTOURS
MINERAL RESOURCES TASMANIA



AIRBORNE SURVEY EQUIPMENT

Aircraft	Bell 206 - 3 VII-PH1
Magnetometer	Geometrics G833 Helium Vapour
Magnetometer Resolution	0.01 nT
Magnetometer Sample Interval	0.20 seconds
Data Acquisition	Geo Instruments Model 2000
Data Recording	1.44 Mb floppy disks
Spectrometer	Explosionmeter G850
Crystal Size	18.0H downward array
Spectrometer Sample Interval	1.0 Seconds (approx 35 metres)
Flight Path Record	VHS Colour Video System
GPS Navigation System	Novatel GPS Receiver

AIRBORNE SURVEY SPECIFICATIONS

Flight Line Direction	090 - 270 degrees
Flight Line Separation	200 metres
The Line Direction	000 - 180 degrees
The Line Separation	400 metres
Terrain Clearance	60 metres (MTC)

TOTAL COUNT CONTOURS

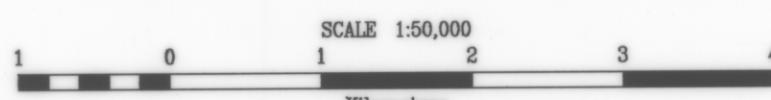
Data has been corrected for aircraft and cosmic backgrounds. Height corrected to a constant datum of 90 metres, minimum height of 20 and a maximum of 300 metres.

Grid Mesh 50 x 50 metres

For the purpose of contouring a 3rd average convolution filter has been applied to the grid. Contour Interval 25, 100, 500, 1000 cps

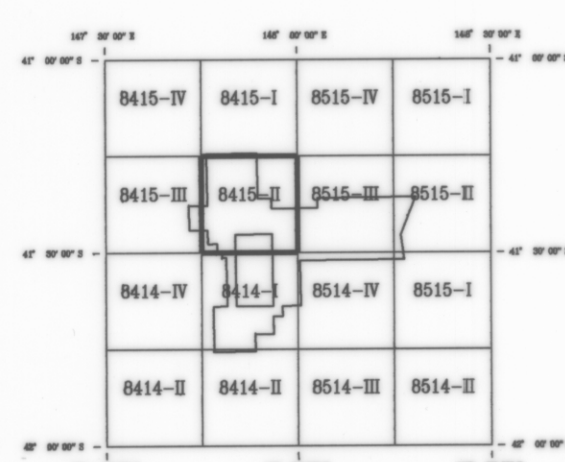
Fingal Airborne Geophysical Survey
 Tasmania Development and Resources
 Minerals Resources Tasmania
 Surveyed and compiled Geo Instruments Pty. Ltd
 Processed by Kevron Geophysics Pty. Ltd.
 October - November 1993

Crown Copyright Reserved
Project Supervision by Mineral Resources Tasmania



MAP GRID ZONE 55
SPHEROID : Australian National
PROJECTION : Universal Transverse Mercator

1:50,000 SHEET LOCATION



8415-II

