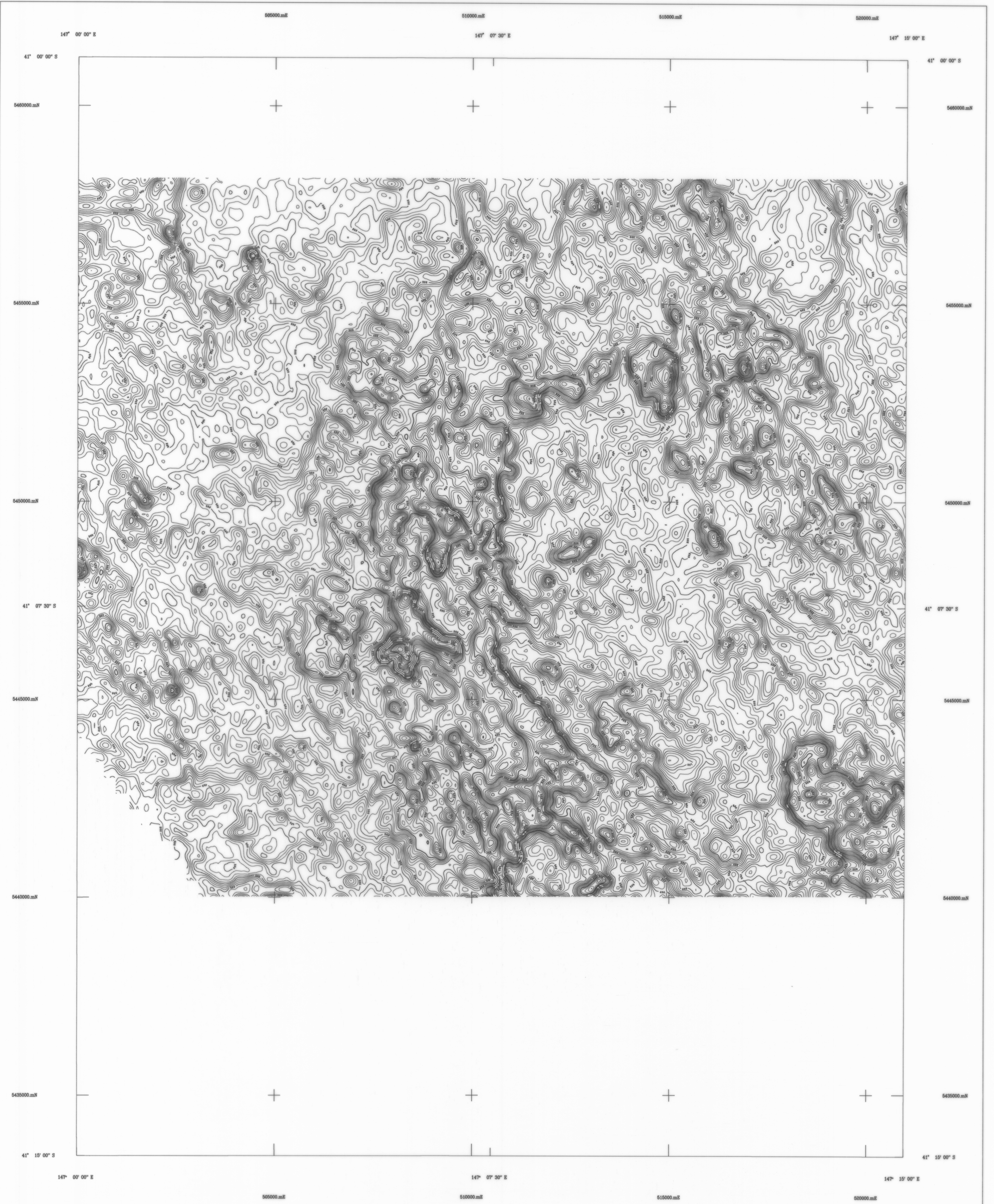


1:50,000 AIRBORNE GEOPHYSICAL SERIES

PIPERS RIVER SURVEY

TOTAL COUNT CONTOURS
MINERAL RESOURCES TASMANIA



AIRBORNE SURVEY EQUIPMENT

Aircraft: Bell 206 - 3 VH-FSH
 Magnetometer: Geometrics G633 Helium Vapour
 Magnetometer Sensitivity: 0.01 nT
 Magnetometer Sample Interval: 0.20 seconds
 Data Acquisition: Geo Instruments Model 2090
 Data Recording: 1.44 MB floppy disks
 Spectrometer: Exploration G8500
 Crystal Size: 18.00 downward array
 Spectrometer Sample Interval: 1.0 Seconds (approx 20 metres)
 Flight Path Record: VHS Colour Video System
 GPS Navigation System: Novatel GPS Receiver

AIRBORNE SURVEY SPECIFICATIONS

Flight Line Direction: 090 - 270 degrees
 Flight Line Separation: 200 metres
 Tie Line Direction: 000 - 180 degrees
 Tie Line Separation: 400 metres
 Terrain Clearance: 60 metres (MTC)

TOTAL COUNT CONTOURS

Data has been corrected for aircraft and cosmic backgrounds.
 Height corrected to a constant datum of 60 metres,
 minimum height of 20 and a maximum of 300 metres.

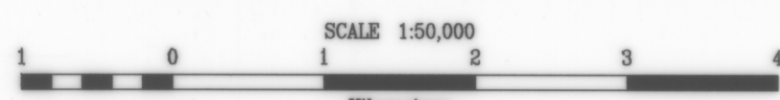
Grid Mesh: 50 x 50 metres

For the purposes of contouring a 3x3 average convolution filter has been applied to the grid.

Contour Interval: 25, 100, 500, 1000 cps

Pipers River Airborne Geophysical Survey
 Tasmania Development and Resources
 Minerals Resources Tasmania
 Surveyed and compiled Geo Instruments Pty. Ltd
 Processed by Kevron Geophysics Pty. Ltd.
 October - November 1993

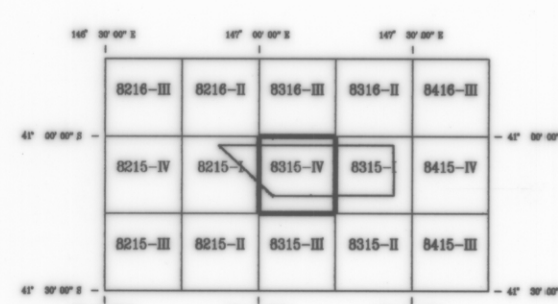
Crown Copyright Reserved
 Project Supervision by Mineral Resources Tasmania



MAP GRID ZONE 55

SPHEROID: Australian National
 PROJECTION: Universal Transverse Mercator

1:50,000 SHEET LOCATION



8315-IV