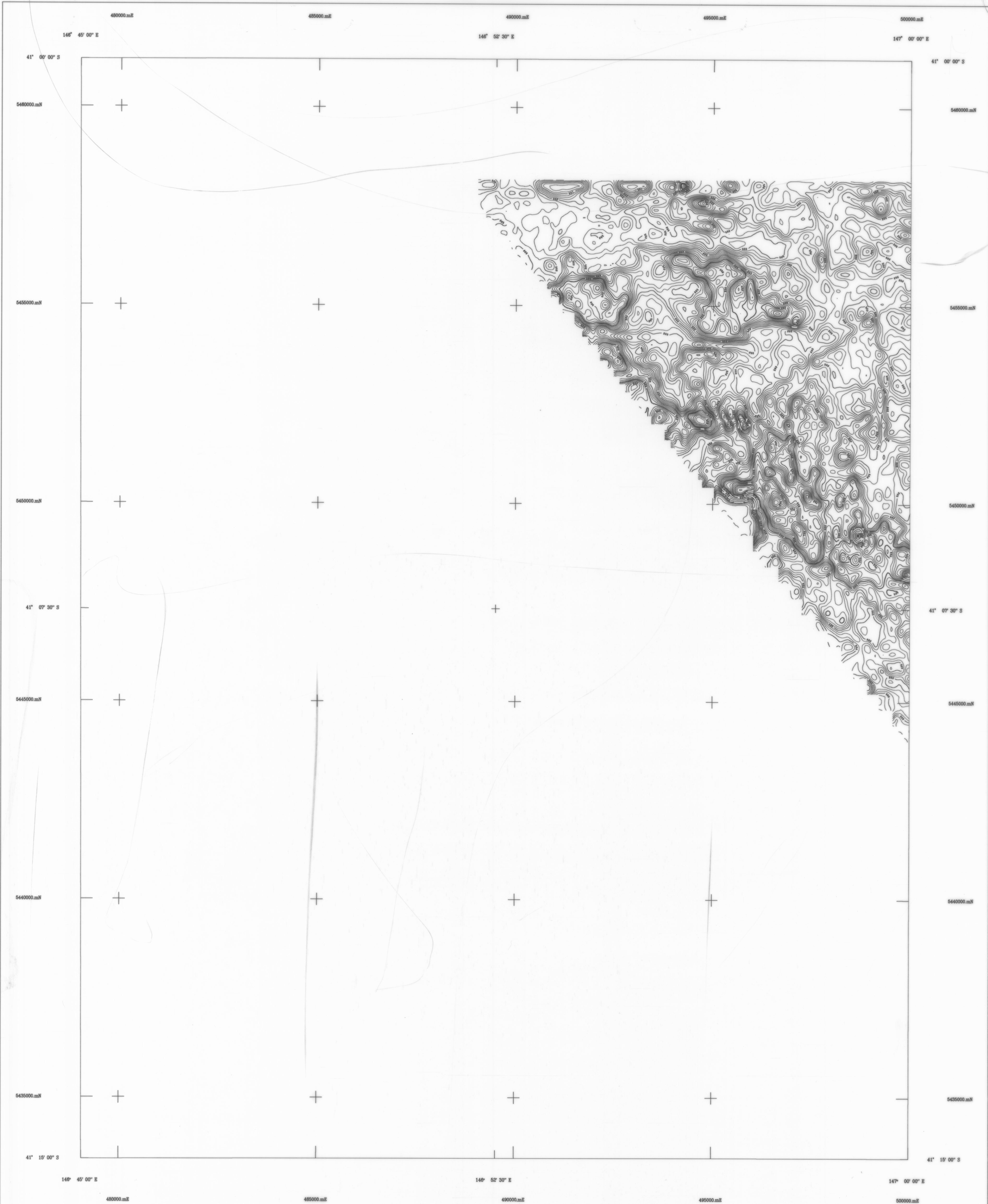


1:50,000 AIRBORNE GEOPHYSICAL SERIES

PIPERS RIVER SURVEY

TOTAL COUNT CONTOURS  
MINERAL RESOURCES TASMANIA



**AIRBORNE SURVEY EQUIPMENT**

Aircraft	Bell 206 - 3 HI-FH
Magnetometer	Geometrics G833 Helium Vapour
Magnetometer Resolution	0.01 nT
Magnetometer Sample Interval	0.20 seconds
Data Acquisition	Geo Instruments Model 2000
Data Recording	1.44 Mb floppy disks
Spectrometer	Exploremat G8820
Crystal Size	16.011 downward array
Spectrometer Sample Interval	1.0 Seconds (approx 35 metres)
Flight Path Record	VHS Colour Video System
GPS Navigation System	Novatel GPS Receiver

**AIRBORNE SURVEY SPECIFICATIONS**

Flight Line Direction	090 - 270 degrees
Flight Line Separation	200 metres
The Line Direction	000 - 180 degrees
The Line Separation	400 metres
Terrain Clearance	60 metres (MTC)

**TOTAL COUNT CONTOURS**

Data has been corrected for aircraft and cosmic backgrounds. Height corrected to a constant datum of 80 metres, minimum height of 20 and a maximum of 300 metres.

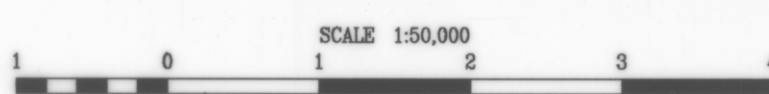
Grid Mesh 50 x 50 metres

For the purpose of contouring a 3x3 average convolution filter has been applied to the grid.

Contour Interval 25, 100, 500, 1000 cps

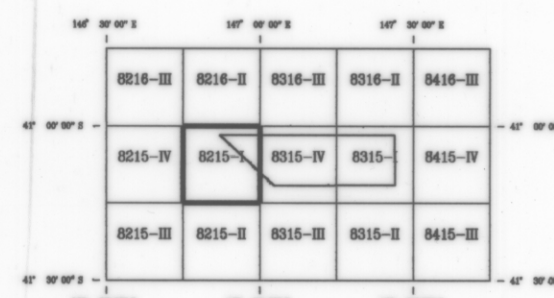
Pipers River Airborne Geophysical Survey  
Tasmania Development and Resources  
Minerals Resources Tasmania  
Surveyed and compiled Geo Instruments Pty. Ltd  
Processed by Kevron Geophysics Pty. Ltd.  
October - November 1993

Crown Copyright Reserved  
Project Supervision by Mineral Resources Tasmania



MAP GRID ZONE 55  
SPHEROID : Australian National  
PROJECTION : Universal Transverse Mercator

**1:50,000 SHEET LOCATION**



8215-1

