

5482E

8bc

5 cm

570000E 575000E 580000E 585000E 590000E

40°40'00"S

40°45'00"S

40°50'00"S

40°55'00"S

41°00'00"S

41°05'00"S

147°50'00"E

147°55'00"E

148°00'00"E

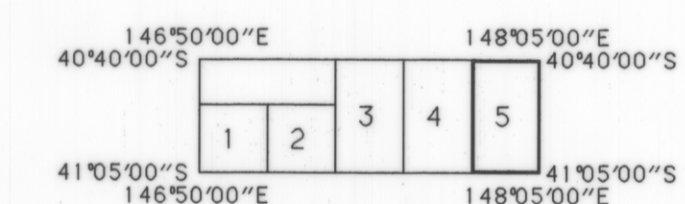
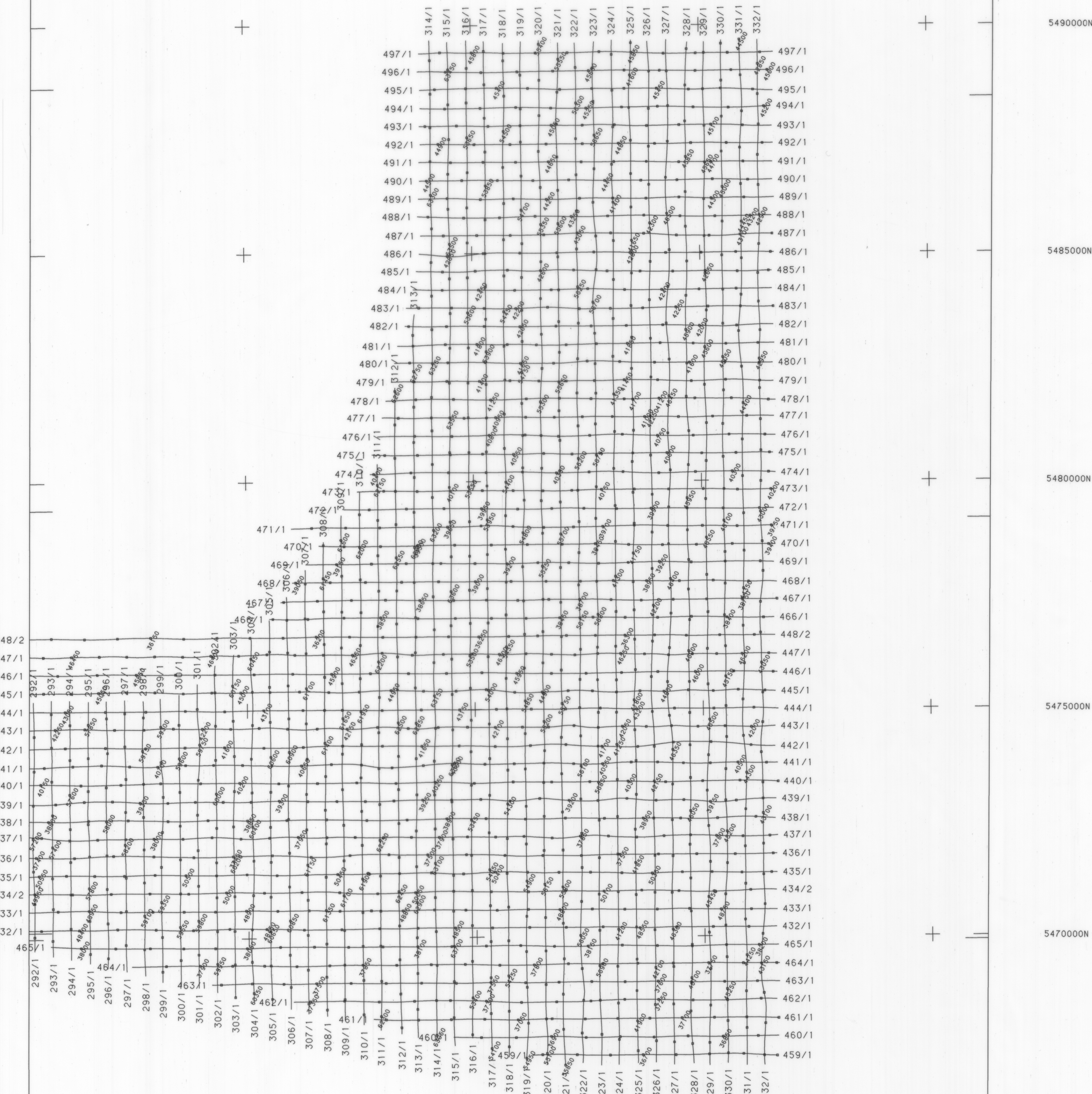
148°05'00"E

AIRBORNE SURVEY SPECIFICATIONS

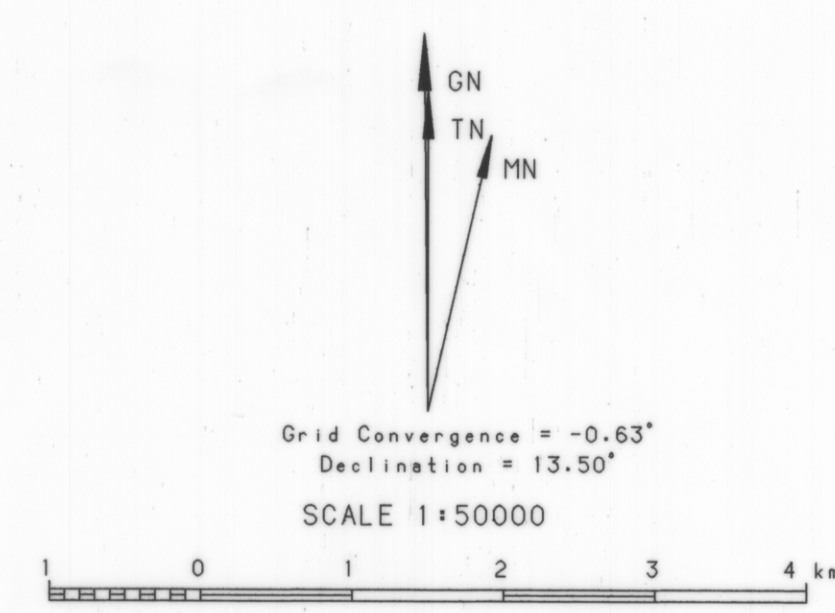
MAGNETOMETER : Cesium Vessou optical absorption
Sensitivity : 0.001 nT
RECORDING INTERVAL : 0.1 sec (approx 7 m sampling)
SPECTROMETER : at mean ground speed of 250 km/hour
Nuclear Data 256 channel ADC
Volume : 33.5 litre
TOTAL COUNT WINDOW : 0.4 - 3.00 MeV
URANIUM WINDOW : 1.35 - 1.57 MeV
THORIUM WINDOW : 1.63 - 1.88 MeV
RECORDING INTERVAL : 2.42 - 2.82 MeV
DATA RECORDING : 1.0 sec (approx 70 m sampling)
at mean ground speed of 250 km/hour
Scheerens INMOS acquisition system
Digital to magnetic tape
NOMINAL TERRAIN CLEARANCE : Both detectors to aircraft at 80 m
NOMINAL LINE SPACING : Traverse lines 400 m
FLIGHT PATH NAVIGATION : SERCEL NDS100 Real time UHF Differential
GPS system with SIMONS KEAROTT AM/AN 28
Doppler system with SPERRY C12 compass and
3514 vertical gyro
FLIGHT PATH RECORD : XY coordinates computed from WGS84 lat/long
coordinates recorded by SERCEL NDS100 Real
time UHF Differential GPS system

FLIGHT PATH

Grid notation refers to Australian Map Grid Zone 55
Navigation file 32768



CROWN COPYRIGHT RESERVED



JOB NO : 1-451
Surveyed by GEOTERREX PTY LTD - November 1993
Compiled by GEOTERREX PTY LTD, SYDNEY
Processed by GEOTERREX PTY LTD, SYDNEY

MINERAL RESOURCES TASMANIA
WEYMOUTH-TOMAHAWK ALL LINES
FLIGHT PATH
LAUNCESTON SK55-4
SHEET 5 OF 5

CREATED : MP
CHECKED : MS
DRAWING NO :
DATE : 21-JAN-1994