

5483A

8bt

5 cm

490000E 495000E 500000E 505000E

40°50'00"S

40°55'00"S

41°00'00"S

41°05'00"S

AIRBORNE SURVEY SPECIFICATIONS

MAGNETOMETER : Cesium Vapour optical absorption
Sensitivity : 0.001 nT

RECORDING INTERVAL : 0.1 sec (approx 7 m sampling)
at mean ground speed of 250 km/hour

SPECTROMETER : Nuclear Data 256 channel ADC
Volume : 33.5 litres

TOTAL COUNT WINDOW : 0.4 - 3.00 MeV

POTASSIUM WINDOW : 1.35 - 1.57 MeV

URANIUM WINDOW : 1.63 - 1.89 MeV

THORIUM WINDOW : 2.42 - 2.82 MeV

RECORDING INTERVAL : 1.0 sec (approx 70 m sampling)
at mean ground speed of 250 km/hour

DATA RECORDING : Geotrex MADACS acquisition system
Digital to magnetic tape

NOMINAL TERRAIN CLEARANCE : Both detectors in aircraft at 80 m

NOMINAL LINE SPACING : Traverse lines 400 m
Tie lines 400 m

FLIGHT PATH NAVIGATION : SERCEL NDS100 Real time UHF Differential
GPS system with SINGER KEARFOIT AN/ASN 128
Doppler system with SPERRY C12 compass and
VG14 vertical gyro

FLIGHT PATH RECORD : XY coordinates computed from WGS84 lat/long
coordinates recorded by SERCEL NDS100 Real
time UHF Differential GPS system

5475000N

5470000N

5465000N

5460000N

5455000N

RESIDUAL MAGNETIC PROFILES

Grid notation refers to Australian Map Grid Zone 55

Magnetics : Diurnal removed, tie line levelled
1990 model (updated for secular
variation to November 1993) removed,
datum 2000 nT added

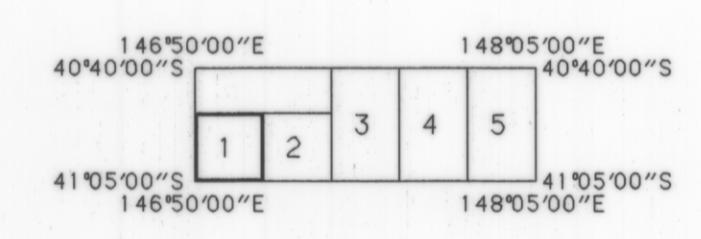
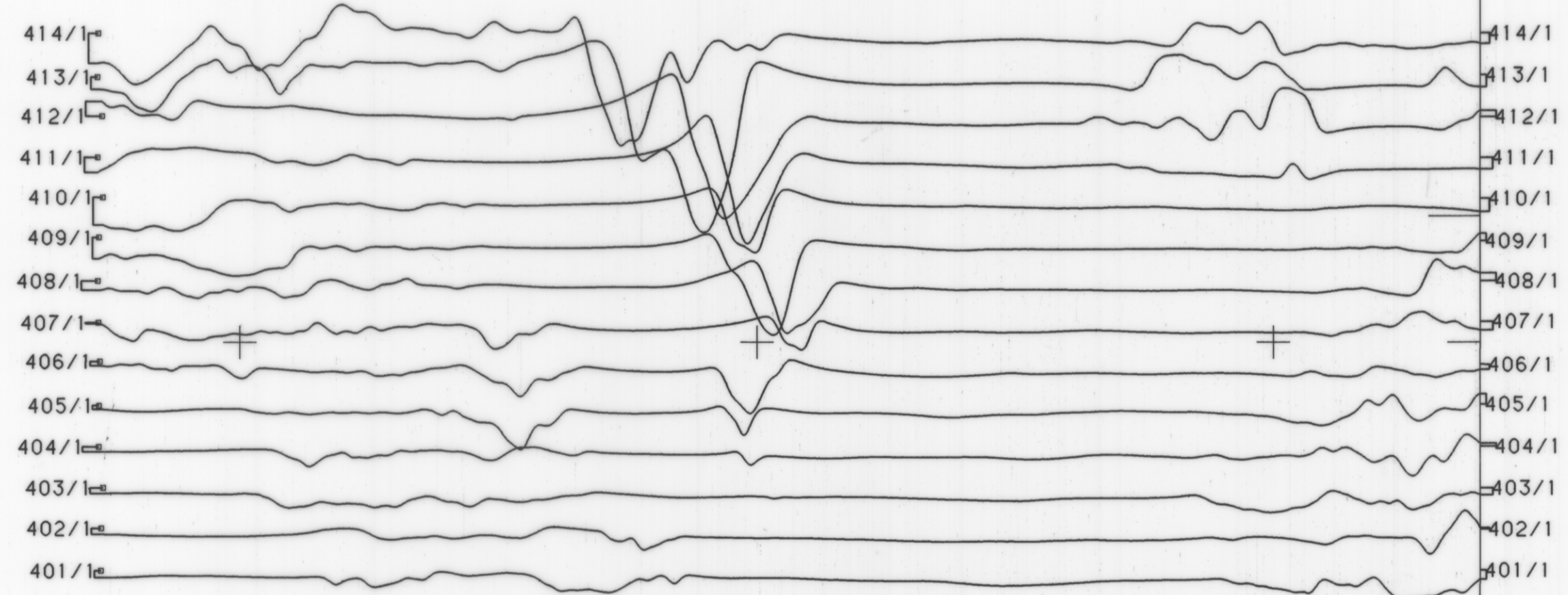
Total Field : 61672 nT (at 41°00'00S, 147°20'00E)

Inclination : 71 degrees S

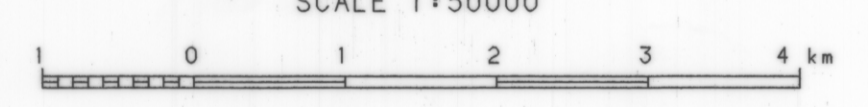
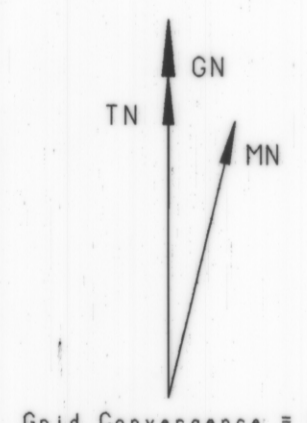
Declination : 13.5 degrees E

Vertical Scale : 200 nT/cm

Base Value : 2000 nT



CROWN COPYRIGHT RESERVED



JOB NO : 1-451
Surveyed by GEOTERREX PTY LTD : November 1993
Compiled by GEOTERREX PTY LTD, SYDNEY
Processed by GEOTERREX PTY LTD, SYDNEY

MINERAL RESOURCES TASMANIA
WEYMOUTH-TOMAHAWK EW LINES
RESIDUAL MAGNETIC PROFILES
LAUNCESTON SK55-4
SHEET 1 OF 5

CREATED : MP DRAWING NO :
CHECKED : HS DATE : 27-JAN-1994

146°50'00"E 146°55'00"E 147°00'00"E 147°05'00"E

5483A