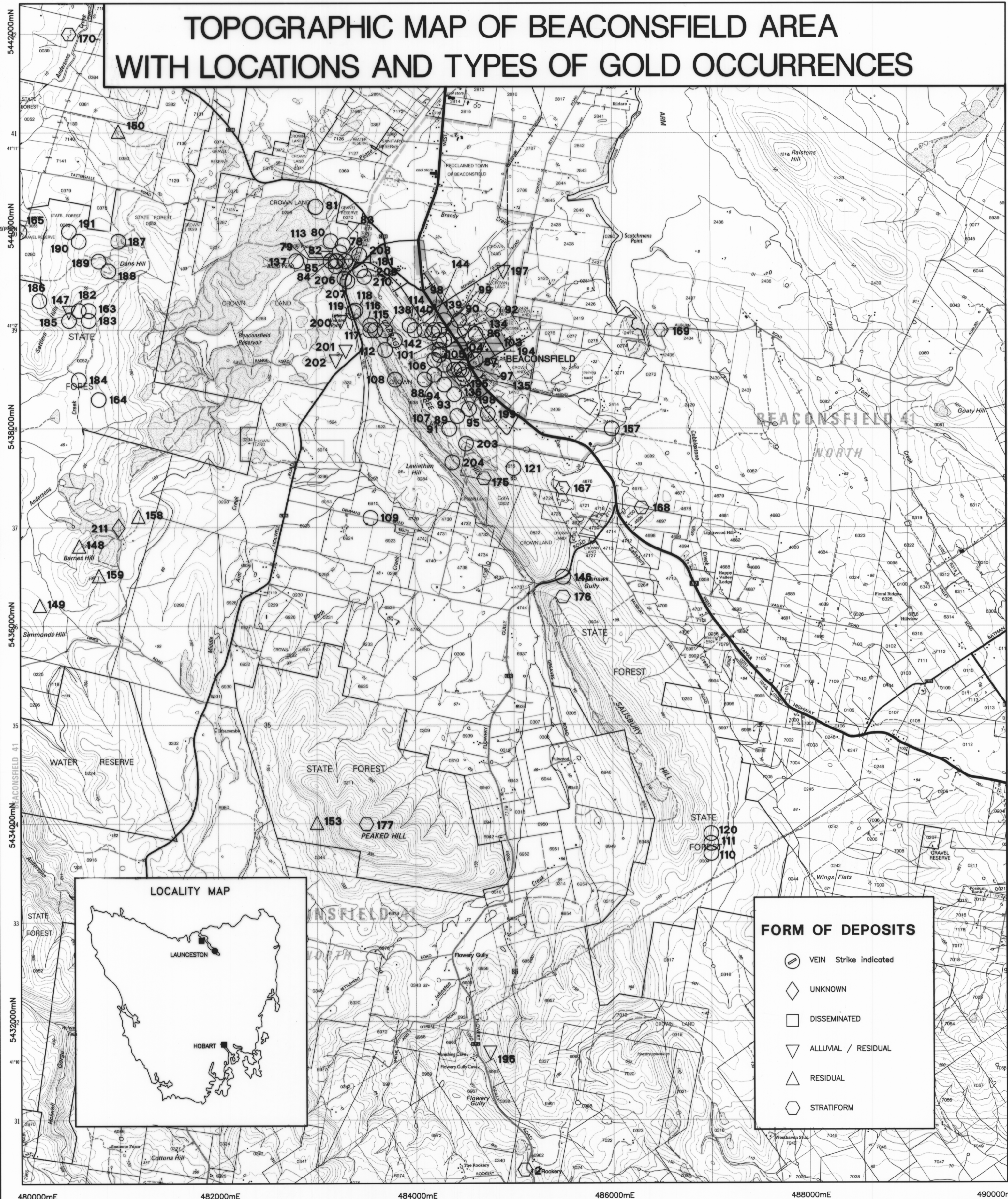


INDEX OF DEPOSITS

- 2 FLOWERY GULLY
- 78 BRANDY CK (NEW)
- 79 BRANDY CK (OLD)
- 80 OLD SHAFT
- 81 GOLDEN HORSESHOE
- 82 EXCELSIOR ; BRANDY CK
- 83 DUNDEE ; BRANDY CK
- 84 LONDON ADIT ; BRANDY CK
- 85 PEASE'S SHAFT ; BRANDY CK
- 86 EAST TASMANIA
- 87 DALLY'S UNITED
- 88 BONANZA;CORIO
- 89 UPPER COSMOPOLITAN
- 90 DUKE OF EDINBURGH
- 91 KOHINOOR
- 92 STANLEY
- 93 LEVIATHAN
- 94 STAR
- 95 HAEMATITE SHAFT
- 97 LEFROY
- 98 OPHIR
- 99 TRESIZES
- 100 ORCHARDS
- 101 BUTTONS
- 102 QUEENS
- 103 DENMARK
- 104 BALLARAT
- 105 FLORENCE NIGHTINGALE;TASMANIA
- 106 GOLDEN GATE;TASMANIA
- 107 PHOENIX ;TASMANIA
- 108 BRITANNIA
- 109 EUREKA
- 110 SALISBURY
- 111 VICTORIA
- 112 NEW PROVIDENCE
- 113 NORTH TASMANIA
- 114 OLIVE BRANCH ADIT
- 115 MOONLIGHT-CUM-WONDER
- 116 LITTLE WONDER ;M-C-W
- 117 OLIVE BRANCH ;M-C-W
- 118 WHIM
- 119 GARFIELD
- 120 DUCHESS OF YORK; GLADSTONE; SANTA CLAUS
- 121 RISING SUN
- 134 BEACONSFIELD DEEP LEAD
- 135 GRUBBS; TASMANIA M
- 136 HARTS; TASMANIA; MAIN SHAFT
- 137 JOHNSON & KNIGHT; KNIGHT & JOHNSON
- 138 MOONLIGHT
- 139 RICHARDS
- 140 SUTTONS
- 141 SWIFTS LIMONITE
- 142 WEST TASMANIA; AMALGAMATED; M-C-W
- 144 TASMANIA OPHIR
- 146 KING VICTOR
- 147 ANDERSONS CK
- 148 BARNES HILL A
- 149 SIMMONDS HILL
- 150 LEONARDSBURG
- 153 PEAKED HILL (IRON); ILFRACOMBE
- 157 UNNAMED
- 158 BARNES HILL B
- 159 BARNES HILL C
- 163 ANDERSONS CK A
- 164 ANDERSONS CK B
- 165 ANDERSONS CK C
- 167 UNNAMED
- 168 UNNAMED
- 169 UNNAMED
- 170 UNNAMED
- 175 CABBAGE TREE HILL
- 176 SALISBURY HILL (SILICA)
- 177 PEAKED HILL (SILICA)
- 181 BRANDY CK ALLUVIAL
- 182 MAIN Q
- 183 TERRAZO Q
- 184 GREENSTONE Q
- 185 CONDORS PR
- 186 JACKSONS PR
- 187 HILL Q.1
- 188 HILL Q.2
- 189 HILL Q.3
- 190 HILL Q.4
- 191 HILL Q.5
- 194 NEW MAIN
- 195 MAIN ADIT
- 196 UNNAMED
- 197 UNNAMED
- 198 UNNAMED
- 199 LOWER COSMOPOLITAN
- 200 UNNAMED
- 201 UNNAMED
- 202 UNNAMED
- 203 UNNAMED
- 204 UNNAMED
- 206 UNNAMED
- 207 UNNAMED
- 208 UNNAMED
- 209 UNNAMED
- 210 UNNAMED
- 211 ANDERSONS CK

TOPOGRAPHIC MAP OF BEACONSFIELD AREA WITH LOCATIONS AND TYPES OF GOLD OCCURRENCES



FORM OF DEPOSITS

- VEIN Strike indicated
- UNKNOWN
- DISSEMINATED
- ALLUVIAL / RESIDUAL
- RESIDUAL
- STRATIFORM