




5 cm

# TOPOGRAPHIC MAP OF GLADSTONE AREA WITH LOCATIONS AND TYPES OF GOLD OCCURRENCES

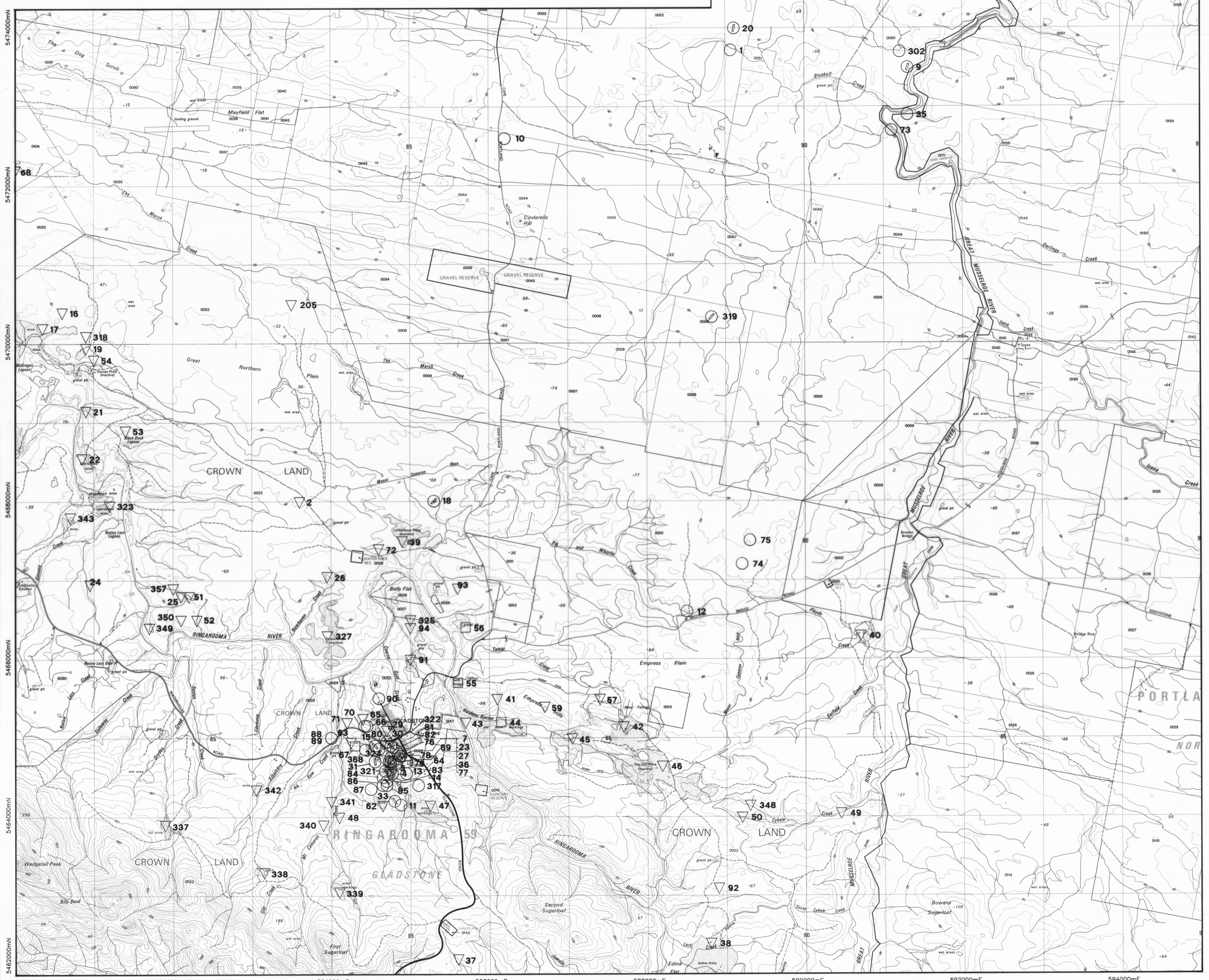
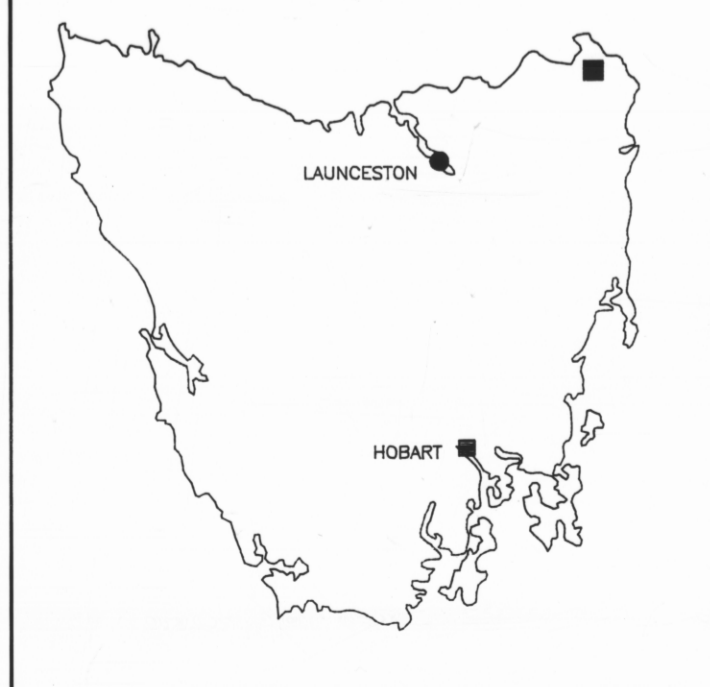
## INDEX OF DEPOSITS

- |                               |                                 |
|-------------------------------|---------------------------------|
| 1 BLUE BELL                   | 64 FLY BY NIGHT CK. B           |
| 2 BELLS SHAFT                 | 65 GRAND CENTRE                 |
| 4 DESKFORO SECTION            | 66 UNNAMED                      |
| 5 FLEMINGS REEF               | 67 UNNAMED                      |
| 7 GOLDEN AGE A                | 68 BRAITHWAITES                 |
| 8 GRAND FLEAUR                | 69 UNNAMED                      |
| 9 BIG MUSSELROE               | 70 UNNAMED                      |
| 10 JOHN FOSTER LOT 83         | 71 UNNAMED                      |
| 11 LADY TASMAN                | 72 MALLISON'S; MALLINSON'S      |
| 12 MC GOWAN'S                 | 73 UNNAMED                      |
| 13 MIDLOTHIAN                 | 74 UNNAMED                      |
| 14 NORTH ROYAL TASMAN         | 75 UNNAMED                      |
| 15 NORTH TASMAN #1            | 76 5TH ROYAL STANDARD B         |
| 16 BELTZ                      | 77 UNNAMED                      |
| 17 MACGREGOR                  | 78 UNNAMED                      |
| 18 POPES                      | 79 UNNAMED                      |
| 19 CANARY DORSET              | 80 O'HALLORANS B                |
| 20 PRINCE IMPERIAL            | 81 UNNAMED                      |
| 21 RICHARDSONS                | 82 UNNAMED                      |
| 22 BLACK DUCK                 | 83 UNNAMED                      |
| 23 ROYAL TASMAN #1; CHAFFEY'S | 84 UNNAMED                      |
| 24 NATIVE LASS                | 85 UNNAMED                      |
| 25 DOONE                      | 86 BIRKETT'S & MOORE'S SHAFT    |
| 26 NEWHAVEN                   | 87 UNNAMED                      |
| 27 ROYAL TASMAN 2             | 88 ML 10919/M                   |
| 29 NORTH ROYAL STANDARD       | 89 UNNAMED                      |
| 30 FLEMINGS WOLFRAM LODE      | 90 UNNAMED                      |
| 31 WEST TASMAN                | 91 GALLOWAYS; BELL'S; OGILVIE'S |
| 33 SOUTH ROYAL MINT           | 92 MOORES                       |
| 35 ROSS'S REEF ML10808/M?     | 93 MARY                         |
| 36 VICTORY                    | 94 MORRISSEYS                   |
| 37 UNNAMED                    | 205 BROWNS                      |
| 38 DAWES                      | 302 BUTLERS                     |
| 39 LOCHARBER; LOCHABER        | 317 O'HALLORANS A               |
| 40 ELIZABETH                  | 318 TAYLOR                      |
| 41 EMPRESS                    | 319 PORTLAND; BRISBANE          |
| 42 STAR HILL; LAWRY           | 321 ROYAL MINT                  |
| 43 NEW ESK HARDEN'S RAVINE    | 322 ROYAL STANDARD              |
| 44 UNNAMED                    | 323 VULCAN                      |
| 45 EUREKA                     | 324 5TH ROYAL STANDARD A        |
| 46 GARFIELD                   | 325 WARES PROSPECTS             |
| 47 FLY BY NIGHT               | 327 SCOTIA                      |
| 48 MT CAMERON CK              | 337 UNNAMED                     |
| 49 TRACEYS                    | 338 UNNAMED                     |
| 50 CYBELE                     | 339 UNNAMED                     |
| 51 RICHARDS & MURRAY          | 340 UNNAMED                     |
| 52 P CROSS CROSS P            | 341 UNNAMED                     |
| 53 WAINWRIGHT'S               | 342 UNNAMED                     |
| 54 ROY                        | 343 UNNAMED                     |
| 55 MURRAY'S TIN LODE          | 344 UNNAMED                     |
| 56 BRIDGE                     | 348 WATTS (EAST)                |
| 57 LAWRY                      | 349 WATTS                       |
| 59 TAMAR                      | 350 UNNAMED                     |
| 62 UNNAMED                    | 351 UNNAMED                     |
| 63 FLY BY NIGHT CK. A         | 357 UNNAMED                     |
|                               | 358 UNNAMED                     |

## FORM OF DEPOSITS

-  VEIN Strike indicated
-  DISSEMINATED
-  ALLUVIAL / RESIDUAL

## LOCALITY MAP



5488D  
889