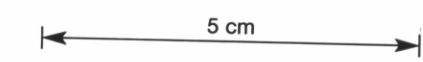


INCOMPLETE
DATA
MAYBE
AMENDED
MAY 94

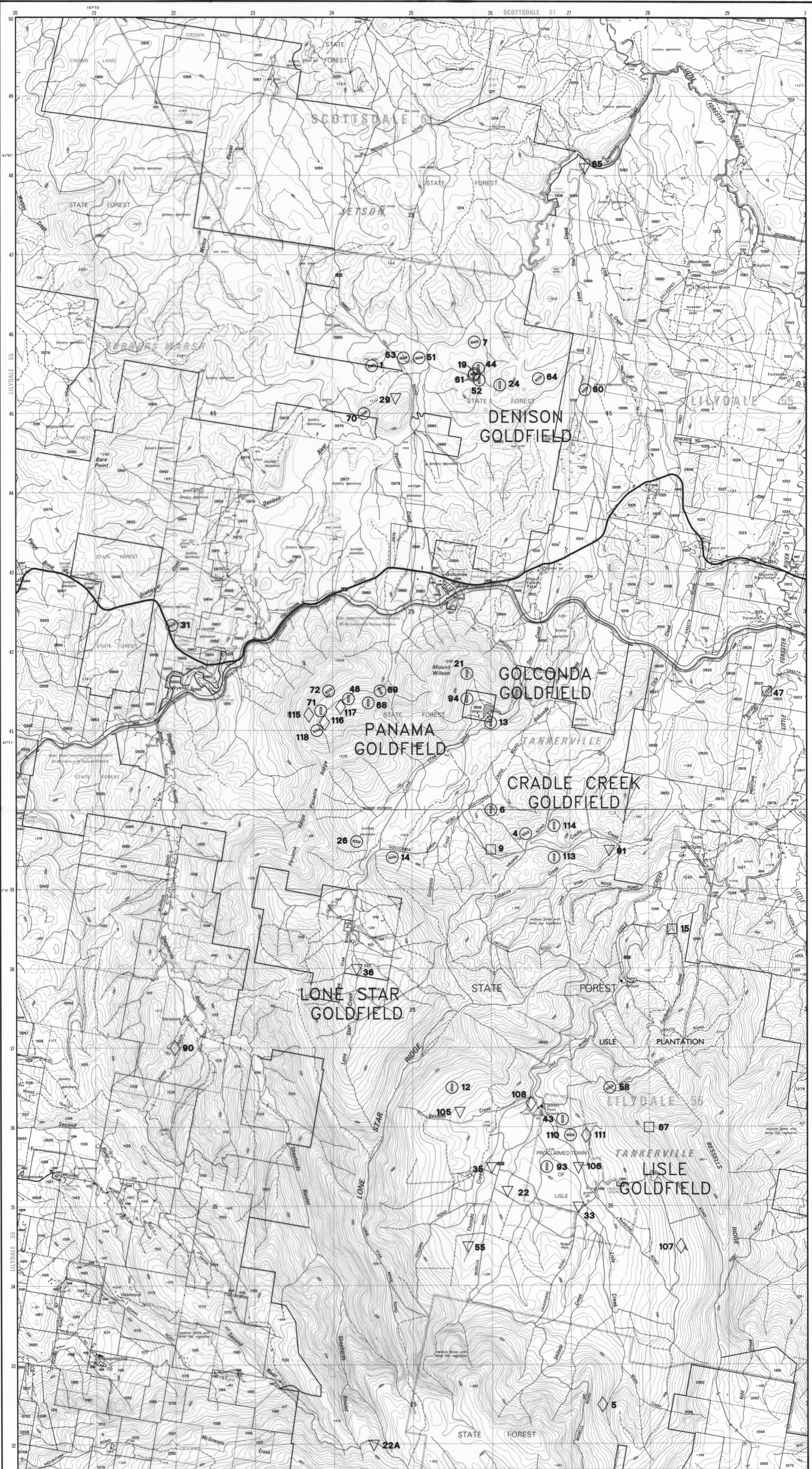
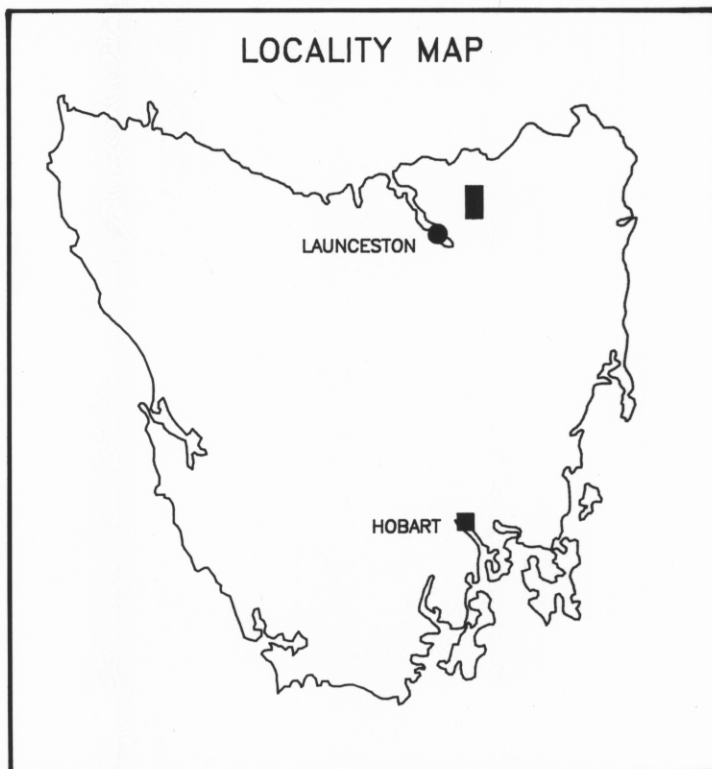


INDEX OF DEPOSITS

- 1 ALACRITY
- 4 BESSELLS RWD
- 5 LISLE-STH
- 6 BROCK PROSPECT
- 7 BROOKLYN
- 9 COTTRELL - DORMER PROSPECT
- 12 DUNNS ADIT
- 13 ENTERPRISE :DEM
- 14 FAIRTHORNE PROSPECT
- 15 FALKNER CREEK
- 19 GLOBE (NTH WKS)
- 21 GOLDEN CREST
- 22 HAYE'S LEASES ;STONEY CK
- 22A NTH OF MT ARTHUR
- 24 JIM'S COSTEAN
- 26 KELLY PROSPECT, DORMERS SHAFT
- 29 LADY HAMILTON
- 31 LEBRINA MINE
- 33 LISLE CREEK WORKINGS
- 35 LISLE HYDRAULIC GOLD MINES S
- 36 LONE STAR CREEK
- 43 NEW BONANZA
- 44 NORTHERN GLOBE
- 46 GREAT PANAMA (N); SYDNEY & PANAMA TUNNEL
- 47 PARTRIDGE CK
- 51 SIR WILLIAM DENISON
- 52 SOUTHERN GLOBE
- 53 STAR
- 55 THOMAS CREEK
- 58 WATTS PROSPECT
- 60 WEST WANGATA
- 61 WESTERN GLOBE
- 64 WYANGATA;WANGATA
- 65 JCT OF LISLE & LONE STAR CKS;BH'S
- 67 HILL RANGE EAST OF NEW BONANZA
- 68 JACK'S #1; ML 1346-G
- 69 JACK'S #2; ML 1492-G
- 70 SECTION 1856-G PANAMA
- 71 GOLDEN PYRAMID (CENTRAL); ML1623-G
- 72 EVERETT'S TUNNEL; ML 1516-G
- 90 KELP & BOULTBEE'S
- 91 CRADLE CK GOLDFIELD
- 93 LORETTA
- 94 QUEENSLANDER
- 105 BESSELLS CK
- 106 COX CK
- 107 ML 78 PG
- 108 DUNNS
- 110 DONNELLY'S ADITS
- 111 SEARLES ADITS
- 113 TITMUS
- 114 EASTMAN
- 115 GREAT PANAMA
- 116 GOLDEN PANAMA
- 117 WEST PANAMA
- 118 WILSON & SYMONDS REEF

FORM OF DEPOSITS

- VEIN Strike indicated
- UNKNOWN
- DISSEMINATED
- ALLUVIAL / RESIDUAL



LISLE-GOLCONDA-DENISON GOLDFIELDS