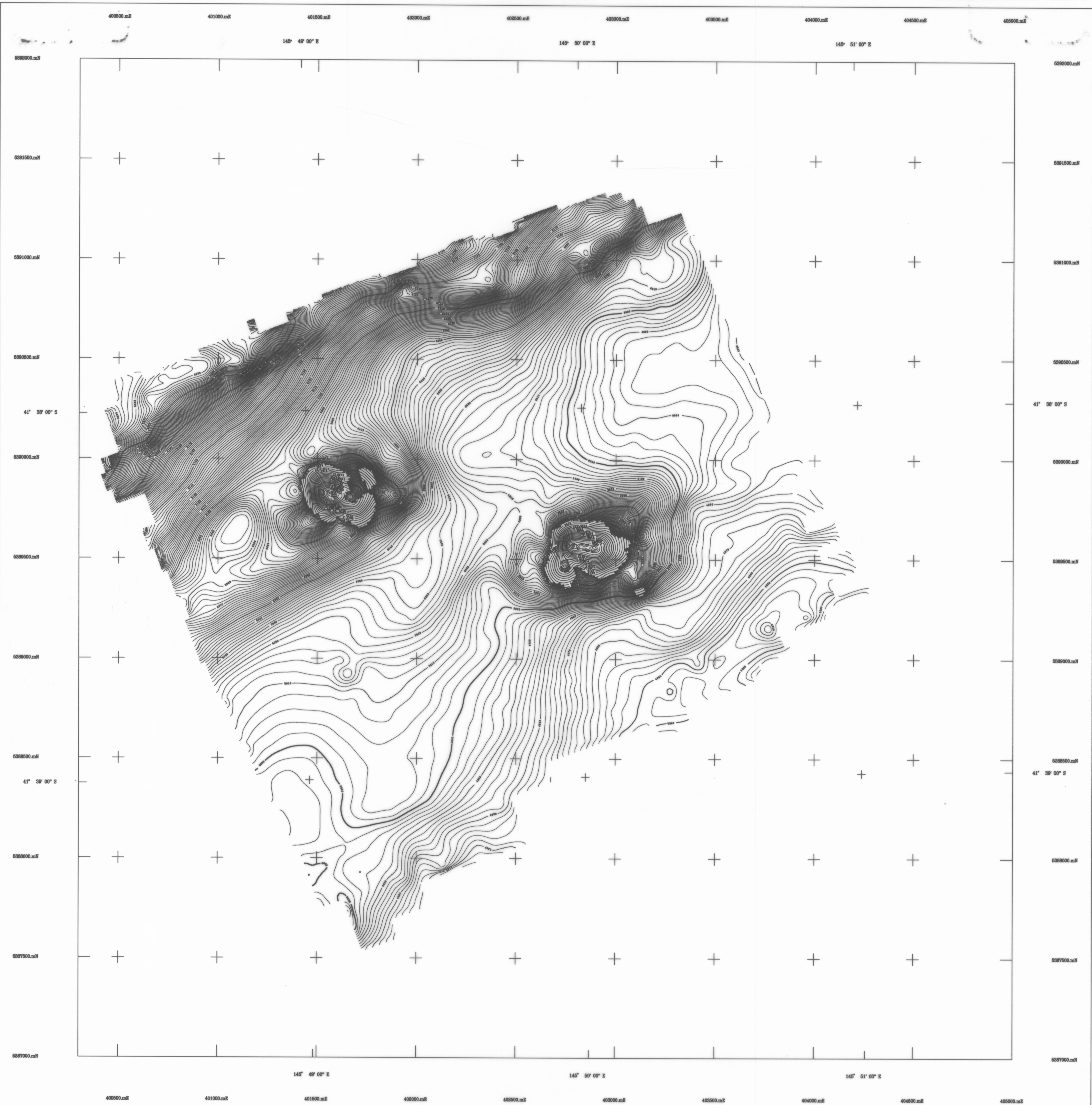


1:10,000 AIRBORNE GEOPHYSICAL SERIES

ANIO CREEK SURVEY

TOTAL MAGNETIC INTENSITY CONTOURS
MINERAL RESOURCES TASMANIA



AIRBORNE SURVEY EQUIPMENT

Aircraft
Magnetometer
Magnetometer Resolution
Magnetometer Sample Interval
Data Acquisition
Data Recording
Spectrometer
Crystal Size
Spectrometer Sample Interval
Flight Path Record
GPS Navigation System

Bell 206 - 3 VII-FRH
Geometrics G853 Helium Vapour
0.25 nT
0.20 seconds
Geo Instruments Model 5000
1.44 Mb floppy disk
Exploration G820
16 bit downwind array
1.0 Seconds (approx 35 metres)
VHS Colour Video System
Novatel GPS Receiver

AIRBORNE SURVEY SPECIFICATIONS

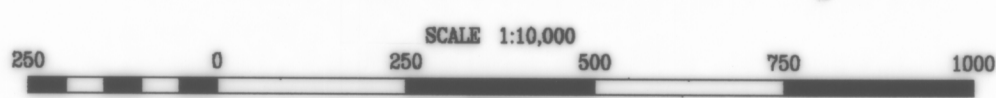
Flight Line Direction 090 - 270 degrees
Flight Line Separation 200 metres
Tie Line Direction 000 - 180 degrees
Tie Line Separation 400 metres
Terrain Clearance 60 metres (MTC)

TOTAL MAGNETIC INTENSITY CONTOURS

Diurnal variations removed
IGRF(1990) updated to 1993.8 removed
Average survey base station value and a constant of 5000 nT added to datum
Grid zone 50 x 50 metres
Contour interval 2, 10, 50, 250, 1000 nT

Anio Creek Airborne Geophysical Survey
Tasmania Development and Resources
Minerals Resources Tasmania
Surveyed and compiled Geo Instruments Pty. Ltd
Processed by Kevron Geophysics Pty. Ltd.
October - November 1993

Crown Copyright Reserved
Project Supervision by Mineral Resources Tasmania



SCALE 1:10,000
MAP GRID ZONE 55
SPHEROID : Australian National
PROJECTION : Universal Transverse Mercator

