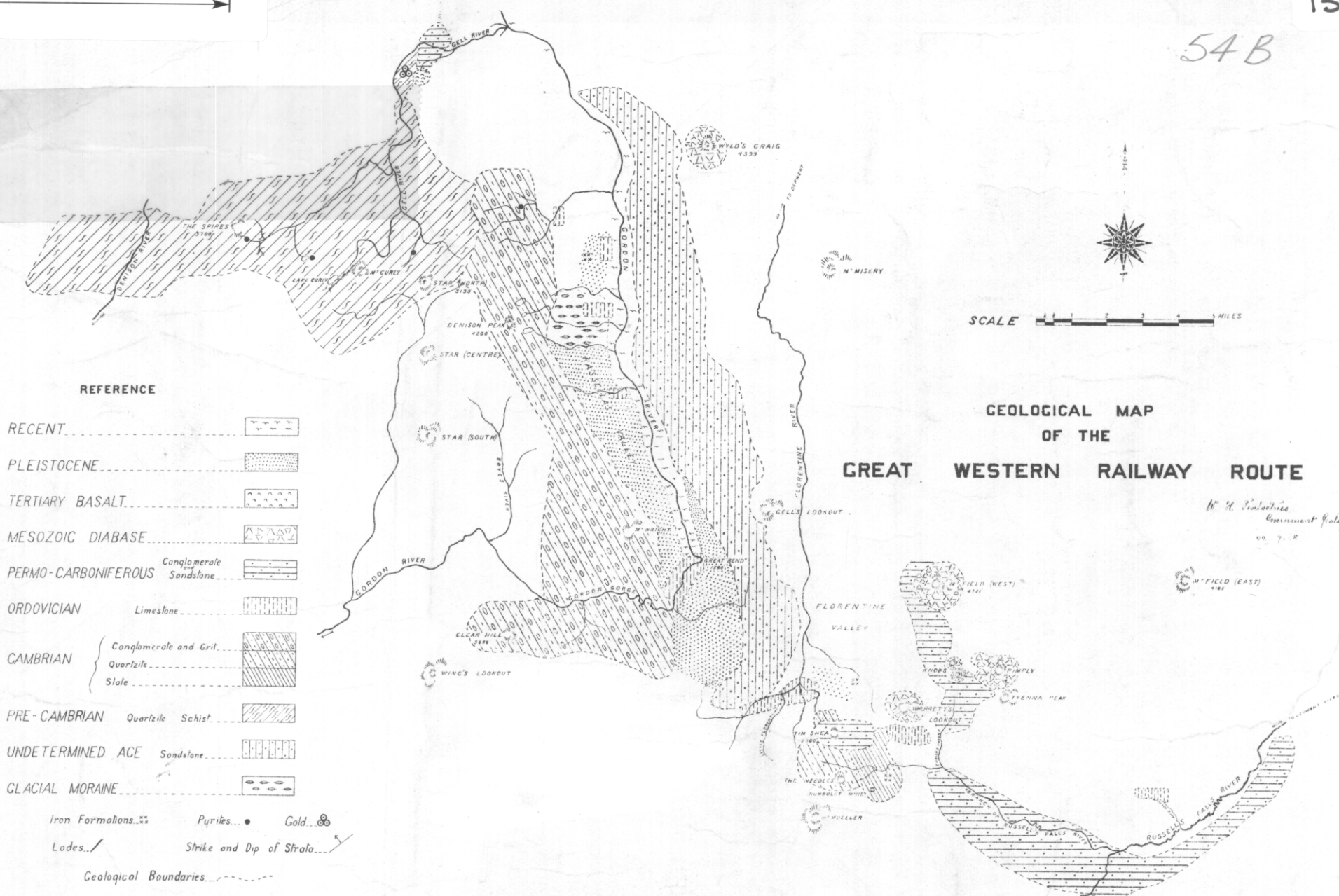


54 B

5 cm



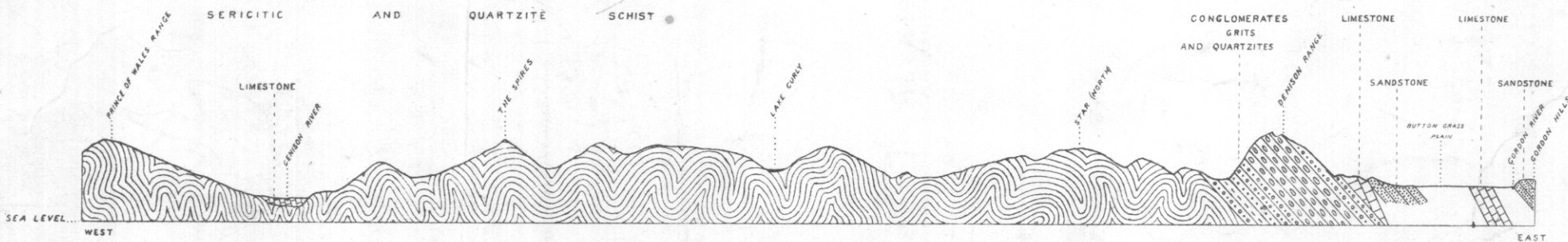
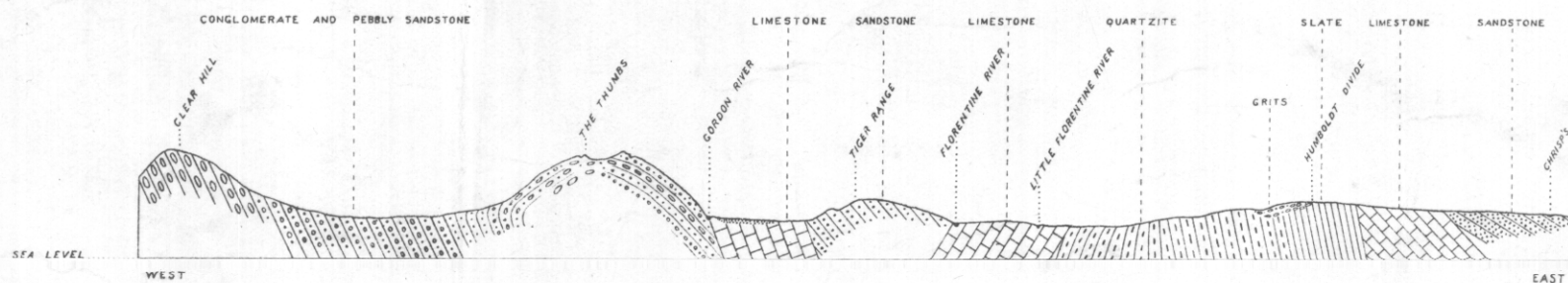
SCALE 1 2 3 4 5 MILES

**GEOLOGICAL MAP OF THE GREAT WESTERN RAILWAY ROUTE**

W. H. Finlayson, Government Geologist, 1908

Photo Aligned by John Vail, Government Printer, Hobart, Tasmania

54 C



**GENERALIZED SECTIONS**

Horizontal 1 2 3 4 5 MILES  
Vertical 100 200 300 400 500 FEET

W. H. Finlayson, Government Geologist, 1908

Photo Aligned by John Vail, Government Printer, Hobart, Tasmania