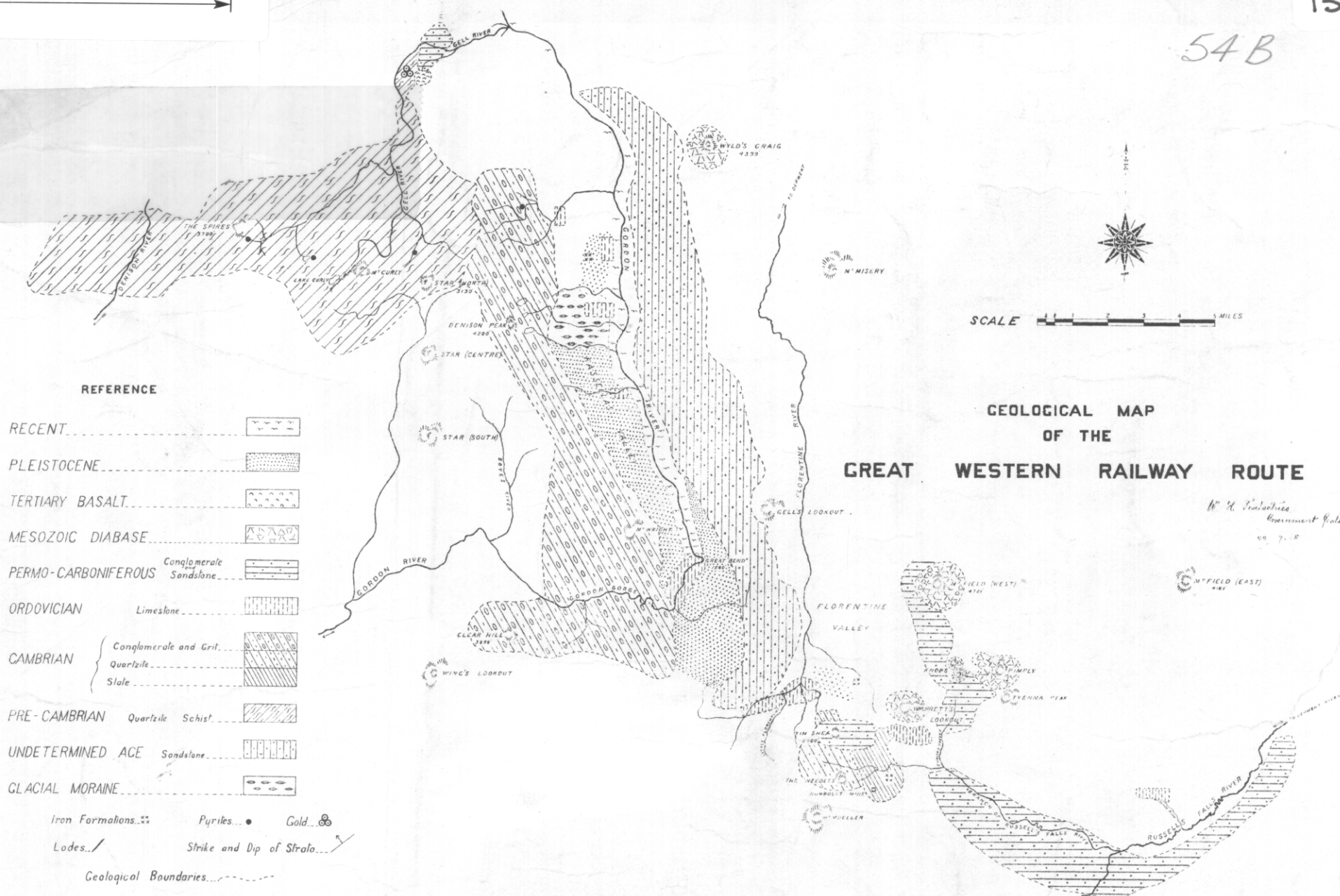


54 B

5 cm

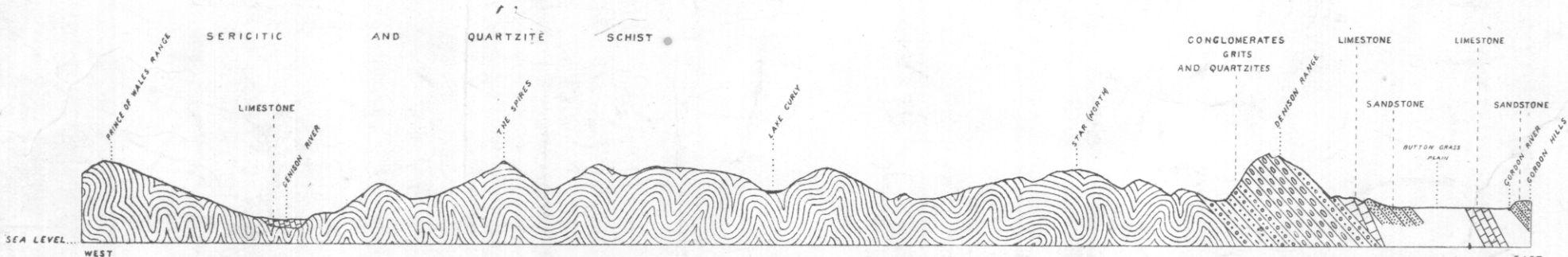
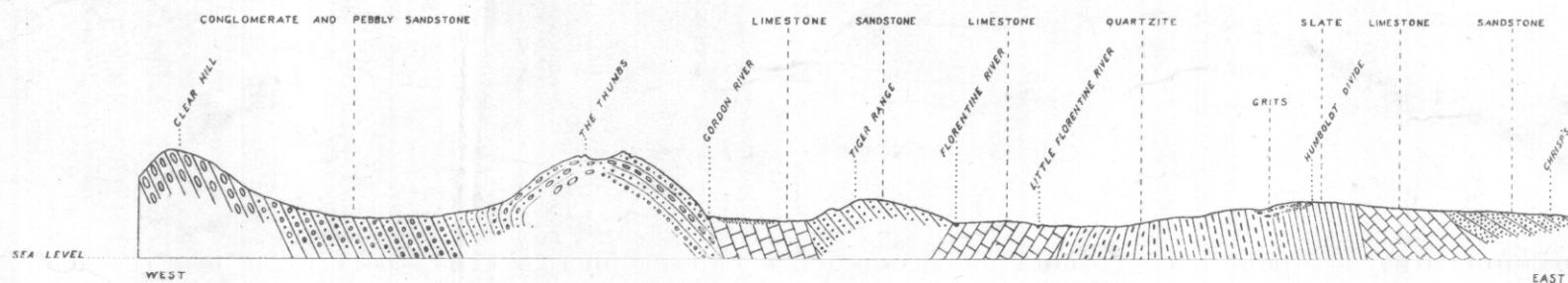


GEOLOGICAL MAP OF THE GREAT WESTERN RAILWAY ROUTE

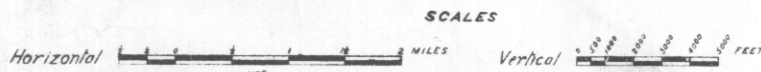
W. H. Finlayson
Government Geologist
1878

Photo Aligned by John Vail Government Printer Hobart Tasmania

54 C



GENERALIZED SECTIONS

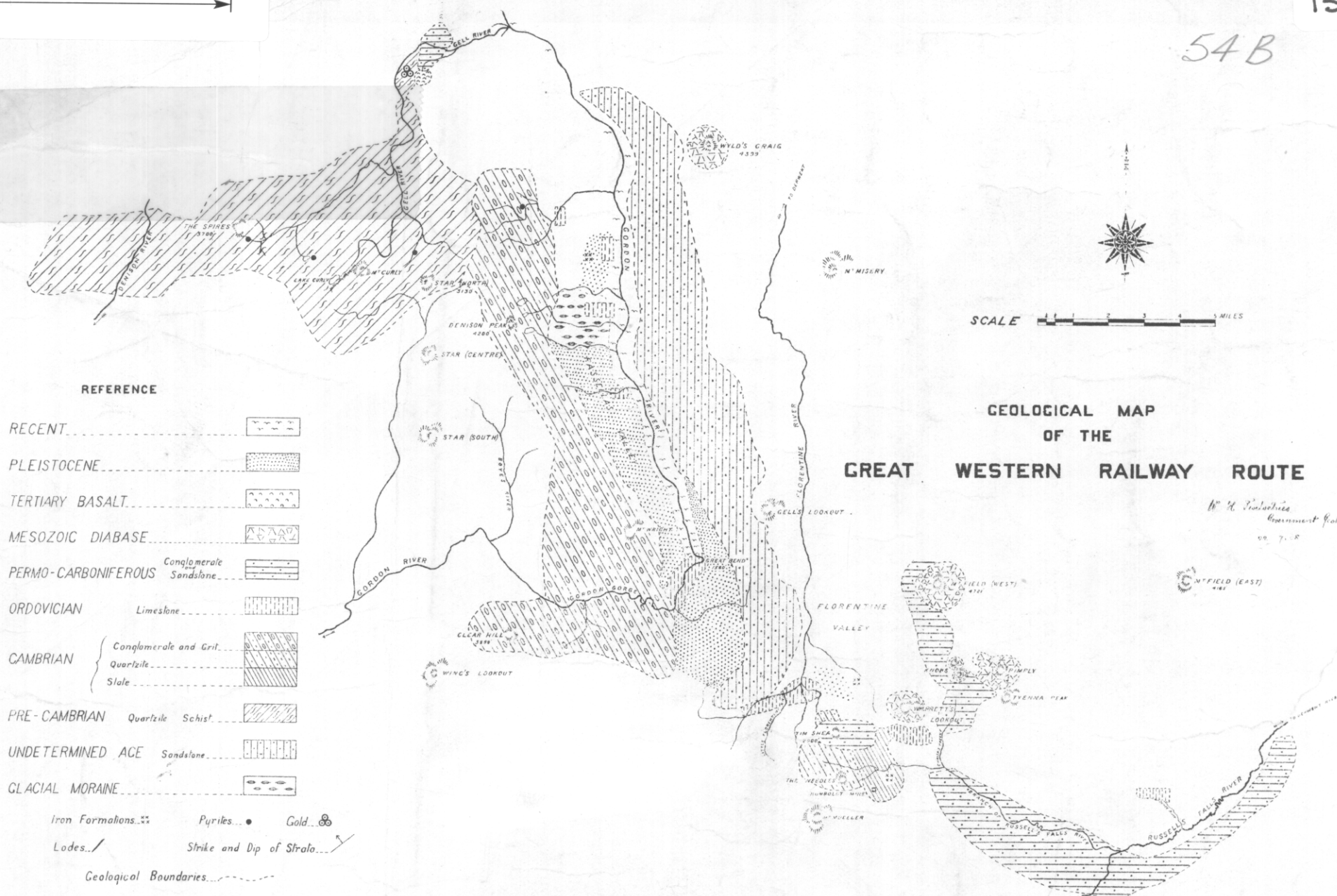


W. H. Finlayson
Government Geologist
1878

Photo Aligned by John Vail Government Printer Hobart Tasmania

54 B

5 cm

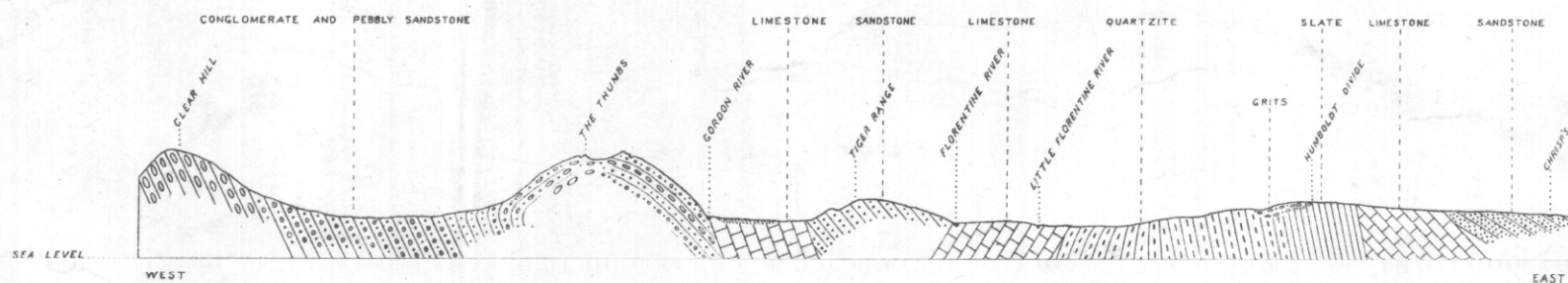


GEOLOGICAL MAP OF THE GREAT WESTERN RAILWAY ROUTE

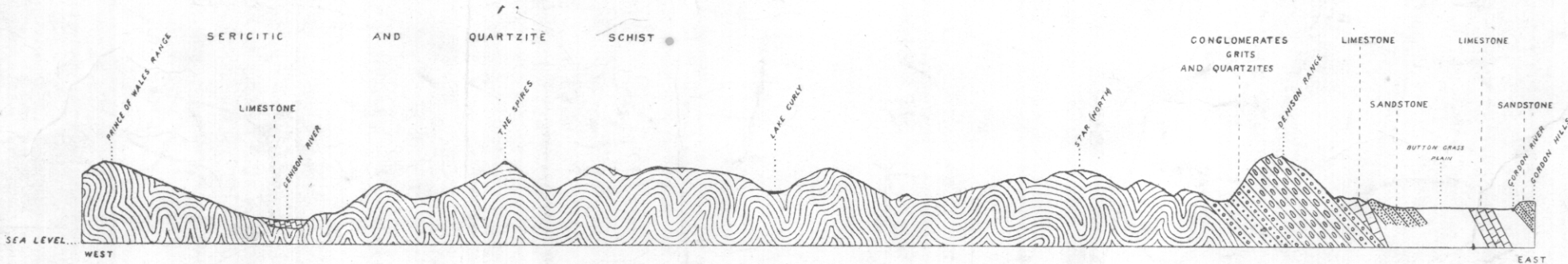
W. H. Finlayson
Government Geologist
1897

Photo Algraphed by John Vail Government Printer Hobart Tasmania

54 C

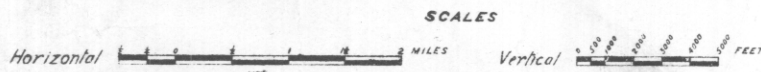


CLEAR HILL TO CHRIS'S CREEK



PRINCE OF WALES RANGE TO GORDON RIVER

GENERALIZED SECTIONS



W. H. Finlayson
Government Geologist
1897

Photo Algraphed by John Vail Government Printer Hobart Tasmania