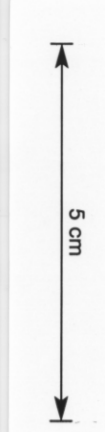
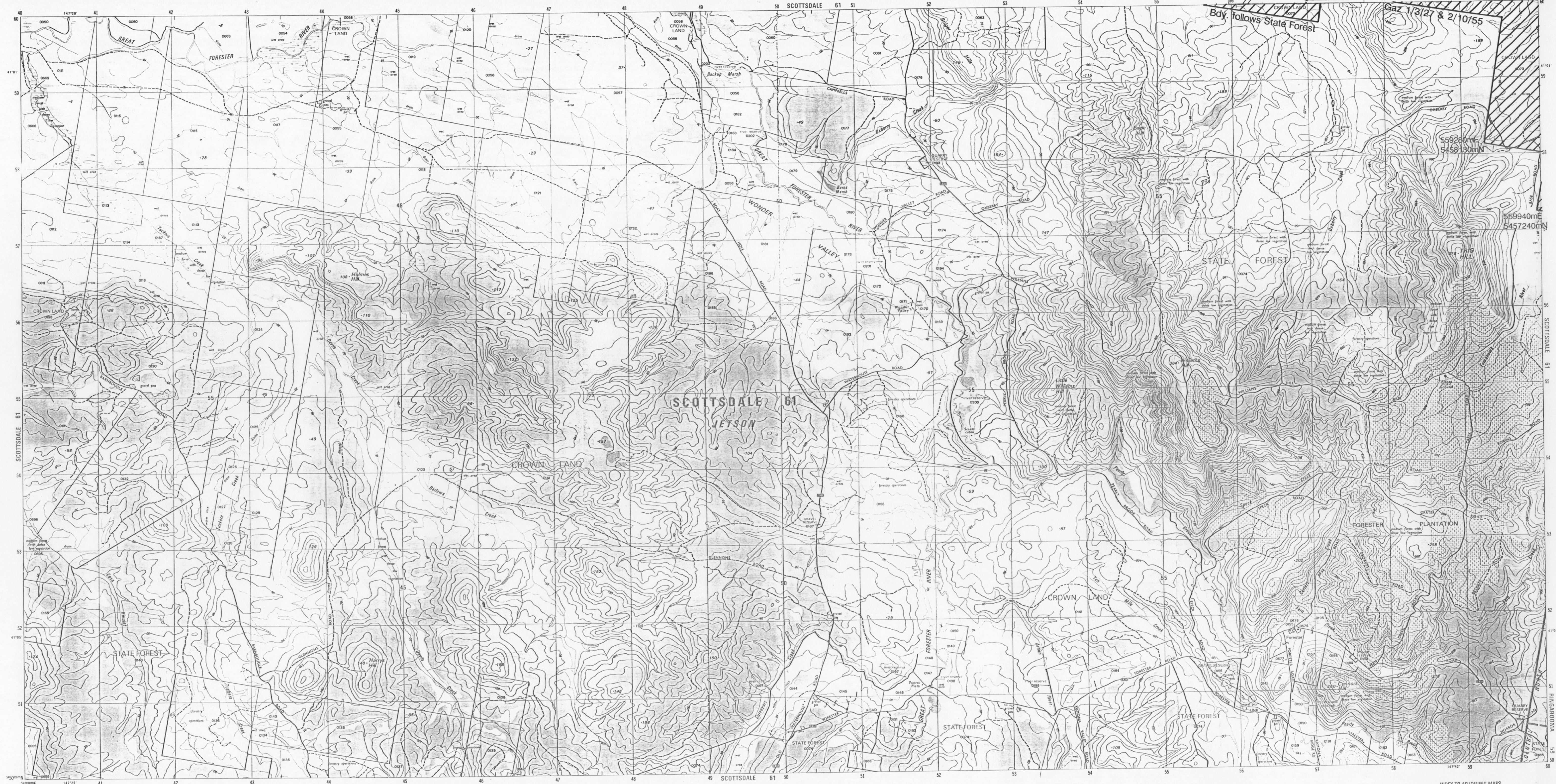


PEARLY BROOK

Note - All boundaries follow property boundaries unless otherwise shown.

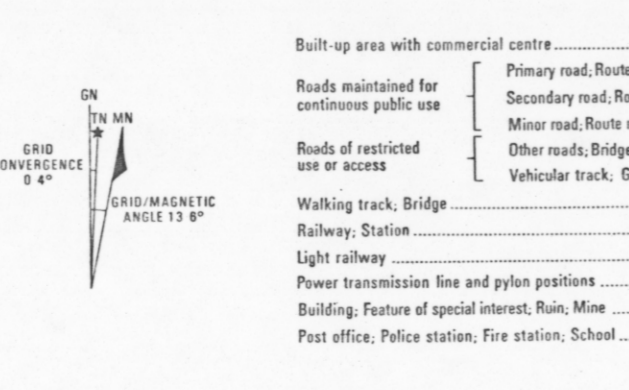
CENTRAL PLAN REGISTER
 Plan No. 3252
 Registered 29.5.95
 Surveyor General



5548
71

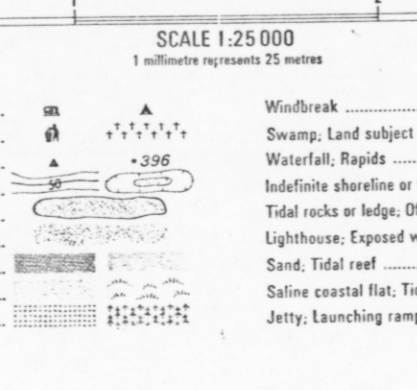
PRODUCTION: Mapping Division, Lands Department, Hobart, 1982.
ACCURACY: Horizontal: 80% of well defined detail is within 12.5 metres of true position. Vertical: 80% of elevations are within 5 metres. These accuracies may not be achieved in areas of dense vegetation.
RELIABILITY: Topographic detail compiled from aerial photography flown 1981 with field verification February 1982.
REVISIONS: None.
REVISIONS: None.
PUBLIC RIGHT OF WAY: Roads or tracks on this map do not necessarily indicate a public right of way.
 To assist in correcting future editions of this map, users noting errors and omissions are invited to write to the Director of Mapping, GPO Box 444, Hobart, Tasmania, 7001.
 © TASMANIAN GOVERNMENT 1982.

PROJECTION: Universal Transverse Mercator (UTM).
HORIZONTAL DATUM: Australian Geodetic Datum 1982.
VERTICAL DATUM: Australian Height Datum (Traverse) excepting offshore islands whose datum is mean sea level.
GRID: 1000 metre intervals of the Universal Transverse Mercator Grid, Zone 55 (Australian Map Grid). Australian National Spheroid.
CONTOUR INTERVAL: 10 metres with 50 metre index contours.
WORLD GEODETIC SYSTEM 1972: To convert co-ordinates from this system to Australian Geodetic Datum 1982, increase the value of latitude by 5.3" and decrease the value of longitude by 4.2". To obtain height decrease specific heights by 2 metres.
MAGNETIC VARIATION: True, Grid and Magnetic North are shown diagrammatically for the centre of this map. Magnetic North is correct for 1982 and moves westerly about 0.1" every two years.



- Built up area with commercial centre
- Roads maintained for continuous public use
- Roads of restricted use or access
- Walking track, Bridge
- Railway, Station
- Light railway
- Power transmission line and pylon positions
- Building, Feature of special interest, Ruin, Mine
- Post office, Police station, Fire station, School

- Caravan park, Camping ground
- Rubbish disposal area, Cemetery
- Trigonometric station, Spot elevation
- Contour with value, Depression contour
- Quarry or open cut mine
- Broken rocky surface
- Open forest, Medium forest
- Low dense vegetation, Distinctive grass
- Orchard, Pine plantation



- Windbreak
- Swamp, Land subject to flooding
- Waterfall, Rapids
- Indefinite shoreline or floodbank, Levee
- Tidal rocks or ledge, Offshore rock
- Lighthouse, Exposed wreck
- Sand, Tidal reef
- Saline coastal flat, Tidal flats
- Jetty, Launching ramp

BOUNDARIES: Shown on this map are NOT authoritative. For full particulars please consult the Registrar-General's Department or the Lands Department.
 Property and land parcel boundaries are shown as at July 1982.
 Areas within graduated towns or less than five hectares are not depicted. To give a land parcel reference, prefix parcel number with municipal number.
 Municipality name: **LILYDALE 55**
 Municipality number: **55**
 Ward name: **JETSON**
 Ward boundary
 Town boundary
 Reserve boundary
 Property boundary, Land parcel boundary and number: **0371/1**

