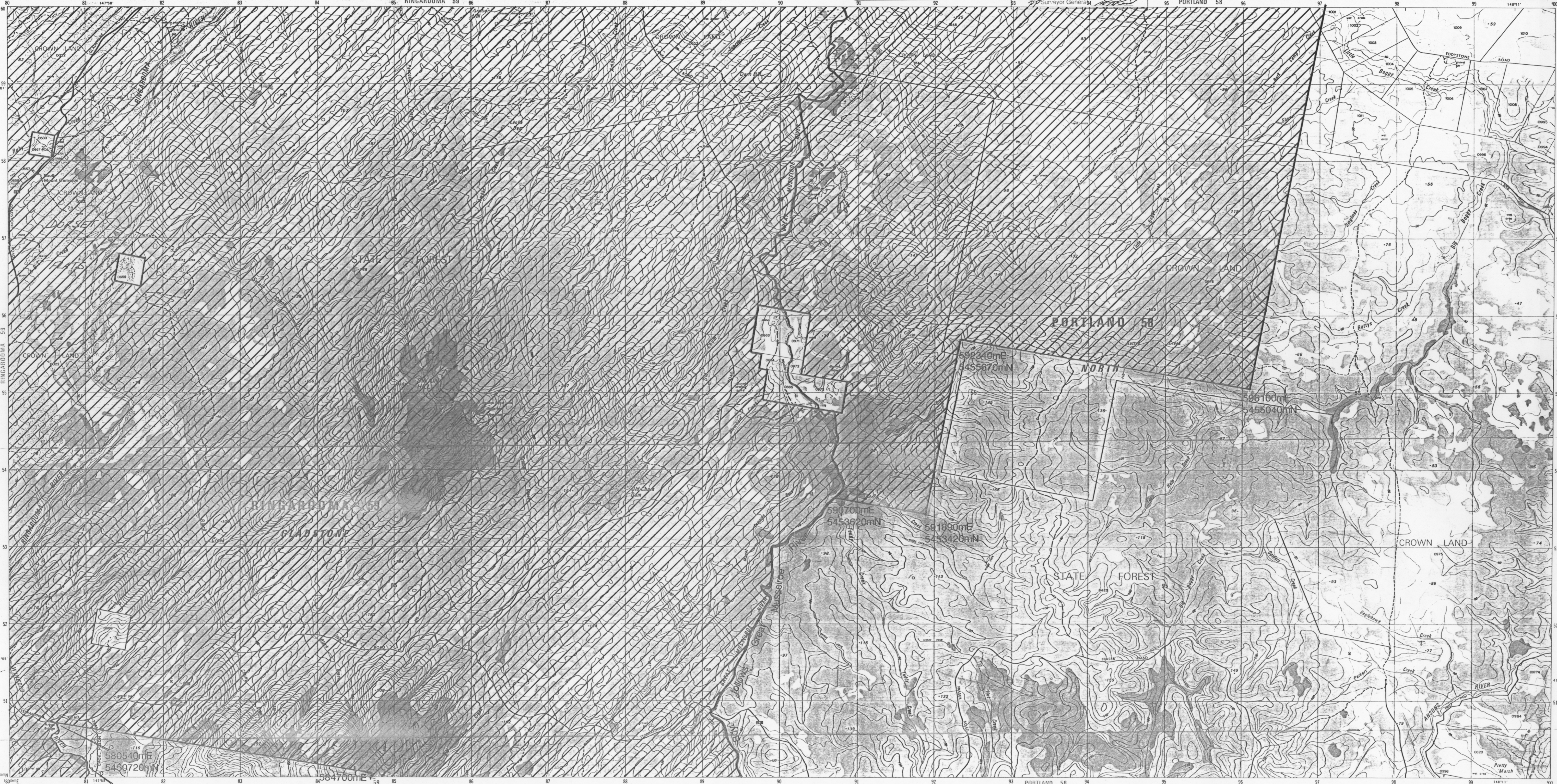


Note: All boundaries follow property boundaries unless otherwise shown.

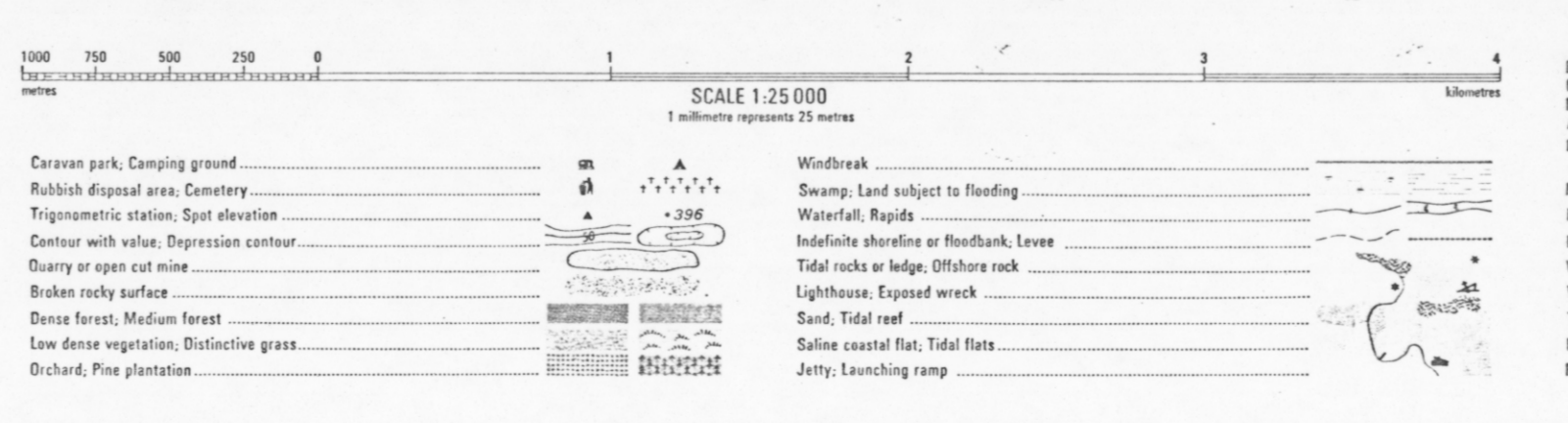
CENTRAL PLAN REGISTER  
 Plan No. 3258  
 Registered 29.5.95  
 Surveyor General



**PRODUCTION:** Mapping Division, Lands Department, Hobart, 1982.  
**ACCURACY:** Horizontal, 90% of well defined detail is within 12.5 metres of true position. Vertical, 90% of elevations are within 5 metres. These accuracies may not be achieved in areas of dense vegetation.  
**NEGLIGENCE:** Topographic detail compiled from aerial photography flown 1981 with field verification 1982.  
**WARRANTY:** Topographic names have been approved by the Nomenclature Board of Tasmania.  
**PUBLIC RIGHT OF WAY:** Roads or tracks on this map do not necessarily indicate a public right of way.  
 To assist in correcting future editions of this map, users noting errors and omissions are invited to write to the Director of Mapping, GPO Box 444, Hobart, Tasmania, 7001.  
 © TASMANIAN GOVERNMENT 1982.

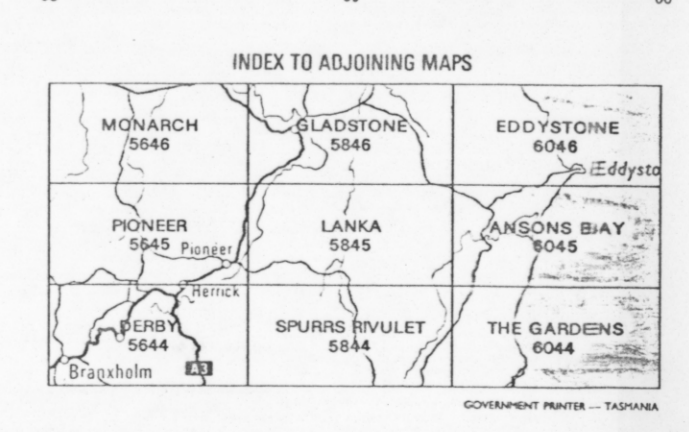
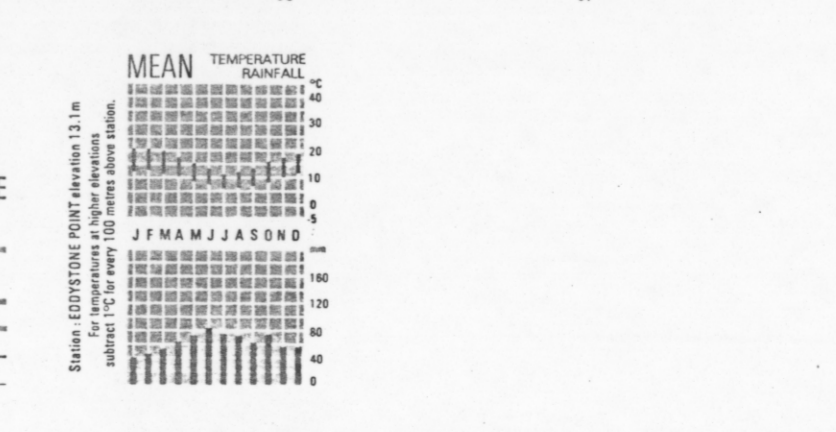
**PROJECTION:** Universal Transverse Mercator (UTM).  
**HORIZONTAL DATUM:** Australian Geodetic Datum 1984.  
**VERTICAL DATUM:** Australian Height Datum (Tasmania) excepting offshore islands whose datum is mean sea level.  
**GRID:** 1000 metre intervals of the Universal Transverse Mercator Grid, Zone 55 (Australian Map Grid). Australian National Spheroid.  
**Grid values:** are shown in full at the south west corner of the map.  
**CONTOUR INTERVAL:** 10 metres with 50 metre index contours.  
**WORLD GEODETIC SYSTEM 1972:** To convert co-ordinates from this system to Australian Geodetic Datum 1984, increase the value of latitude by 5.3" and decrease the value of longitude by 4.2". To obtain height decrease sea level heights by 2 metres.  
**MAGNETIC VARIATION:** True, Grid and Magnetic North are shown diagrammatically for the centre of this map. Magnetic North is correct for 1982 and moves westerly about 0.1" every two years.

- |  |                              |   |   |
|--|------------------------------|---|---|
| Built-up area with commercial centre               | Primary road, Route number   | Caravan park, Camping ground            | Windbreak                                 |
| Roads maintained for continuous public use         | Secondary road, Route number | Rubbish disposal area, Cemetery         | Swamp, Land subject to flooding           |
| Moor roads, Route number                           | Moor roads, Route number     | Trigonometric station, Spot elevation   | Waterfall, Rapids                         |
| Roads of restricted use or access                  | Other roads, Bridge          | Contour with value, Depression contour  | Headlands, shorelines or floodbank, levee |
| Working track, Bridge                              | Vehicular track, Gate        | Quarry or open cut mine                 | Tidal rocks or ledge, Offshore rock       |
| Railway, Station                                   |                              | Broken rocky surface                    | Lighthouse, Exposed wreck                 |
| Light railway                                      |                              | Dense forest, Medium forest             | Sand, Tidal reef                          |
| Power transmission line and pylon positions        |                              | Low dense vegetation, Distinctive grass | Saline coastal flat, Tidal flats          |
| Building, Features of special interest, Ruin, Mine |                              | Orchard, Pine plantation                | Jetty, Launching ramp                     |
| Post office, Police station, Fire station, School  |                              |   |   |



BOUNDARIES shown on this map are NOT authoritative. For full particulars please consult the Registrar-General's Department or the Lands Department.  
 Property and land parcel boundaries are shown as at July 1982.  
 Areas within graduated towns or less than two hectares are not depicted. To give a land parcel reference, prefix parcel number with municipal number.

Municipality name: LILYDALE  
 Municipality number: 55  
 Ward name: JETSON  
 Town boundary:  
 Reserve boundary:  
 Property boundary, Land parcel boundary and number: / 0077 /



5553  
76