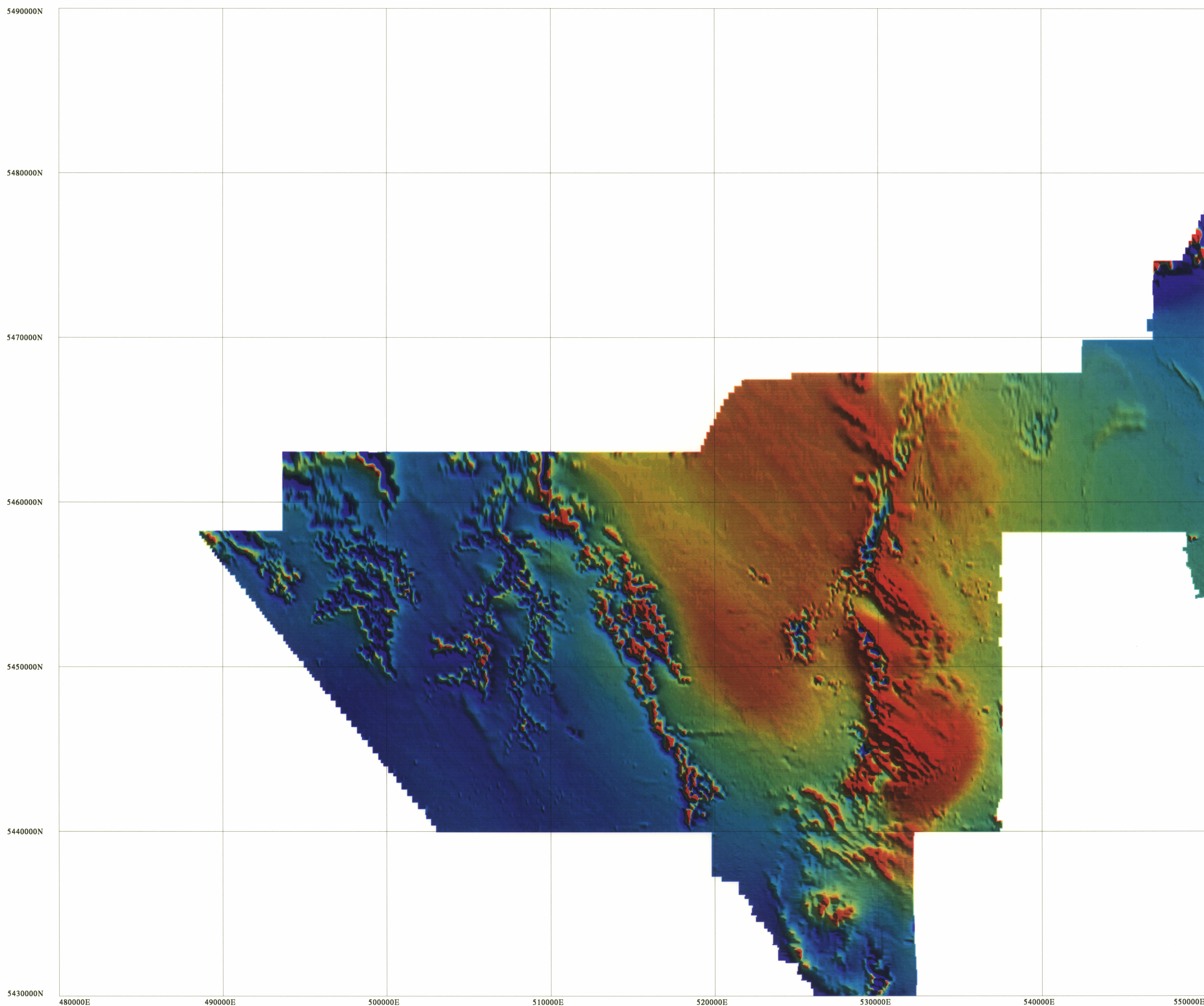


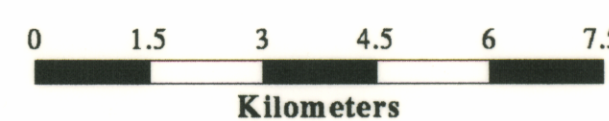
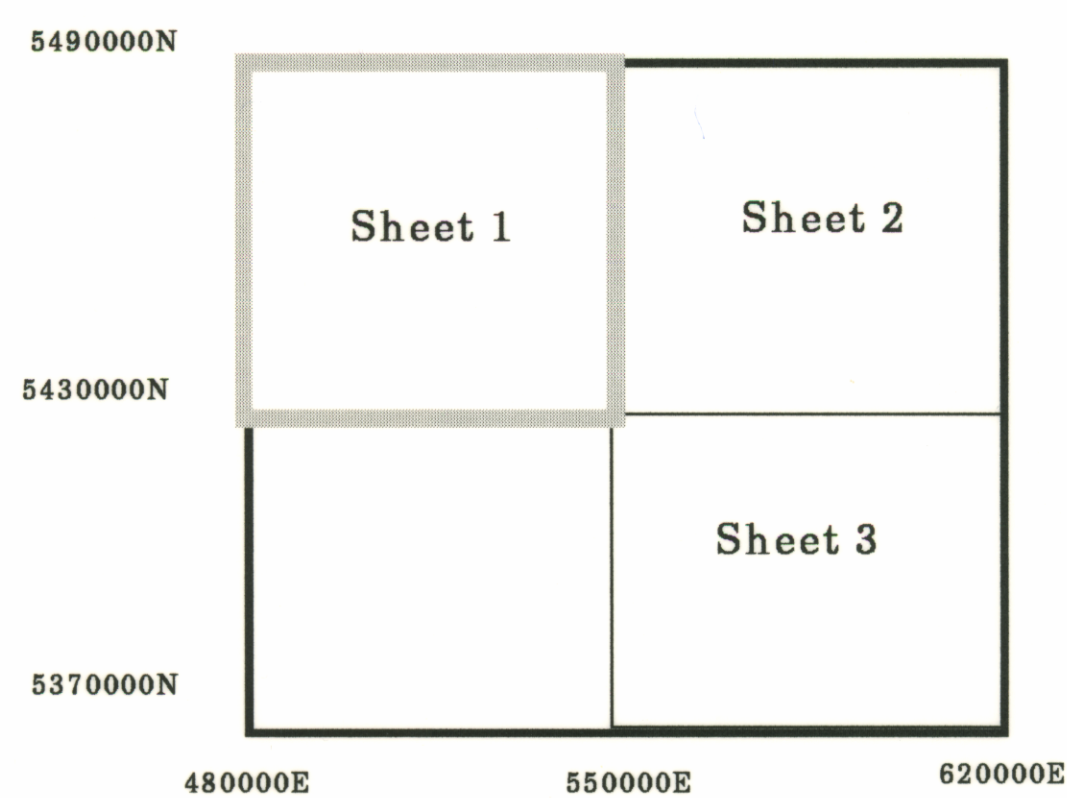
5 cm

NETGOLD - Residual Magnetic Intensity

Mineral Resources Tasmania



Index To Adjoining Sheets



Mineral Resources Tasmania
 Resource Exploration and Development Division
Residual Magnetic Intensity
 (Netgold)

Processing Sequence

Gridded 50m * 50m mesh
No Additional Smoothing

Data Sources :

Data from Mineral Resources Tasmania Netgold Data Package

March 1994
 Algorithm:netgold_mag_100_s1
 Sunangle:Northeast
 Scale 1:100000

