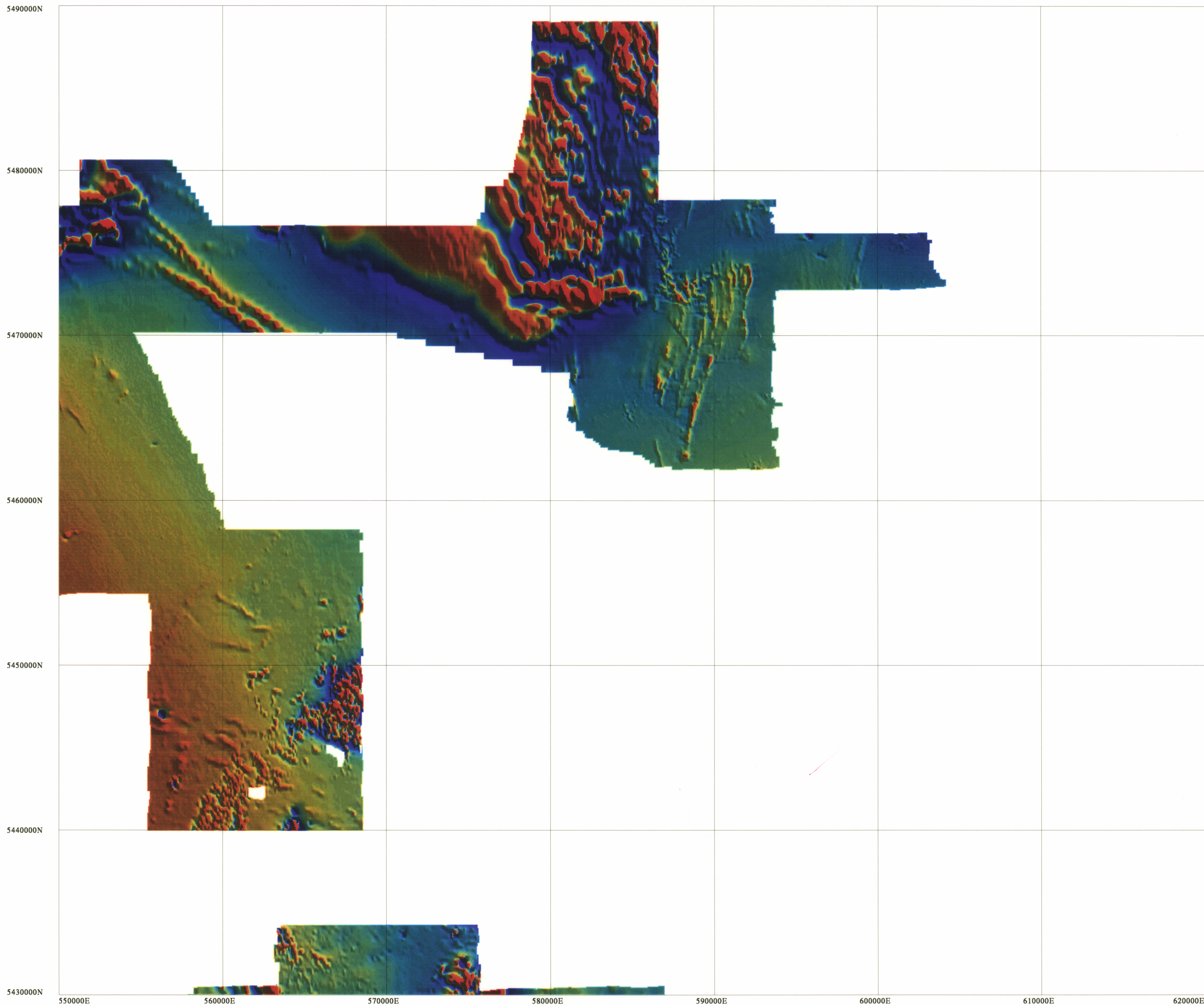


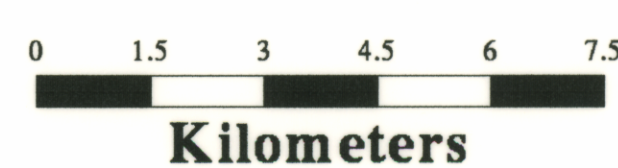
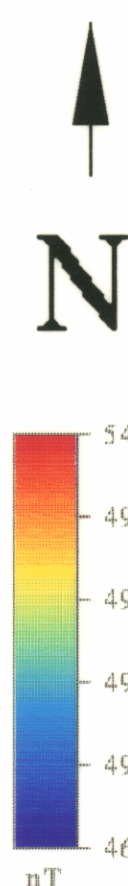
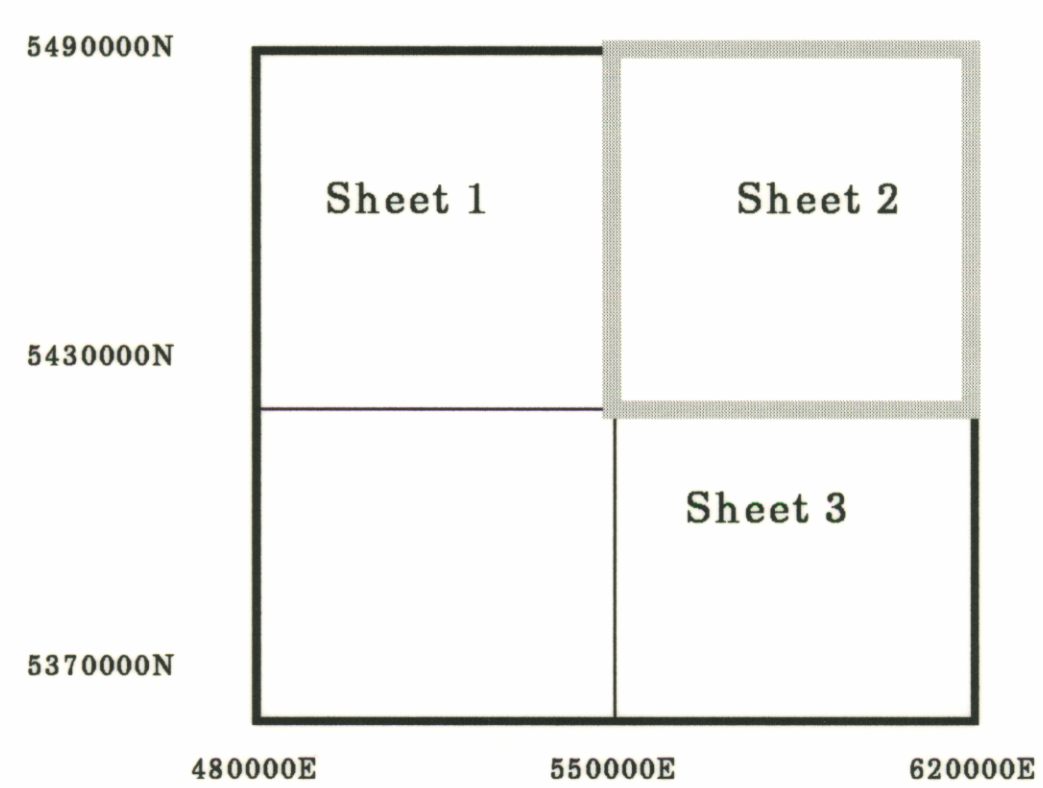
5 cm

NETGOLD - Residual Magnetic Intensity

Mineral Resources Tasmania



Index To Adjoining Sheets



Mineral Resources Tasmania
 Resource Exploration and Development Division
Residual Magnetic Intensity
 (Netgold)

Processing Sequence
 Gridded 50m * 50m mesh
 No Additional Smoothing

Data Sources :
 Data from Mineral Resources Tasmania Netgold Data Package

March 1994
 Algorithm: netgold_mag_100_s2
 Sunangle: Northeast
 Scale 1:100000

