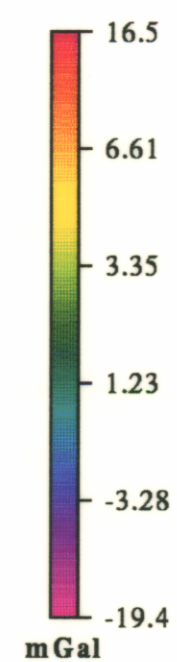
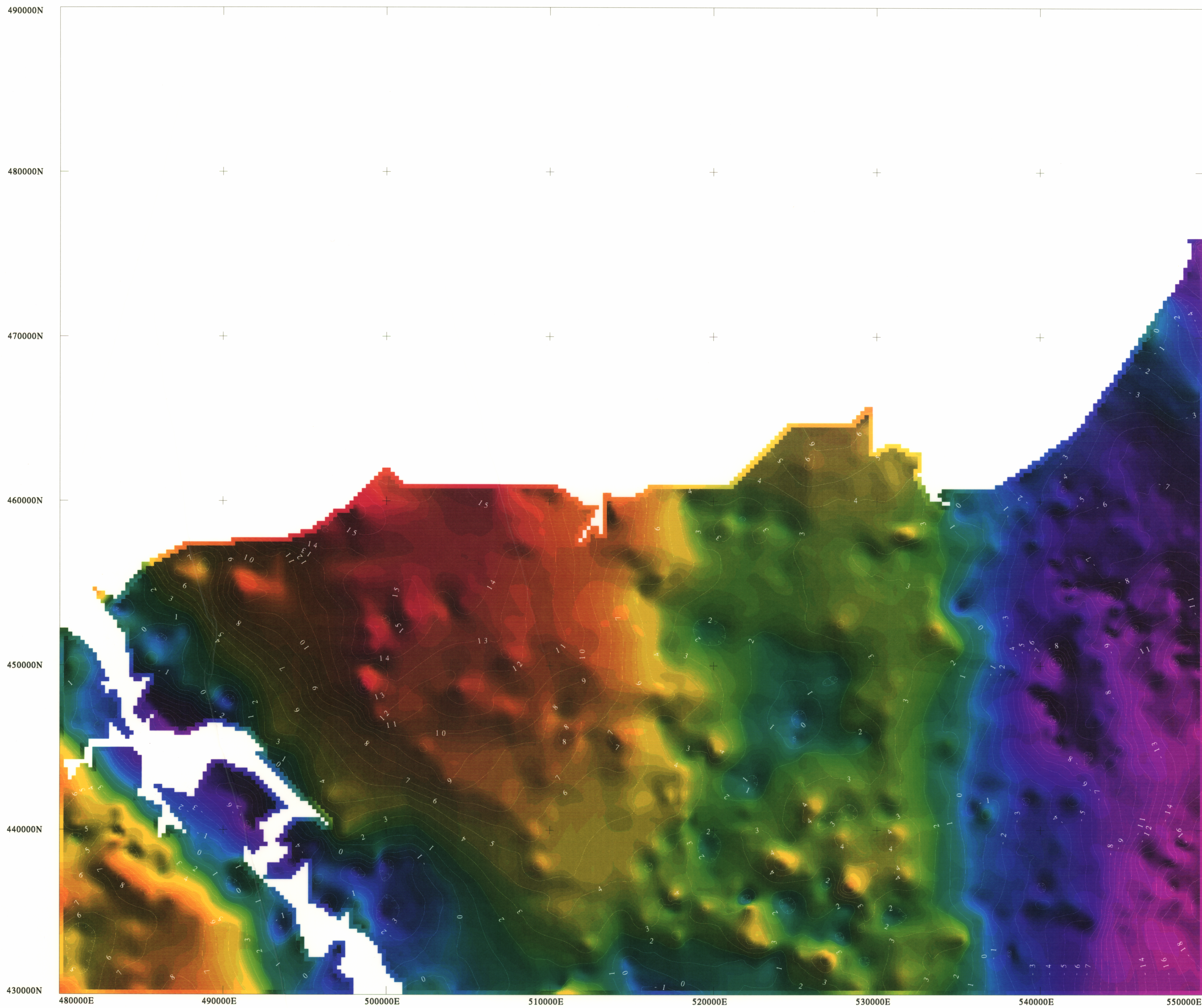
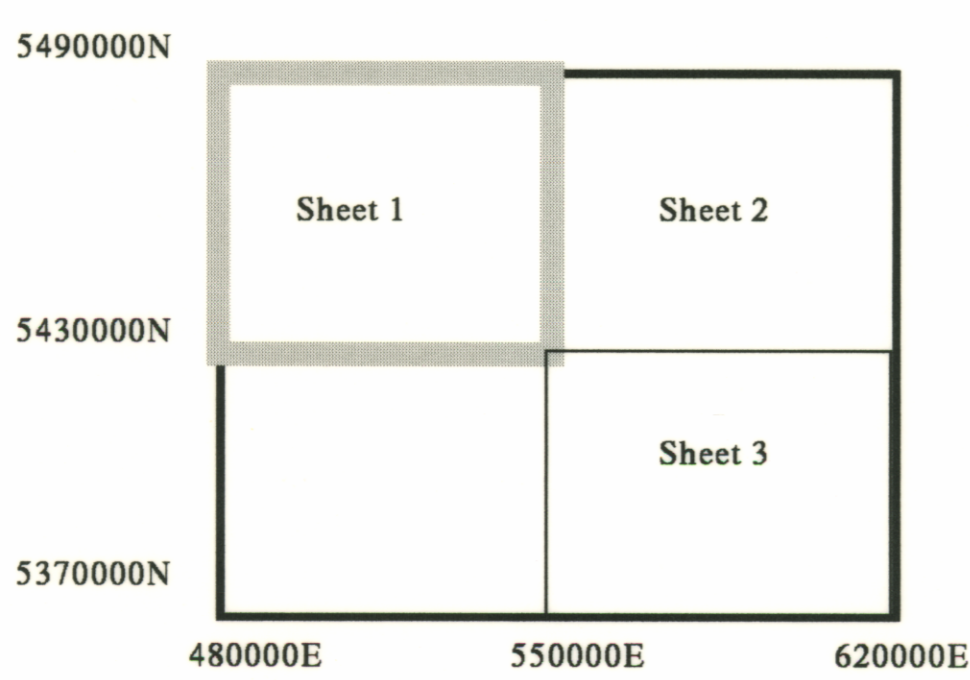


# NETGOLD - Residual Gravity Anomaly

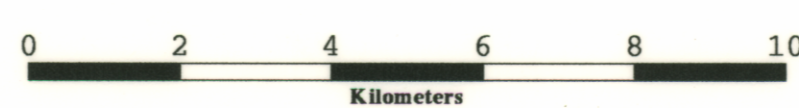
Mineral Resources Tasmania



Index To Adjoining Sheets



Contour Interval 1 mGal



Scale 1:100000

Mineral Resources Tasmania

Resource Exploration and Development Division  
Residual Gravity  
(Bouguer Anomaly - Mantle91)

Processing Sequence

Terrain Corrected -  
Bouguer Reduction - Density=2.67 t/m<sup>3</sup>  
MANTLE91 Regional Field Removed  
GRIDDING  
250 metre mesh  
8000 metre scan distance  
no additional smoothing

Processing Information

Compilation - R. G. Richardson, B.Sc.(Hons), Ph.D.  
MANTLE91 Model - D. E. Lomen, B.Sc.(Hons), Ph.D.  
Computer Mapping - R. J. Sedgman  
Data Sources Linked to :-  
RICHARDSON, R. G., LISMAN, D. E. 1987  
TASGRAV - The Tasmanian Gravity Data Base  
Unpubl. Rep. Dep. Mines Tasn. 1987/02

March 1994  
Algorithm:netgold\_grav\_100\_s1



TASMANIA  
DEVELOPMENT  
AND RESOURCES