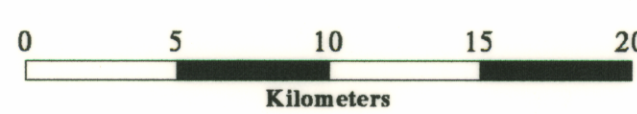
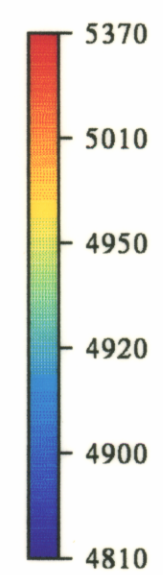
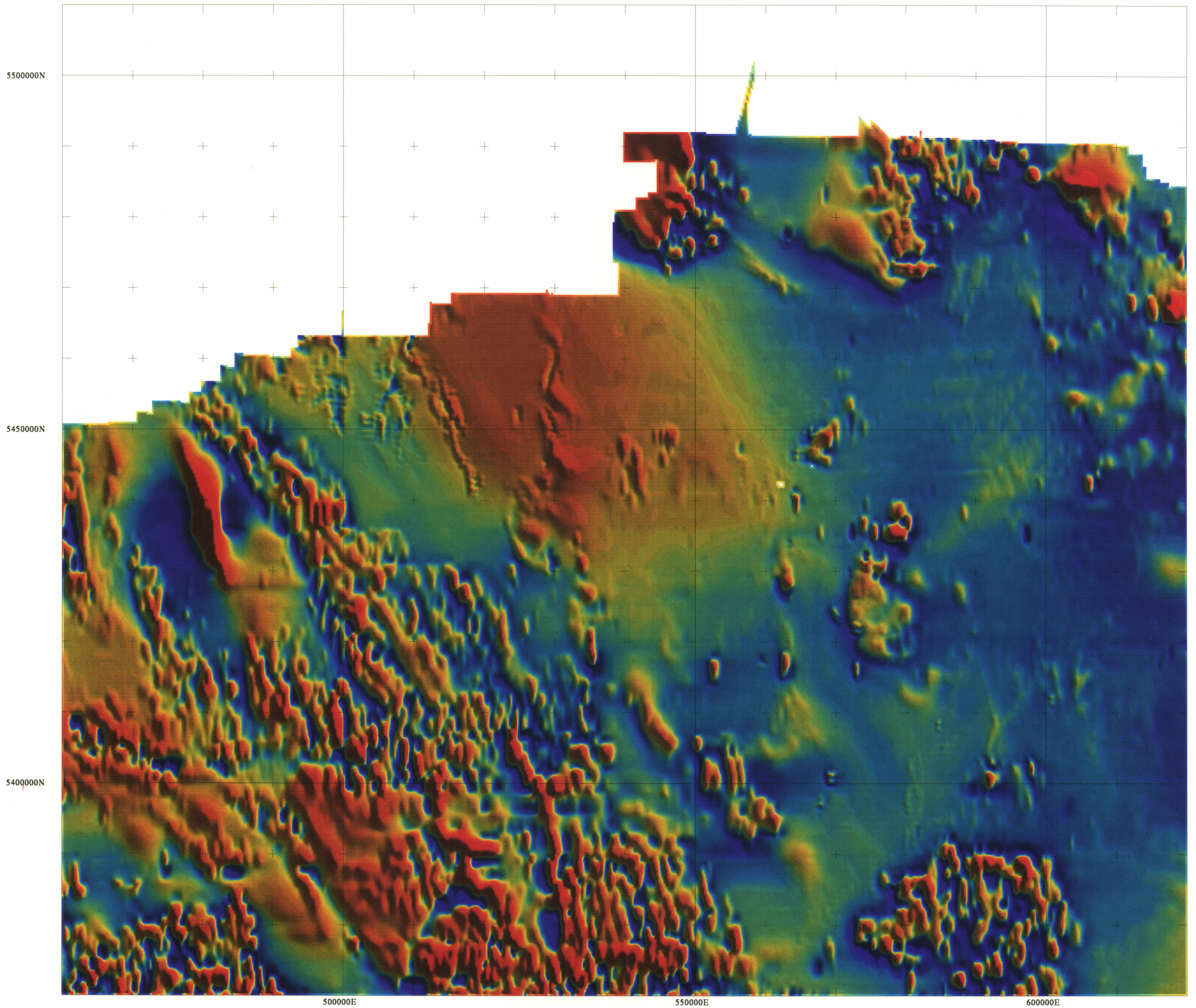


# NETGOLD - Residual Magnetic Intensity

Mineral Resources Tasmania - Australian Geological Survey Organisation



### Residual Magnetic Intensity (Netgold)

**Processing Sequence**      **Data Sources :**  
 Gridded 250m \* 250m mesh      Regional data from the Australian Geological Survey Organisation (1500 metre E-W flight lines)  
 Smoothed with a 2000m Gaussian filter      Detailed data over the NETGOLD areas from Mineral Resources Tasmania (line spacing 125 - 500 metres)

March 1994  
 Algorithm: netgold\_mag\_250  
 Sunangle: East to West  
 Scale 1:250000



TASMANIA  
DEVELOPMENT  
AND RESOURCES