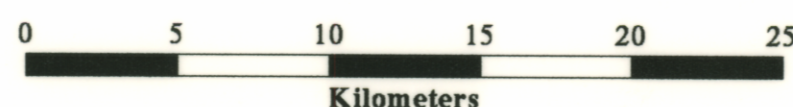
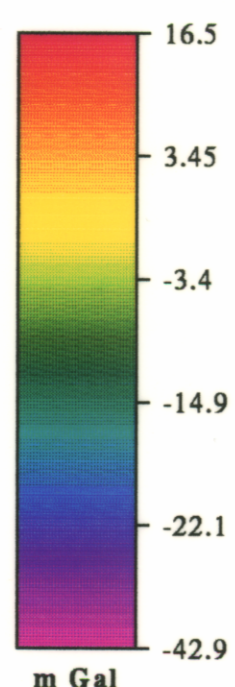
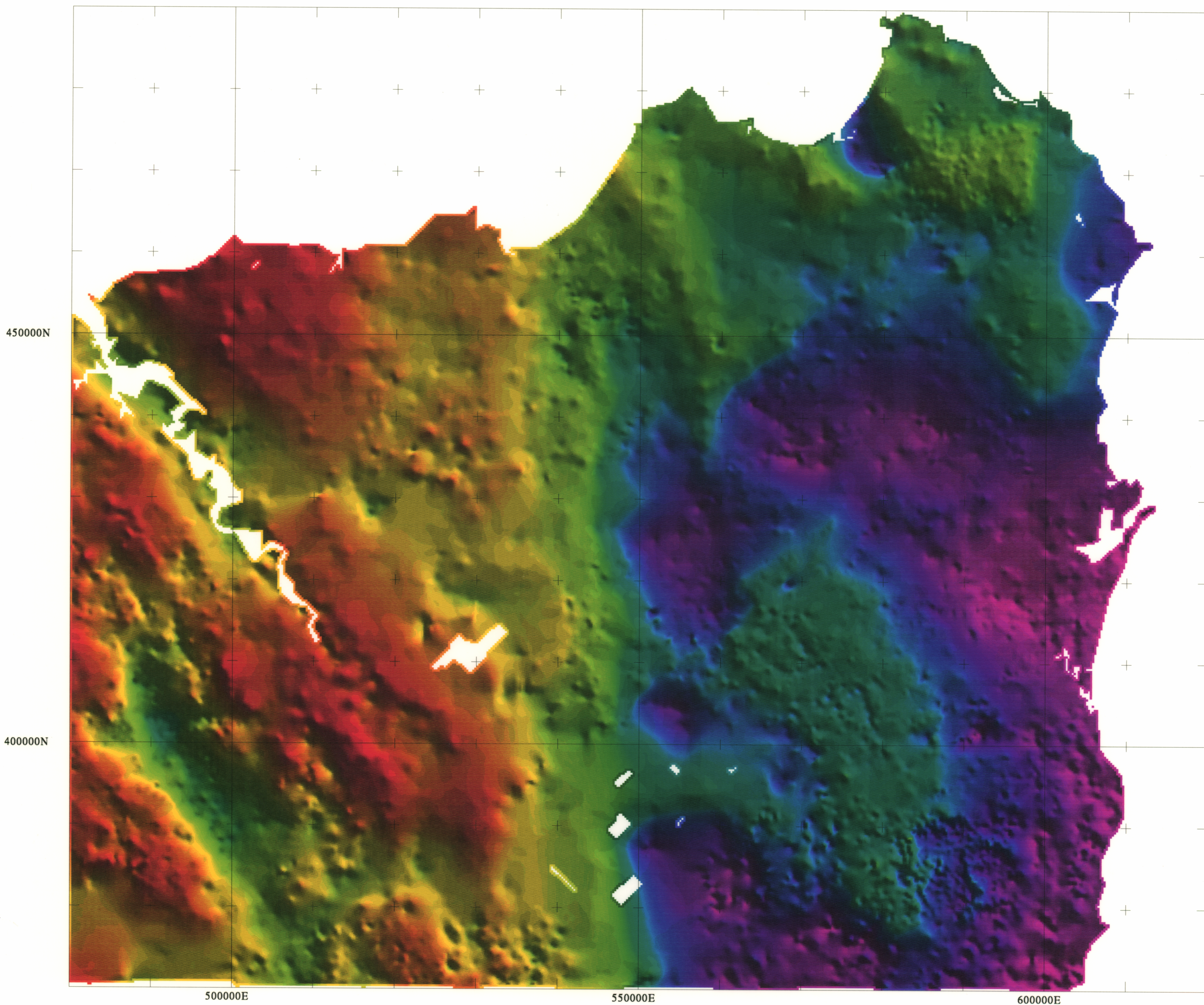


# NETGOLD - Residual Gravity Anomaly

## Mineral Resources Tasmania



Scale 1:250000

**Mineral Resources Tasmania**  
 Resource Exploration and Development Division  
**Residual Gravity**  
 (Bouguer Anomaly - Mantle91)

**Processing Sequence**

Terrain Corrected -  
 Bouguer Reduction - Density=2.67 t/m<sup>3</sup>  
 MANTLE91 Regional Field Removed

**Processing Information**

Compilation - R. G. Richardson, B.Sc.(Hons), Ph.D.  
 MANTLE91 Model - D. E. Leaman, B.Sc.(Hons), Ph.D.  
 Computer Mapping - R. J. Sedgman

Data Sources Listed In :-  
 RICHARDSON, R. G., LEAMAN, D. E. 1987  
 TASGRAV - The Tasmanian Gravity Data Base  
 Unpubl. Rep. Dep. Mines Tasm. 1987/02

March 1994  
 Algorithm:netgold\_grav\_250

