

**AIRBORNE SURVEY SPECIFICATIONS**

ACQUISITION BY: **TESLA AIRBORNE GEOSCIENCE**

JOB No. TA2934

DATE OF SURVEY: April 1996

MAGNETOMETER: Scintrex Cesium Vapour Model CS30  
Resolution 0.001nT

SPECTROMETER: Explorerplus 0950  
Crystal volume 33.3 litres

RECORDING INTERVAL: Magnetometer 0.1 sec (approx. 7m)  
Spectrometer 1.0 sec (approx. 70m)

TERRAIN CLEARANCE: 50m

LINE SPACING: 200m flight lines, 2000m tie lines

LINE DIRECTION: E-W flight lines, N-S tie lines

NAVIGATION: Novatel GPS  
Differentially Post Processed

ACQUISITION SYSTEM: Tesla TAG3

**DATA PROCESSING**

PROCESSING BY: **TESLA-IO**

SYSTEM PARALLAX REMOVED

DIURNAL CORRECTIONS APPLIED

IGRF REMOVED: 1995 model upgraded for secular variation to April 1996  
Base level: 62030.0 nT, Inclination 71.98

DATA TIE-LINE LEVELLED AND MICRO-LEVELLED

GRID ALGORITHM: Bi-cubic spline

GRID CELL SIZE: 50m X 50m

**MAP PRESENTATION**

PROJECTION: UTM

GRID COORDINATES: AMG Zone 55

COORDINATE DATUM: AD 84

**LEGEND**

Contour interval: 2 nanoTesla

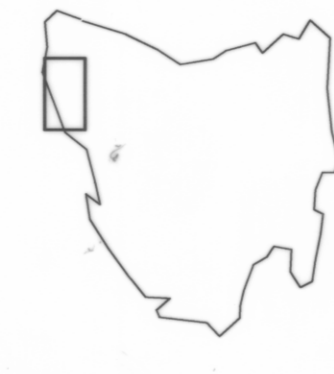
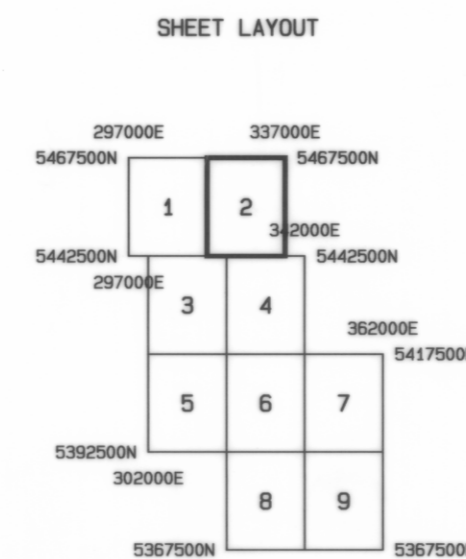
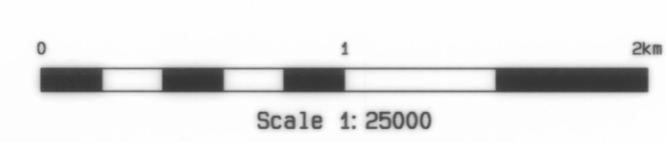
2500 nT Contours

250 nT Contours

50 nT Contours

10 nT Contours

2 nT Contours



MINERAL RESOURCES TASMANIA  
AUSTRALIAN GEOLOGICAL SURVEY ORGANISATION

**NORTHWEST TASMANIA**

**TOTAL MAGNETIC INTENSITY**

DRAWN: TESLA-IO PTY LTD      SCALE: 1:25000

DATE: MAY 1996      SHEET 2 of 9