

AIRBORNE SURVEY SPECIFICATIONS

ACQUISITION BY: **TESLA AIRBORNE GOSCIENCE**

JOB No. 142294
 DATE OF SURVEY: April 1996
 MAGNETOMETER: Scintrex Cesium Vapour Model C10
 Resolution 0.001T
 SPECTROMETER: Explogonium GR80
 Crystal volume 33.0 litres
 RECORDING INTERVAL: Magnetometer 0.1 sec (approx 7m)
 Spectrometer 1.0 sec (approx 70m)
 TERRAIN CLEARANCE: 90m
 LINE SPACING: 200m flight lines, 2000m tie lines
 LINE DIRECTION: E-W flight lines, N-S tie lines
 NAVIGATION: Novatel GPS
 ACQUISITION SYSTEM: Differentially Post Processed
 Tesla TAB3

DATA PROCESSING

PROCESSING BY: **TESLA-IO**

SYSTEM PARALLAX REMOVED
 DIURNAL CORRECTIONS APPLIED
 IGRF REMOVED: 1995 model upgraded for secular variation to April 1996
 Base level: 6200.0 nT, Inclination: -71.98
 DATA TIE-LINE LEVELLED AND MICRO-LEVELLED
 GRID ALGORITHM: Bi-cubic spline
 GRID CELL SIZE: 50m X 50m

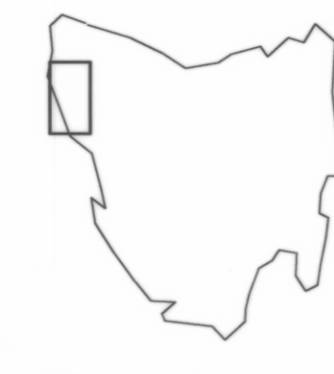
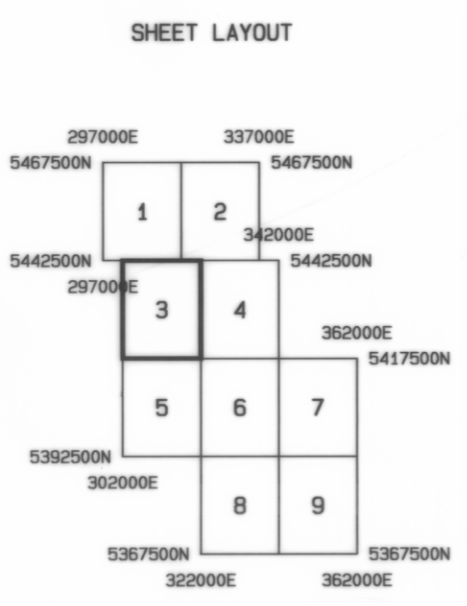
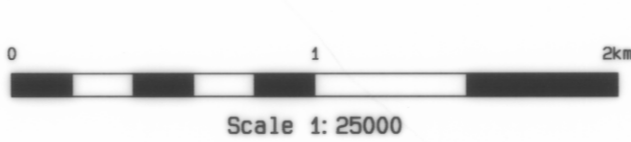
MAP PRESENTATION

PROJECTION: UTM
 GRID COORDINATES: AMG Zone 56
 COORDINATE DATUM: ADG 84

LEGEND

Contour Interval: 2 nanoTesla

- 2500 nT Contours
- 250 nT Contours
- 50 nT Contours
- 10 nT Contours
- 2 nT Contours



**MINERAL RESOURCES TASMANIA
 AUSTRALIAN GEOLOGICAL SURVEY ORGANISATION**

**NORTHWEST TASMANIA
 TOTAL MAGNETIC INTENSITY**

DRAWN: TESLA-IO PTY LTD
 DATE: MAY 1996

SCALE: 1:25000
 SHEET 3 of 9