

**AIRBORNE SURVEY SPECIFICATIONS**

ACQUISITION BY: **TESLA GEOSCIENCE**

JOB No. 142294  
 DATE OF SURVEY: April 1996  
 MAGNETOMETER: Scintrex Cesium Vapour  
 Resolution 0.001T  
 SPECTROMETER: Explorerplus GR80  
 Crystal volume 33.9 litres  
 RECORDING INTERVAL: Magnetometer 0.1 sec (approx 7s)  
 Spectrometer 1.0 sec (approx 70s)  
 TERRAIN CLEARANCE: 90m  
 LINE SPACING: 200m flight lines, 200m tie lines  
 LINE DIRECTION: E-W flight lines, N-S tie lines  
 NAVIGATION: Novatel GPS  
 ACQUISITION SYSTEM: Tesla TAG3

**DATA PROCESSING**

PROCESSING BY: **TESLA-G**

SYSTEM PARALLAX REMOVED  
 DIURNAL CORRECTIONS APPLIED  
 IGRF REMOVED: 1995 model upgraded for secular variation to April 1996  
 Base level: 62030.0 nT, Inclination: -71.98  
 DATA TIE-LINE LEVELLED AND MICRO-LEVELLED  
 GRID ALGORITHM: Bi-cubic spline  
 GRID CELL SIZE: 50m x 50m

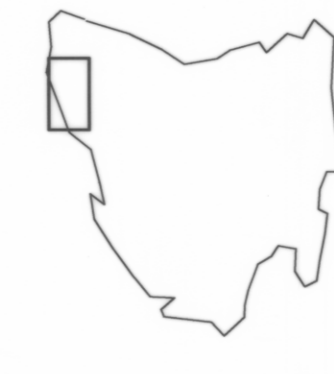
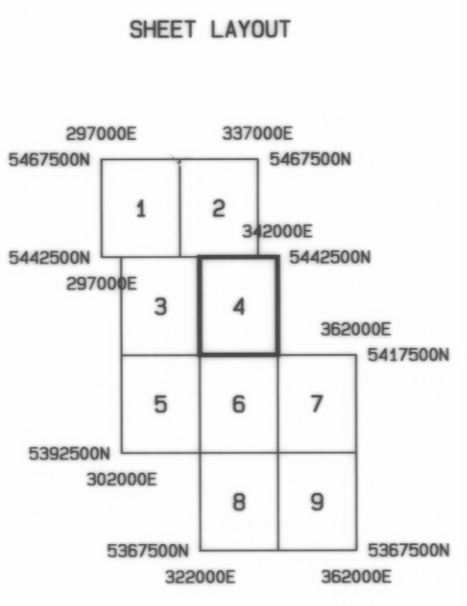
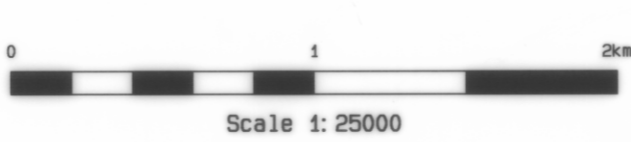
**MAP PRESENTATION**

PROJECTION: UTM  
 GRID COORDINATES: AMG Zone 56  
 COORDINATE DATUM: AD 84

**LEGEND**

Contour interval: 2 nanoTesla

2500 nT Contours  
 250 nT Contours  
 50 nT Contours  
 10 nT Contours  
 2 nT Contours



**MINERAL RESOURCES TASMANIA  
 AUSTRALIAN GEOLOGICAL SURVEY ORGANISATION**

**NORTHWEST TASMANIA  
 TOTAL MAGNETIC INTENSITY**

DRAWN: TESLA-10 PTY LTD  
 DATE: MAY 1996

SCALE 1:25000  
 SHEET 4 of 9