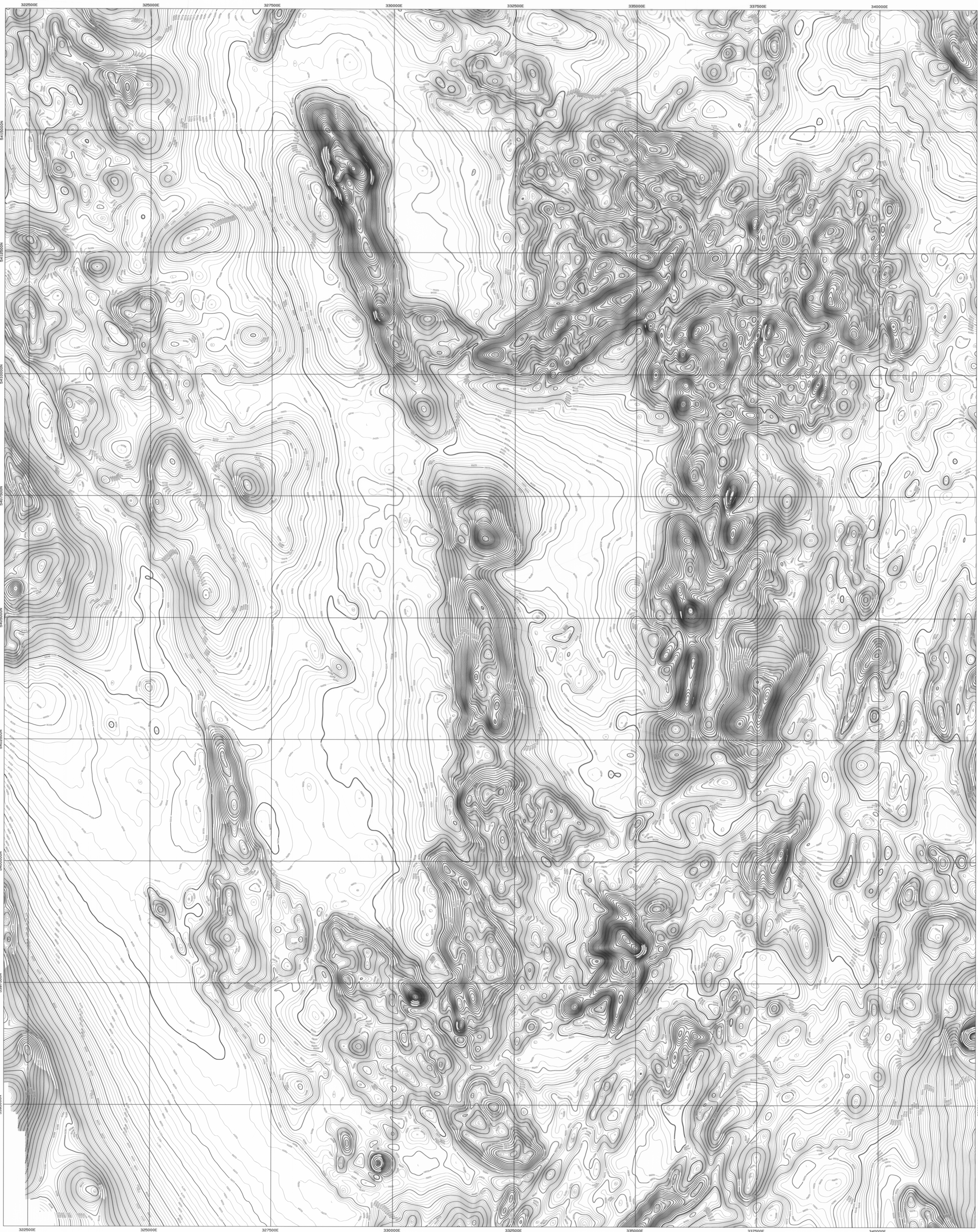


5 cm



AIRBORNE SURVEY SPECIFICATIONS

ACQUISITION BY: **TESLA AIRBORNE GEOSCENCE**

JOB No: TAZ294

DATE OF SURVEY: April 1996

MAGNETOMETER: Scintrex Cesium Vapour Model CS2 Resolution 0.001nT

SPECTROMETER: Exploration 9880 Crystal Volume 33.2 litres

RECORDING INTERVAL: Magnetometer 0.1 sec (approx 7m) Spectrometer 1.0 sec (approx 70m)

TERRAIN CLEARANCE: 200m flight lines, 2000m tie lines

LINE SPACING: E-W flight lines, N-S tie lines

NAVIGATION: Novatel GPS Differentially Post Processed

ACQUISITION SYSTEM: Tesla TAGS

DATA PROCESSING

PROCESSING BY: **TESLA-10**

SYSTEM PARALLAX REMOVED

DIURNAL CORRECTIONS APPLIED

IGRF REMOVED: 1995 model upgraded for secular variation to April 1996 Base level: 62030.0 nT; Inclination: -71.98

DATA TIE-LINE LEVELLED AND MICRO-LEVELLED

GRID ALGORITHM: 81-cubic spline

GRID CELL SIZE: 50m x 50m

MAP PRESENTATION

PROJECTION: UTM

GRID COORDINATES: AMG Zone 55

COORDINATE DATUM: AGD 84

LEGEND

Contour interval: 2 nanoTesla

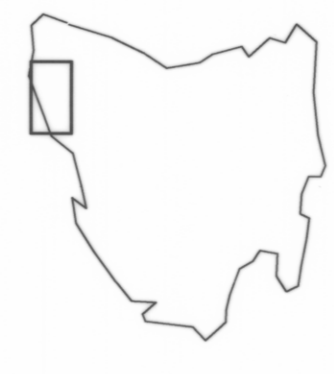
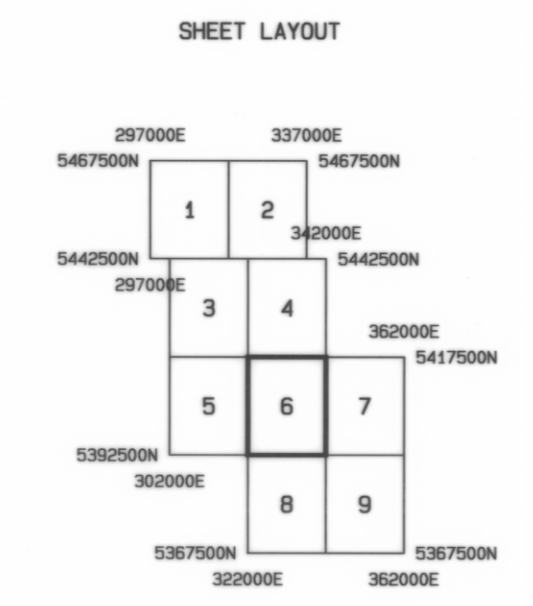
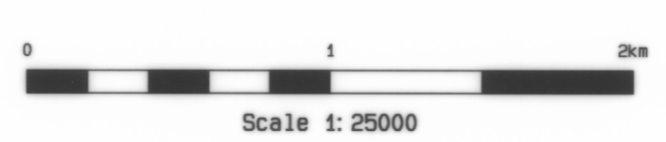
2500 nT Contours

250 nT Contours

50 nT Contours

10 nT Contours

2 nT Contours



MINERAL RESOURCES TASMANIA
AUSTRALIAN GEOLOGICAL SURVEY ORGANISATION

NORTHWEST TASMANIA

TOTAL MAGNETIC INTENSITY

DRAWN: TESLA-10 PTY LTD SCALE: 1:25000

DATE: MAY 1996 SHEET 6 of 9