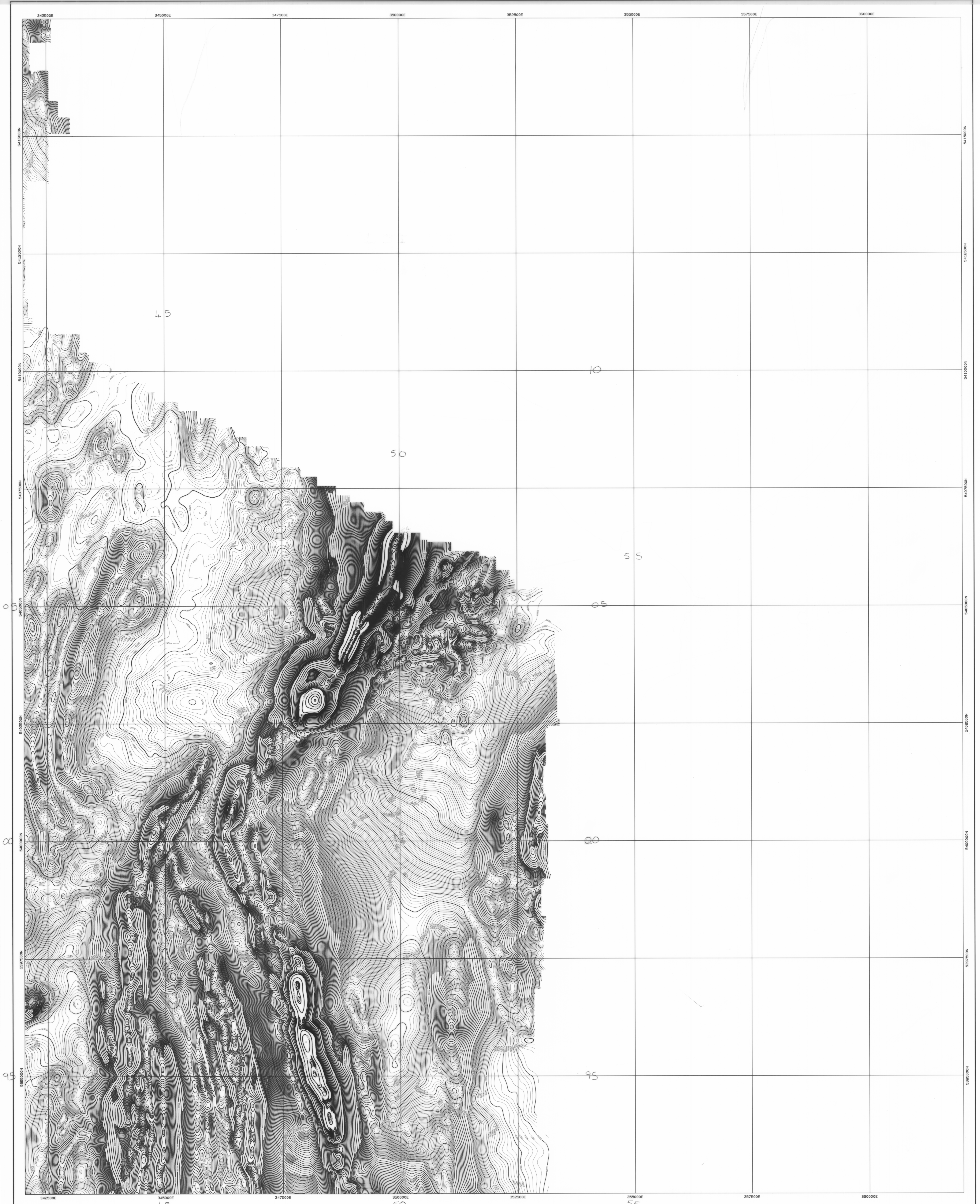


5 cm



AIRBORNE SURVEY SPECIFICATIONS

ACQUISITION BY: **TESLA AIRBORNE GEOSCIENCE**

JOB No. 1A2094

DATE OF SURVEY: April 1996

MAGNETOMETER: Scintrex Cesium Vepour
Model: 500
Resolution: 0.05nT

SPECTROMETER: Explorerium 9820
Crystal volume: 33 x 11cm³

RECORDING INTERVAL: Magnetometer: 0.1 sec (approx 7m)
Spectrometer: 1.0 sec (approx 70m)

TERRAIN CLEARANCE: 50m

LINE SPACING: 200m flight lines, 200m tie lines

LINE DIRECTION: E-W flight lines, N-S tie lines

NAVIGATION: Novatel GPS
Differentially Post Processed

ACQUISITION SYSTEM: Tesla TAB3

DATA PROCESSING

PROCESSING BY: **TESLA-10**

SYSTEM PARALLAX REMOVED

DIURNAL CORRECTIONS APPLIED

IGRF REMOVED: 1995 model upgraded for secular variation to April 1996
Base level: 60030.0 nT, Inclination: -71.98

DATA TIE-LINE LEVELLED AND MICRO-LEVELLED

GRID ALGORITHM: Bi-cubic spline

GRID CELL SIZE: 50m x 50m

MAP PRESENTATION

PROJECTION: UTM

GRID COORDINATES: AMG Zone 55

COORDINATE DATUM: AGD 84

LEGEND

Contour interval: 2 nanoTesla

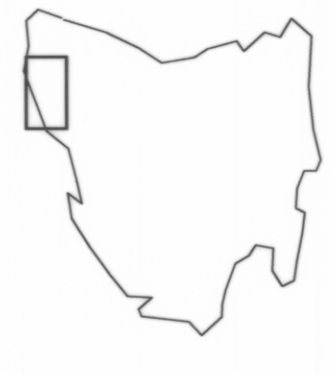
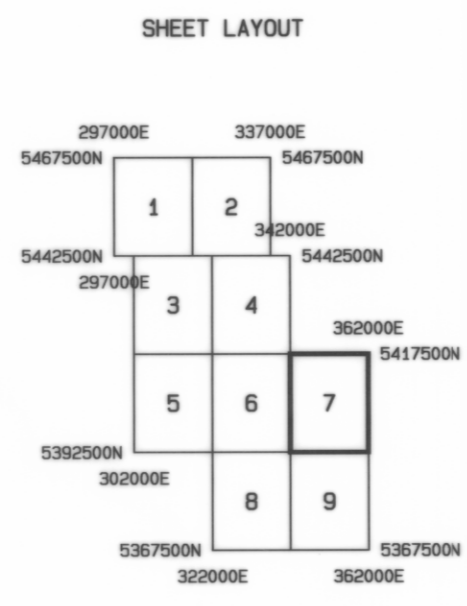
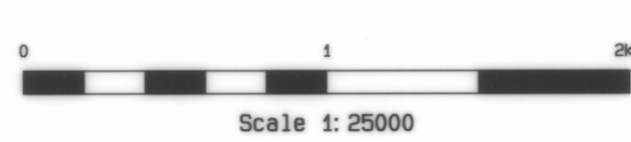
2500 nT Contours

250 nT Contours

50 nT Contours

10 nT Contours

2 nT Contours



**MINERAL RESOURCES TASMANIA
AUSTRALIAN GEOLOGICAL SURVEY ORGANISATION**

NORTHWEST TASMANIA

TOTAL MAGNETIC INTENSITY
parts of Meredith, Savage River

DRAWN: TESLA-10 PTY LTD SCALE 1: 25000

DATE: MAY 1996 SHEET 7 of 9