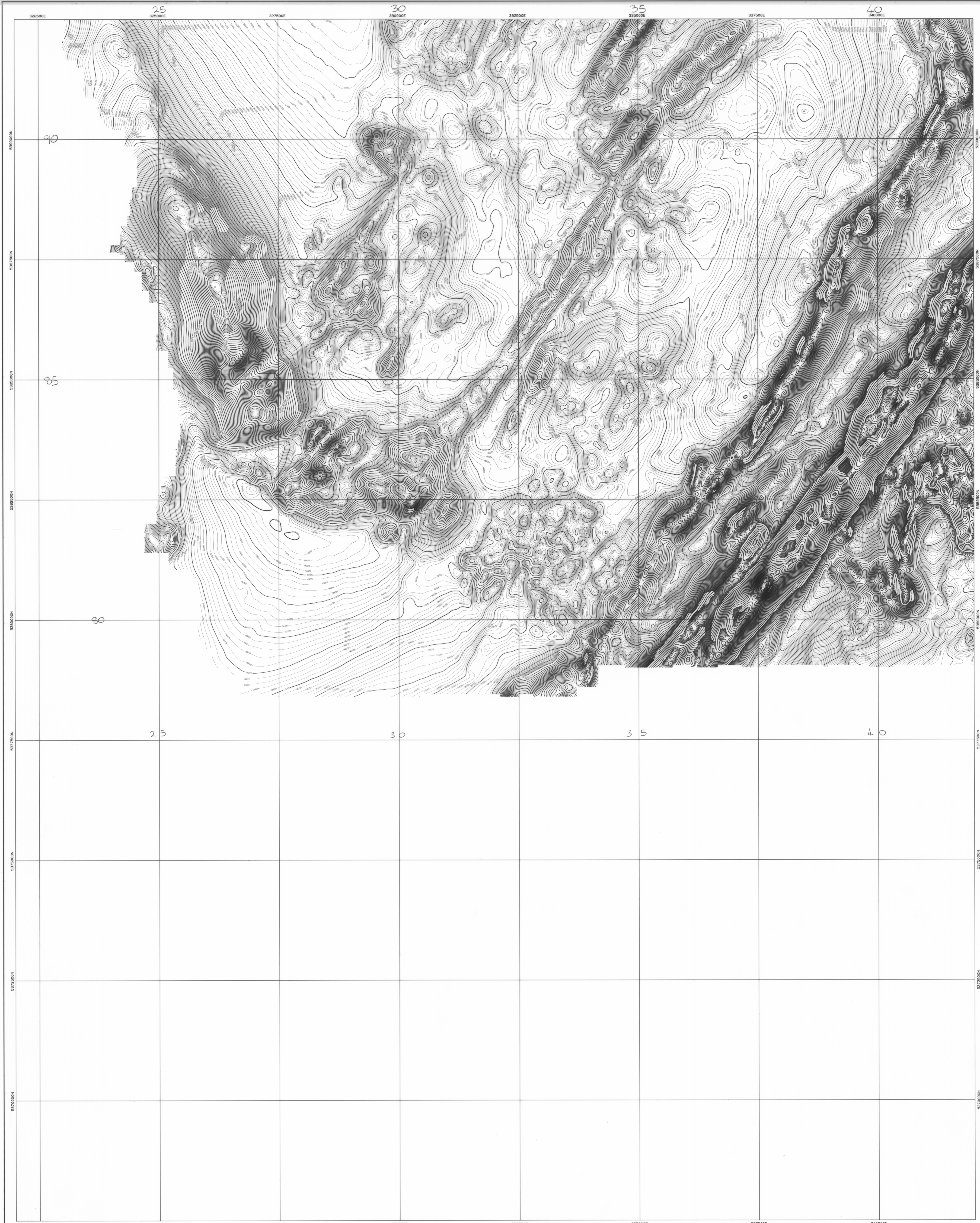


5 cm



AIRBORNE SURVEY SPECIFICATIONS

ACQUISITION BY: **TESLA AIRBORNE GEOSCIENCE**

JOB No. 742294
 DATE OF SURVEY: April 1996
 MAGNETOMETER: Scintrex Cesium Vapour Model 125 Resolution 0.001T
 SPECTROMETER: Exploration 69820 Crystal volume 33.3 litres Magnetometer 0.1 sec (approx 7s) Spectrometer 1.0 sec (approx 70s)
 RECORDING INTERVAL: 30m
 TERRAIN CLEARANCE: 200m flight lines, 2000m tie lines
 LINE SPACING: E-W flight lines, N-S tie lines
 LINE DIRECTION: E-W flight lines, N-S tie lines
 NAVIGATION: Differential GPS
 ACQUISITION SYSTEM: Tesla TAG3

DATA PROCESSING

PROCESSING BY: **TESLA-10**

SYSTEM PARALLAX REMOVED
 DIURNAL CORRECTIONS APPLIED
 IGSF REMOVED: 1995 model upgraded for secular variation to April 1996
 Base level: 62030.0 m, INCORPORATION: -74.98
 DATA TIE-LINE LEVELLED AND MICRO-LEVELLED
 GRID ALGORITHM: Bi-cubic spline
 GRID CELL SIZE: 50m x 50m

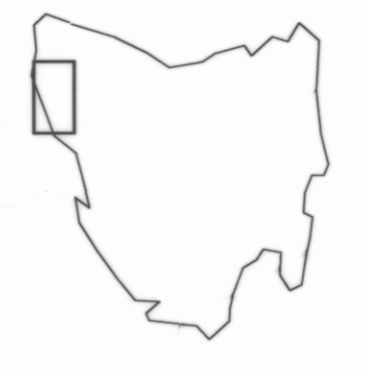
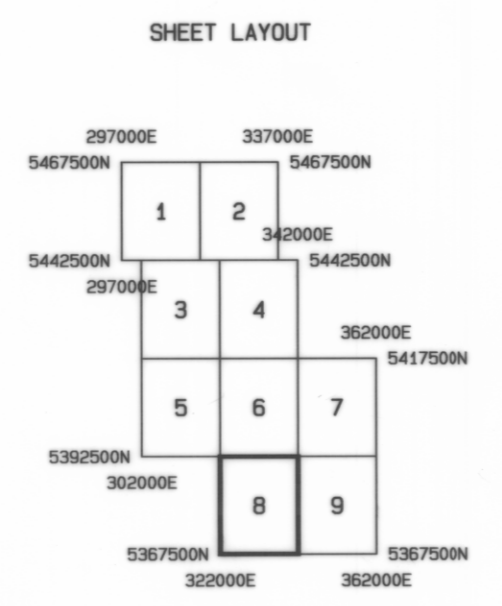
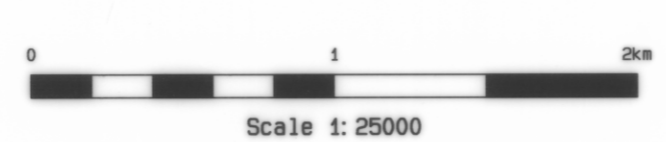
MAP PRESENTATION

PROJECTION: UTM
 GRID COORDINATES: AMG Zone 56
 COORDINATE DATUM: AGD 84

LEGEND

Contour interval: 2 nanoTesla

- 2500 nT Contours
- 250 nT Contours
- 50 nT Contours
- 10 nT Contours
- 2 nT Contours



**MINERAL RESOURCES TASMANIA
 AUSTRALIAN GEOLOGICAL SURVEY ORGANISATION**

NORTHWEST TASMANIA

TOTAL MAGNETIC INTENSITY
*Hardwicks; parts of Airbag, Inverness, Lumsdaine;
 small parts of Moolith and Spring*

DRAWN: TESLA-10 PTY LTD
 DATE: MAY 1996

SCALE 1:25000
 SHEET 8 of 9