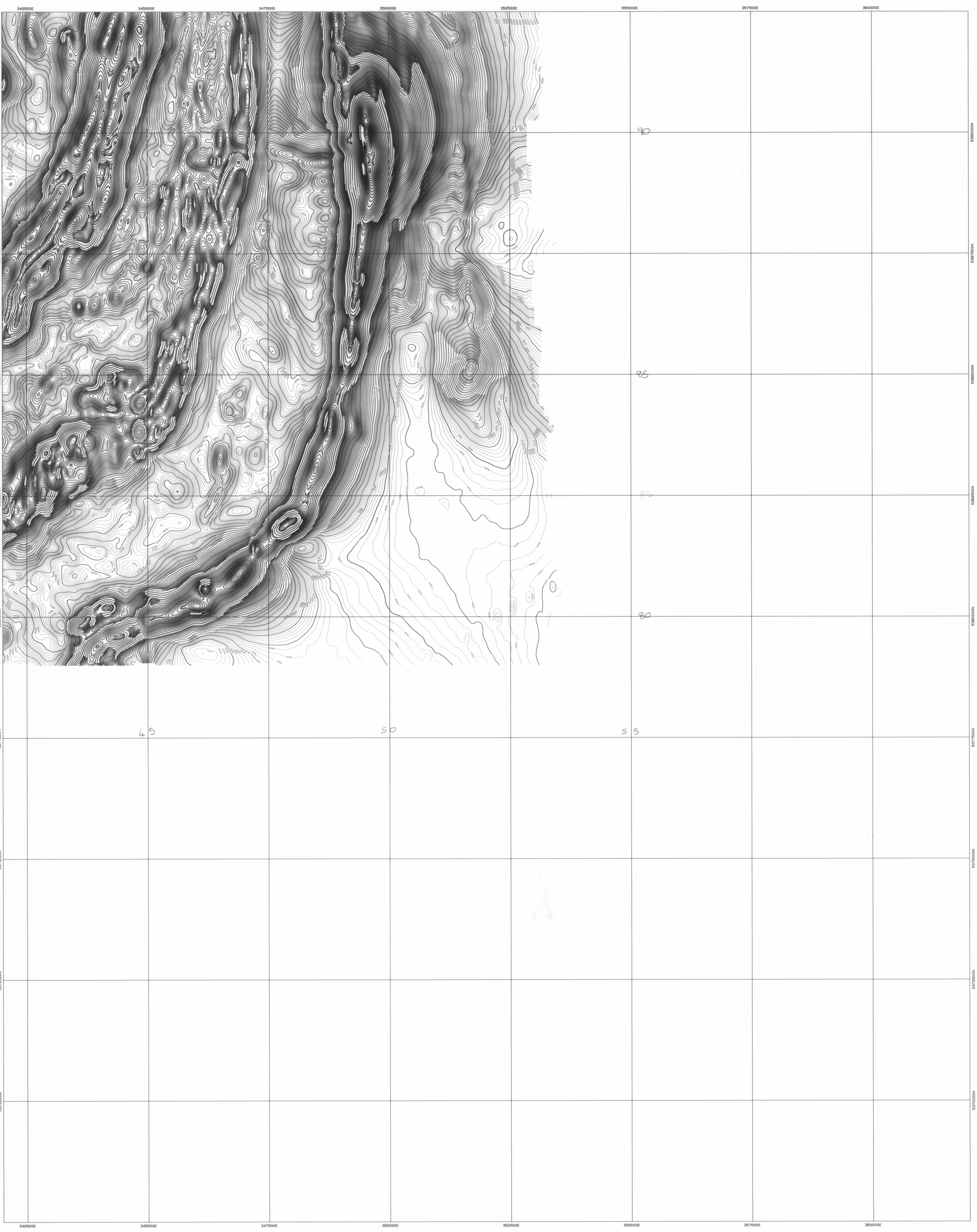


5 cm



**AIRBORNE SURVEY SPECIFICATIONS**

ACQUISITION BY: **TESLA AIRBORNE GEOSCIENCE**

JOB No. 1A2294

DATE OF SURVEY: April 1996

MAGNETOMETER: Scintrex Cesium Vapour  
Model: GCS  
Resolution: 0.005nT

SPECTROMETER: Exploration GR80  
Crystal volume: 33.5 litres

RECORDING INTERVAL: Magnetometer: 0.1 sec (approx 2s)  
Spectrometer: 1.0 sec (approx 70m)

TERRAIN CLEARANCE: 90m

LINE SPACING: 200m flight lines, 2000m tie lines

LINE DIRECTION: E-W flight lines, N-S tie lines

NAVIGATION: Novatel GPS  
Differentially Post Processed

ACQUISITION SYSTEM: Tesla TAG3

**DATA PROCESSING**

PROCESSING BY: **TESLA-10**

SYSTEM PARALLAX REMOVED

DILUTAL CORRECTIONS APPLIED

IGRF REMOVED: 1995 model upgraded for secular variation to April 1996  
Base level: 62030.0 nT, Inclination: -71.88

DATA TIE-LINE LEVELLED AND MICRO-LEVELLED

GRID ALGORITHM: Bi-cubic spline

GRID CELL SIZE: 50m x 50m

**MAP PRESENTATION**

PROJECTION: UTM

GRID COORDINATES: AMG Zone 56

COORDINATE DATUM: AGD 84

**LEGEND**

Contour Interval: 2 nanoTesla

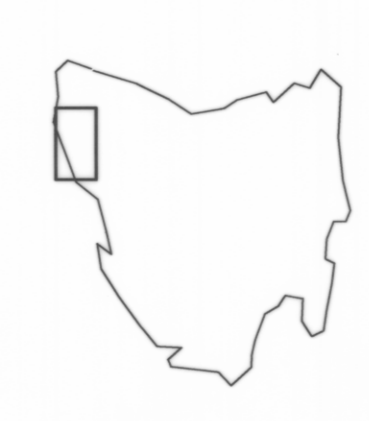
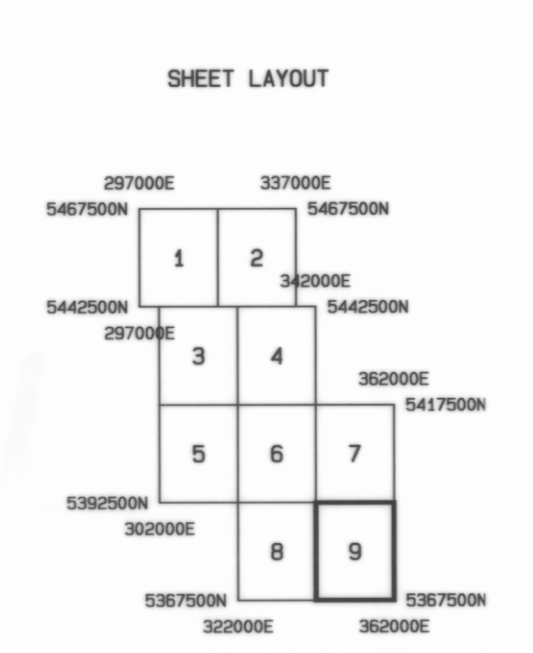
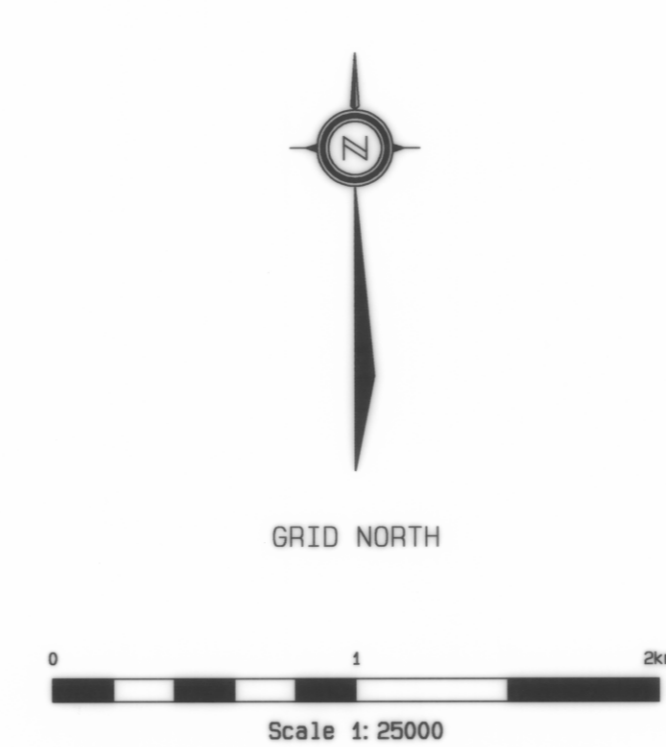
2500 nT Contours

250 nT Contours

50 nT Contours

10 nT Contours

2 nT Contours



**MINERAL RESOURCES TASMANIA  
AUSTRALIAN GEOLOGICAL SURVEY ORGANISATION**

**NORTHWEST TASMANIA**

**TOTAL MAGNETIC INTENSITY**

*Livingstone, small parts of Meredith & Springer*

DRAWN: TESLA-10 PTY LTD

DATE: MAY 1996

SCALE 1:25000

SHEET 9 of 9