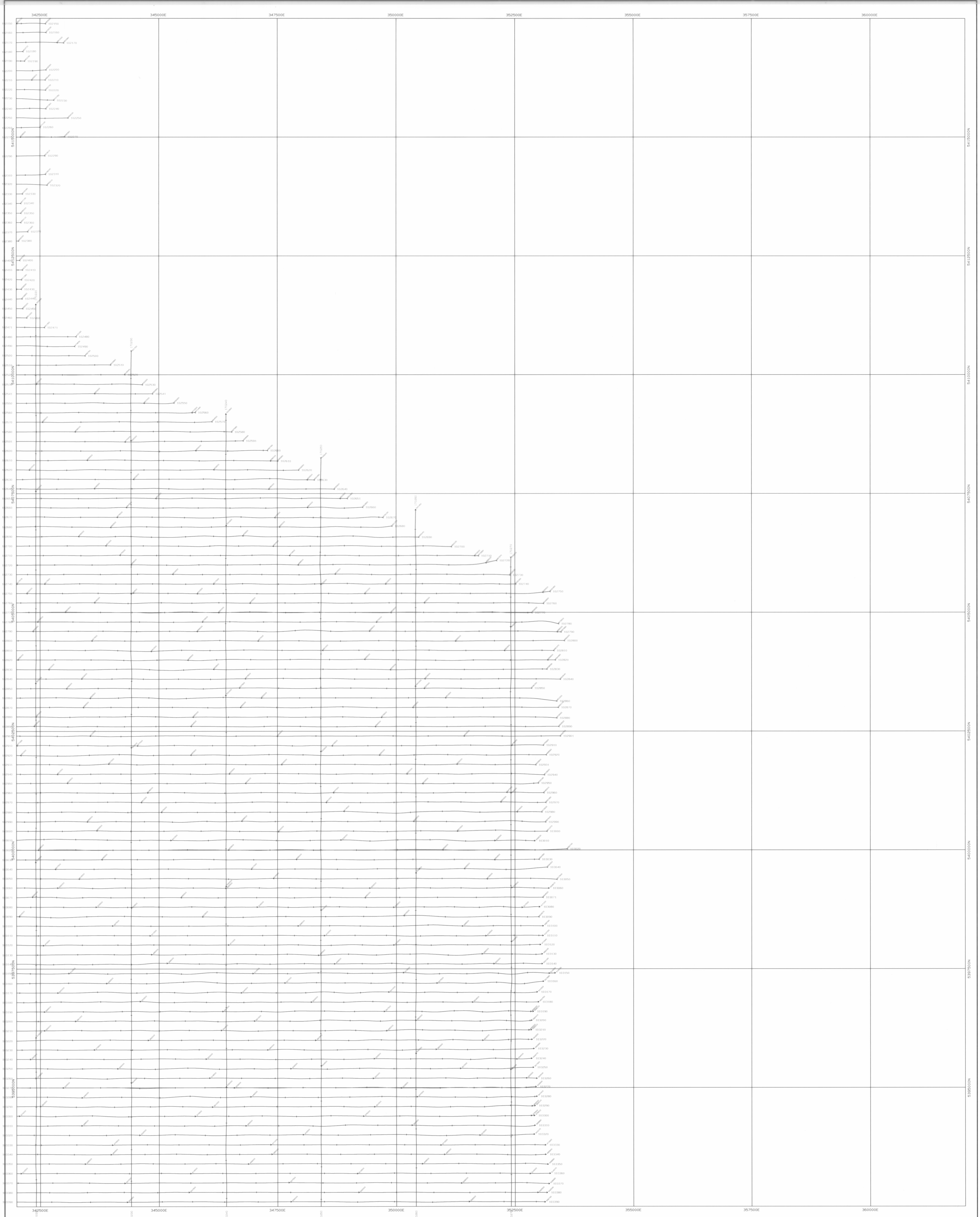


5 cm



**AIRBORNE SURVEY SPECIFICATIONS**

ACQUISITION BY: **ARBORNE GEOSCIENCE**

JOB No. TA2294  
 DATE OF SURVEY: April 1996  
 MAGNETOMETER: Scintrex Cesium Vapour Model CSJ  
 Resolution 0.001nT  
 SPECTROMETER: Exploration PR820  
 Crystal volume 33.9 litres  
 RECORDING INTERVAL: Magnetometer 0.1 sec (approx 7m)  
 Spectrometer 1.0 sec (approx 70m)  
 TERRAIN CLEARANCE: 50m  
 LINE SPACING: 200m flight lines, 2000m tie lines  
 LINE DIRECTION: E-W flight lines, N-S tie lines  
 NAVIGATION: Novatel GPS  
 Differentially Post Processed  
 ACQUISITION SYSTEM: Tesla TAG3

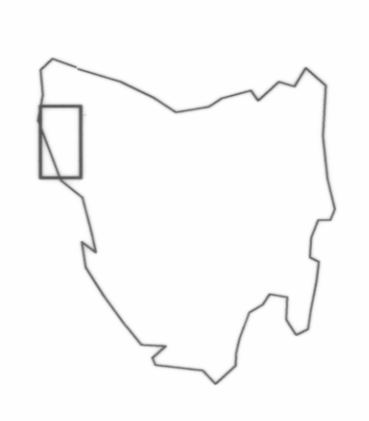
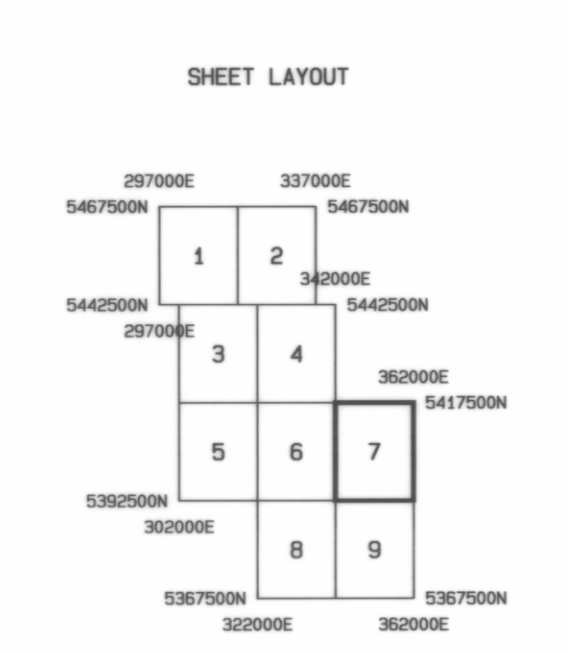
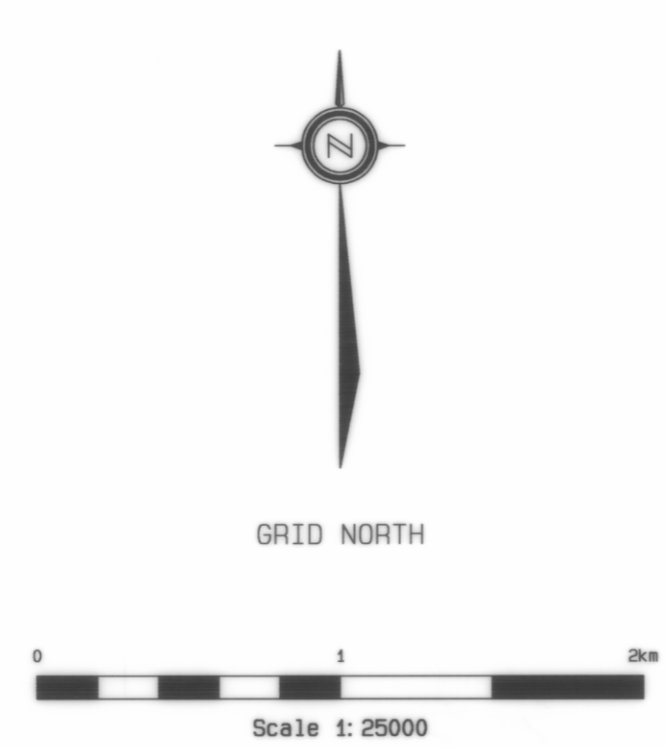
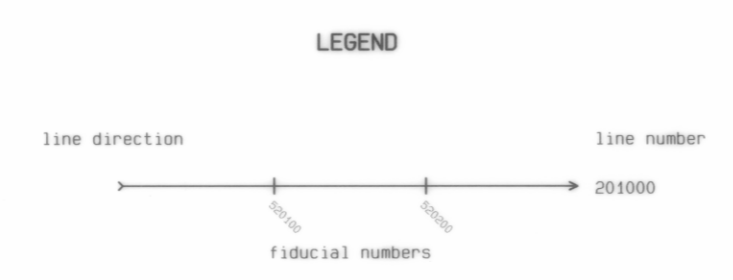
**DATA PROCESSING**

PROCESSING BY: **TESLA-IO**

SYSTEM PARALLAX REMOVED

**MAP PRESENTATION**

PROJECTION: UTM  
 GRID COORDINATES: AMG Zone 55  
 COORDINATE DATUM: AHD 84



MINERAL RESOURCES TASMANIA  
 AUSTRALIAN GEOLOGICAL SURVEY ORGANISATION

**NORTHWEST TASMANIA  
 FLIGHT PATH**

DRAWN: TESLA-IO PTY LTD  
 DATE: MAY 1996

SCALE 1:25000  
 SHEET 7 of 9