

**AIRBORNE SURVEY SPECIFICATIONS**

ACQUISITION BY: **TESLA AIRBORNE GEOSCIENCE**

JOB No. 142294  
 DATE OF SURVEY: April 1996  
 MAGNETOMETER: Scintrex Cesium Vapour Model 520 Resolution 0.001T  
 SPECTROMETER: Exploration GR820 Crystal Volume 33.5 litres Magnetometer 0.1 sec (approx 7m) Spectrometer 1.0 sec (approx 70m) 5m  
 TERRAIN CLEARANCE: 200m flight lines, 2000m tie lines  
 LINE SPACING: E-W flight lines, N-S tie lines  
 LINE DIRECTION: C-W flight lines, N-S tie lines  
 NAVIGATION: Novatel GPS Differentially Post Processed  
 ACQUISITION SYSTEM: Tesla TAG3

**DATA PROCESSING**

PROCESSING BY: **TESLA-IO**

SYSTEM PARALLAX REMOVED  
 COSMIC AIRCRAFT AND RADON BACKGROUNDS REMOVED  
 STRIPPING AND HEIGHT CORRECTIONS APPLIED  
 DATA TIE-LINE LEVELLED AND MICRO-LEVELLED  
 DATA ALGORITHM: Bi-cubic spline  
 GRID CELL SIZE: 50m x 50m

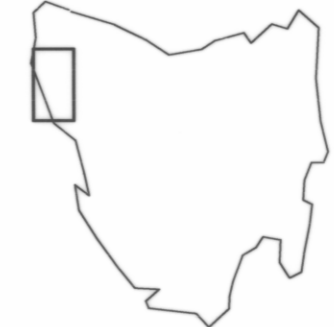
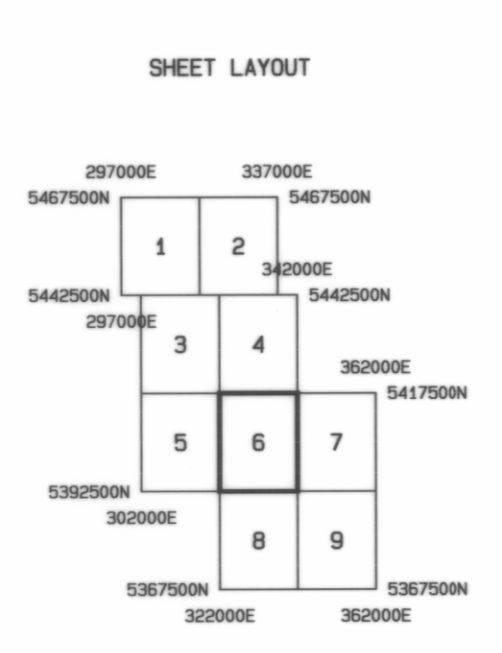
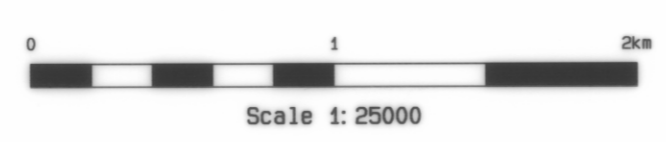
**MAP PRESENTATION**

UTM  
 AMG Zone 55  
 AED 84  
 COORDINATE DATUM:

**LEGEND**

Contour interval: 25 Counts per second

- 500 cps Contours
- 100 cps Contours
- 25 cps Contours



**MINERAL RESOURCES TASMANIA  
 AUSTRALIAN GEOLOGICAL SURVEY ORGANISATION**

**NORTHWEST TASMANIA  
 TOTAL COUNT**

DRAWN: TESLA-IO PTY LTD  
 DATE: MAY 1996

SCALE: 1:25000  
 SHEET 6 of 9