

**AIRBORNE SURVEY SPECIFICATIONS**

ACQUISITION BY: **TESLA AIRBORNE GEOSCIENCE**

JOB No: T42294  
 DATE OF SURVEY: April 1996  
 MAGNETOMETER: Scintrex Cesium Vector Model C30  
 Resolution 0.001nT  
 SPECTROMETER: Explorerplus GR800  
 Crystal volume 33.3 litres  
 RECORDING INTERVAL: Magnetometer 0.1 sec (approx 7n) Spectrometer 1.0 sec (approx 70n)  
 TERRAIN CLEARANCE: 60m  
 LINE SPACING: 200m flight lines, 2000m tie lines  
 LINE DIRECTION: E-W flight lines, N-S tie lines  
 NAVIGATION: Novatel GPS  
 ACQUISITION SYSTEM: Differentially Post Processed Tesla TAG3

**DATA PROCESSING**

PROCESSING BY: **TESLA-O**

SYSTEM PARALLAX REMOVED  
 COSMIC AIRCRAFT AND RADON BACKGROUNDS REMOVED  
 STRIPPING AND HEIGHT CORRECTIONS APPLIED  
 DATA TIE-LINE LEVELLED AND MICRO-LEVELLED  
 GRID ALGORITHM: B1-cubic spline  
 GRID CELL SIZE: 50m X 50m

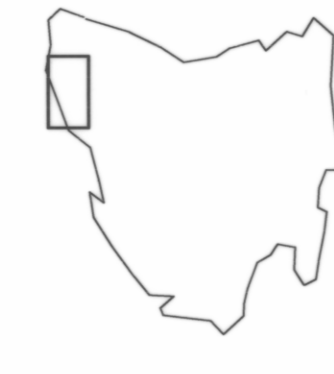
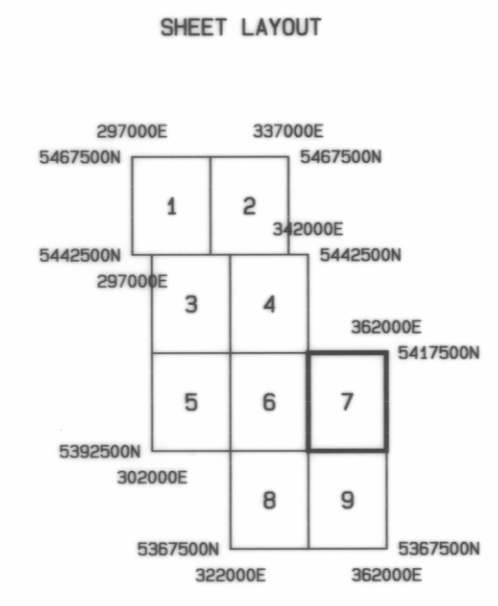
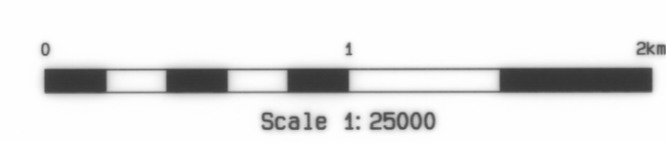
**MAP PRESENTATION**

PROJECTION: UTM  
 GRID COORDINATES: AMG Zone 95  
 COORDINATE DATUM: AD 84

**LEGEND**

Contour interval: 25 Counts per second

- 500 cps Contours
- 100 cps Contours
- 25 cps Contours



**MINERAL RESOURCES TASMANIA  
 AUSTRALIAN GEOLOGICAL SURVEY ORGANISATION**

**NORTHWEST TASMANIA  
 TOTAL COUNT**

DRAWN: TESLA-10 PTY LTD	SCALE 1:25000
DATE: MAY 1996	SHEET 7 of 9

5633G