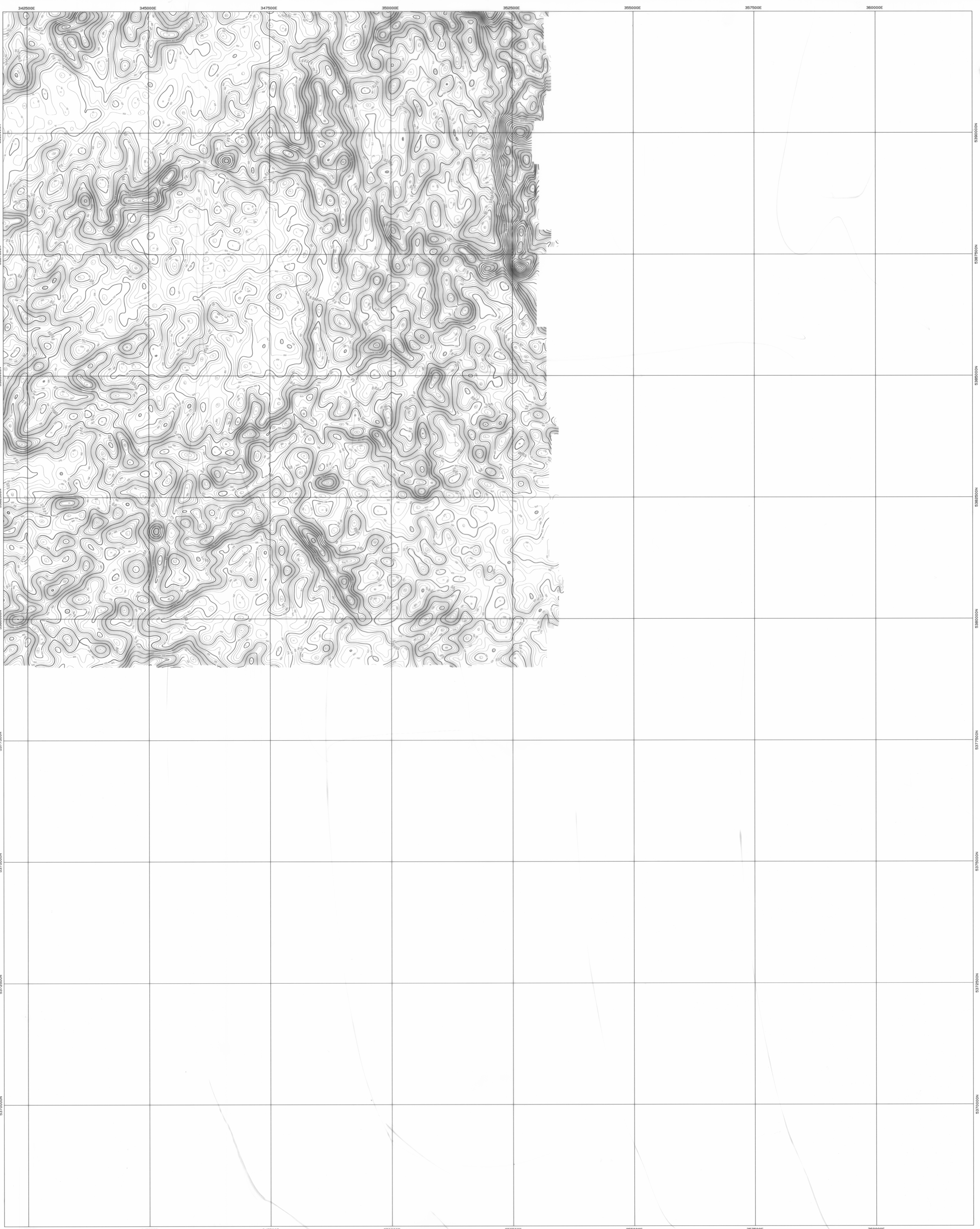


5 cm



AIRBORNE SURVEY SPECIFICATIONS

ACQUISITION BY: **TESLA AIRBORNE GEOSCIENCE**

JOB No. 142594
 DATE OF SURVEY: April 1996
 MAGNETOMETER: Scintrex Cesium Vapour Model 602
 Resolution 0.05nT
 SPECTROMETER: Exploration 9800
 Crystal volume 33.5 litres
 RECORDING INTERVAL: Magnetometer 0.1 sec (approx 7m)
 Spectrometer 1.0 sec (approx 70m)
 TERRAIN CLEARANCE: 90m
 LINE SPACING: 200m flight lines, 2000m tie lines
 LINE DIRECTION: E-W flight lines, N-S tie lines
 NAVIGATION: Novatel GPS
 Differentially Post Processed
 ACQUISITION SYSTEM: Tesla TAB3

DATA PROCESSING

PROCESSING BY: **TESLA-10**

SYSTEM PARALLAX REMOVED
 COSMIC, AIRCRAFT AND RADON BACKGROUNDS REMOVED
 STRIPPING AND HEIGHT CORRECTIONS APPLIED
 DATA TIE-LINE LEVELLED AND MICRO-LEVELLED
 GRID ALGORITHM: 81-cubic spline
 GRID CELL SIZE: 50m x 50m

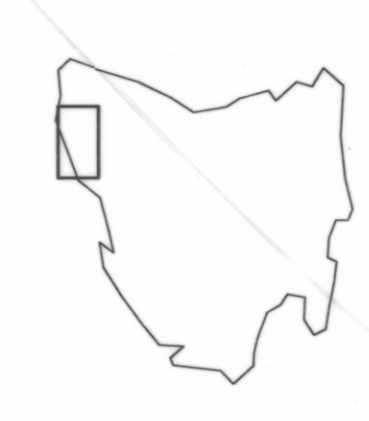
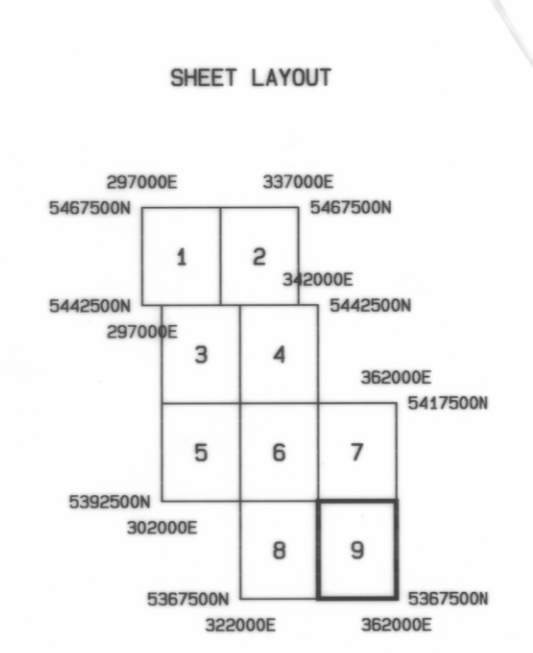
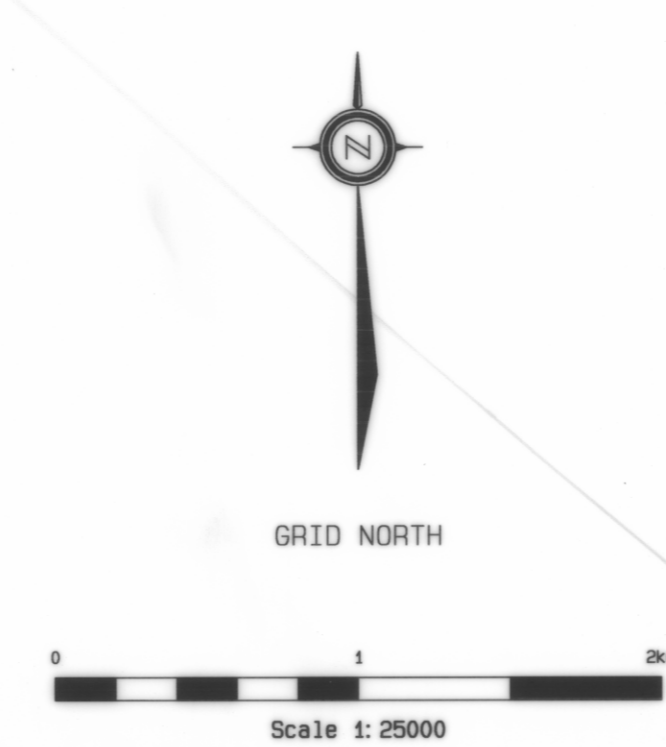
MAP PRESENTATION

PROJECTION: UTM
 GRID COORDINATES: AMG Zone 95
 COORDINATE DATUM: AGD 84

LEGEND

Contour interval: 25 Counts per second

- 900 cps Contours
- 100 cps Contours
- 25 cps Contours



**MINERAL RESOURCES TASMANIA
 AUSTRALIAN GEOLOGICAL SURVEY ORGANISATION**

**NORTHWEST TASMANIA
 TOTAL COUNT**

GRAPH: TESLA-10 PTY LTD
 DATE: MAY 1996

SCALE 1:25000
 SHEET 9 of 9