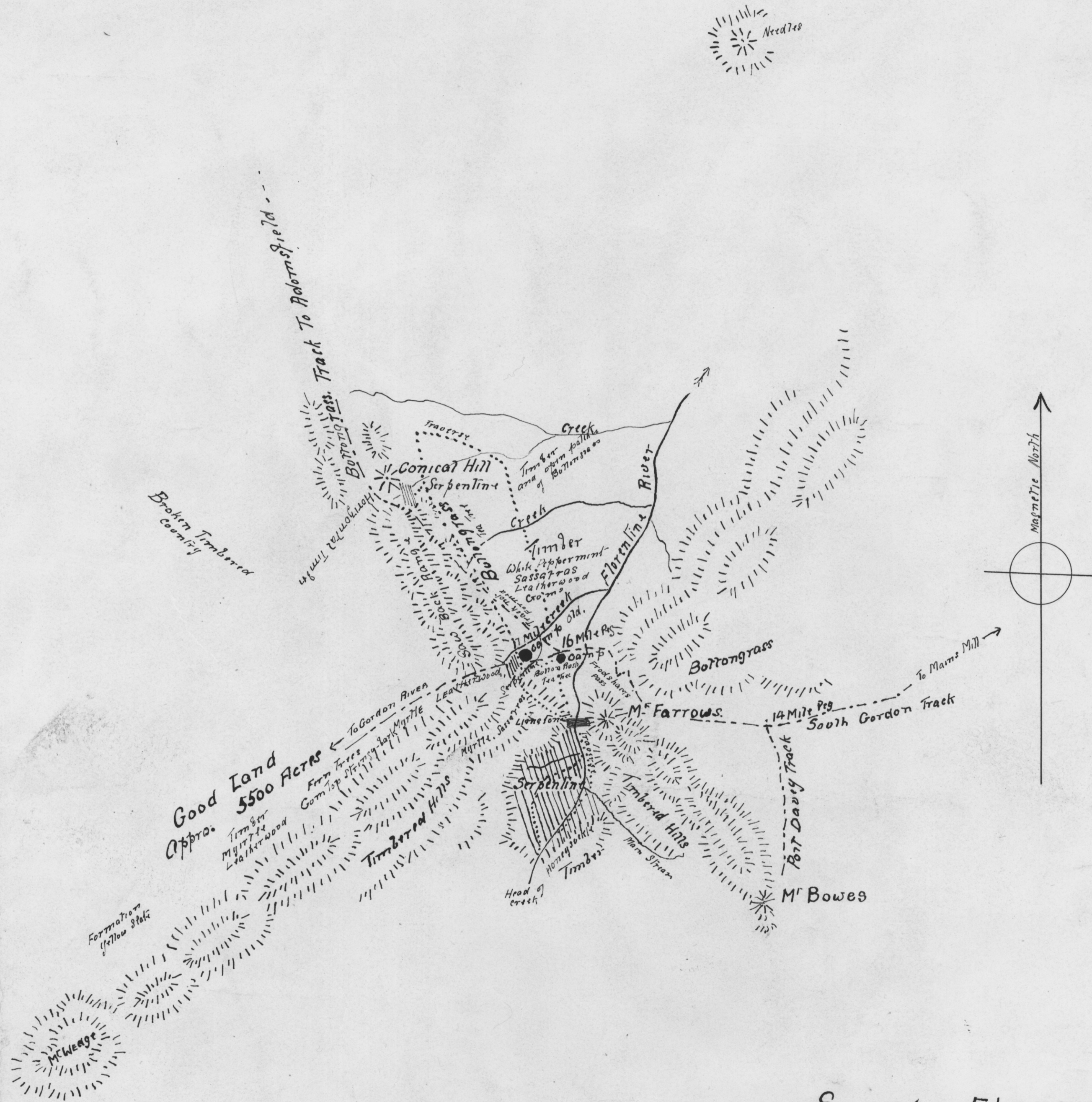


- Note -

I have just returned after spending one month prospecting in the head waters of the Florentine Valley. The features of the country traversed were put together by prometric compass, the accuracy of the map I do not guarantee. There is a good hut for travellers at the 12 Mile. This hut also serves for the Port Dorey track, the turn off of which is 2 Miles E. from here. The Old Depot hut near the Florentine River Bridge is down, the decking is also off the Florentine River Bridge. I followed the Adornfield track that branches at the 16 Mile peg as far as Conical Hill. It is an unperfected track. Keep grades & pass through boggy & timbered patches.

Edward J B Innes  
4/11/30



SOUTH FLORENTINE

SKETCH MAP

Edward J B Innes

4/11/30

Scale 1 inch = 1 Mile

- Serpentine
- Pool Traversed
- Good Tracks
- Lime Stone
- Camp

565/80