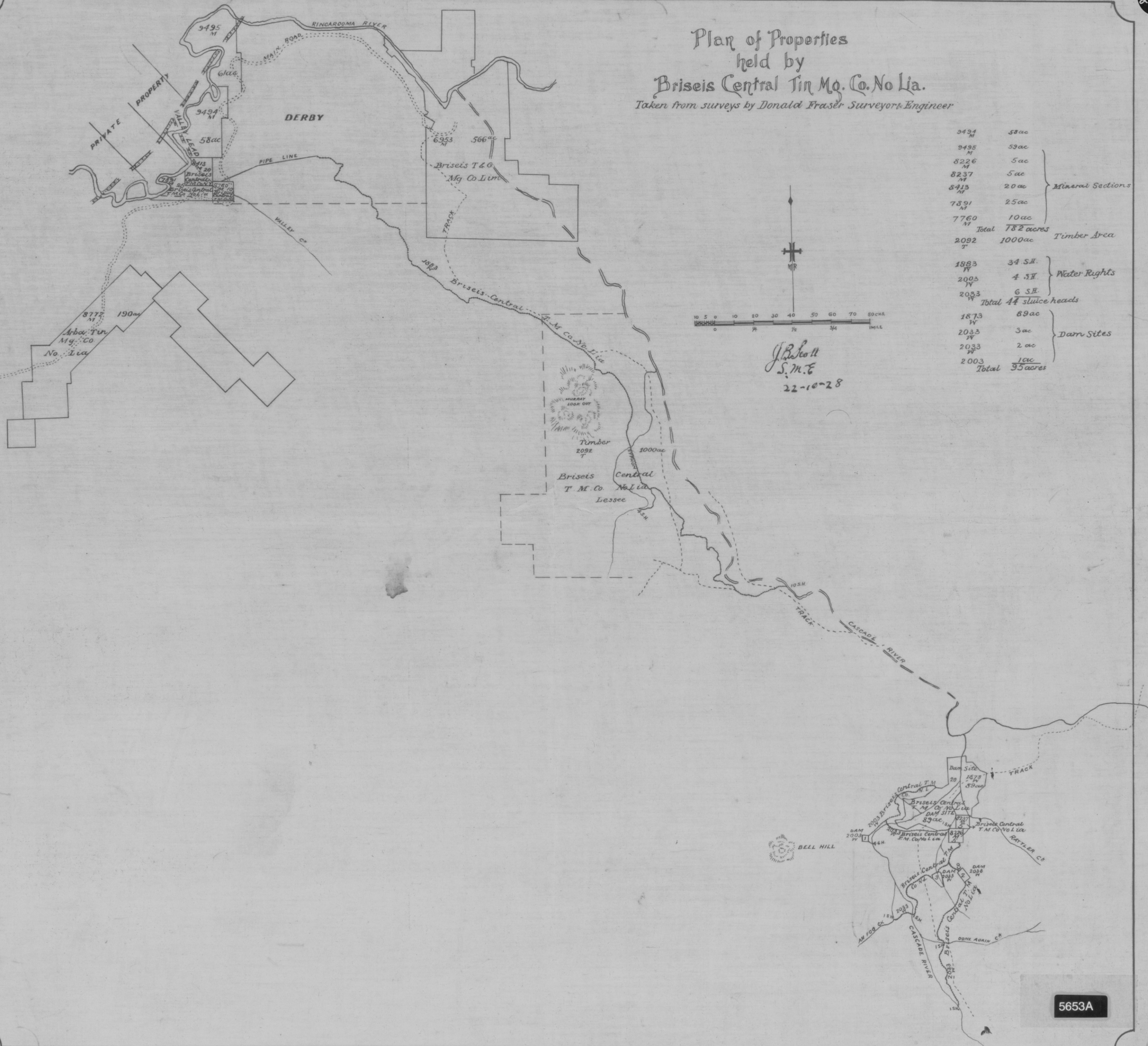


5 cm

Plan of Properties
held by
Briseis Central Tin Mg. Co. No. Lia.
Taken from surveys by Donald Fraser, Surveyor, Engineer



9494 M	58 ac	} Mineral Sections
9495 M	59 ac	
8226 M	5 ac	
8237 M	5 ac	
8413 M	20 ac	
7891 M	25 ac	} Timber Area
7760 M	10 ac	
Total	182 acres	
2092 T	1000 ac	} Water Rights
1883 W	34 S.H.	
2003 W	4 S.H.	
2033 W	6 S.H.	} Dam Sites
Total	44 sluice heads	
1873 W	89 ac	} Dam Sites
2033 W	3 ac	
2033 W	2 ac	
2003 W	1 ac	
Total	95 acres	

J. Bell
S.M.E.
22-10-28

5653A