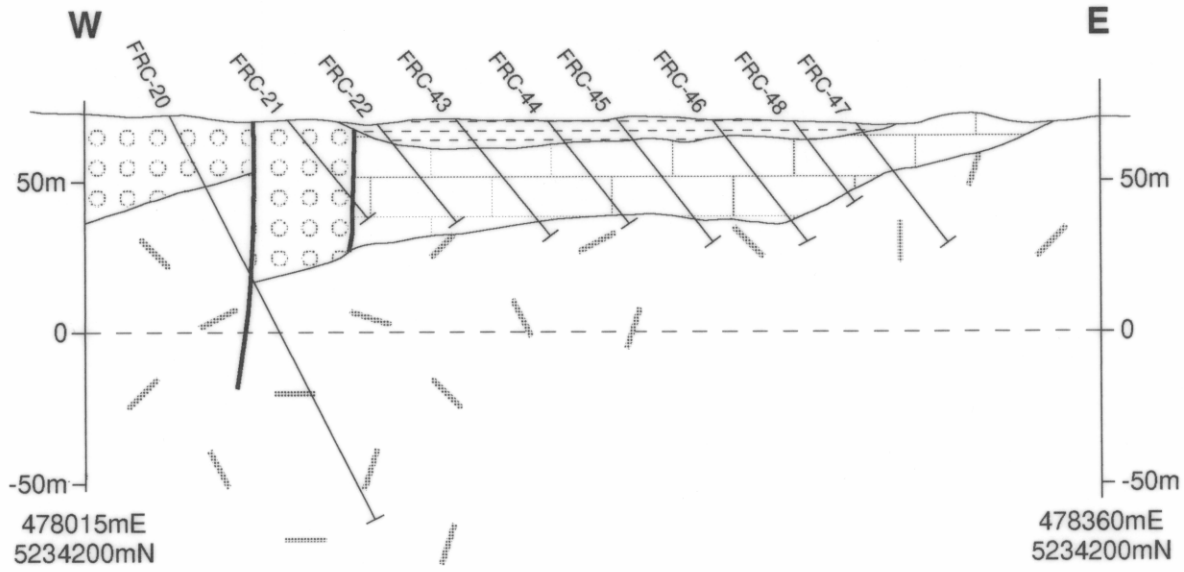
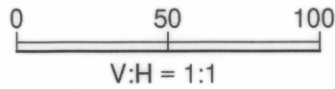
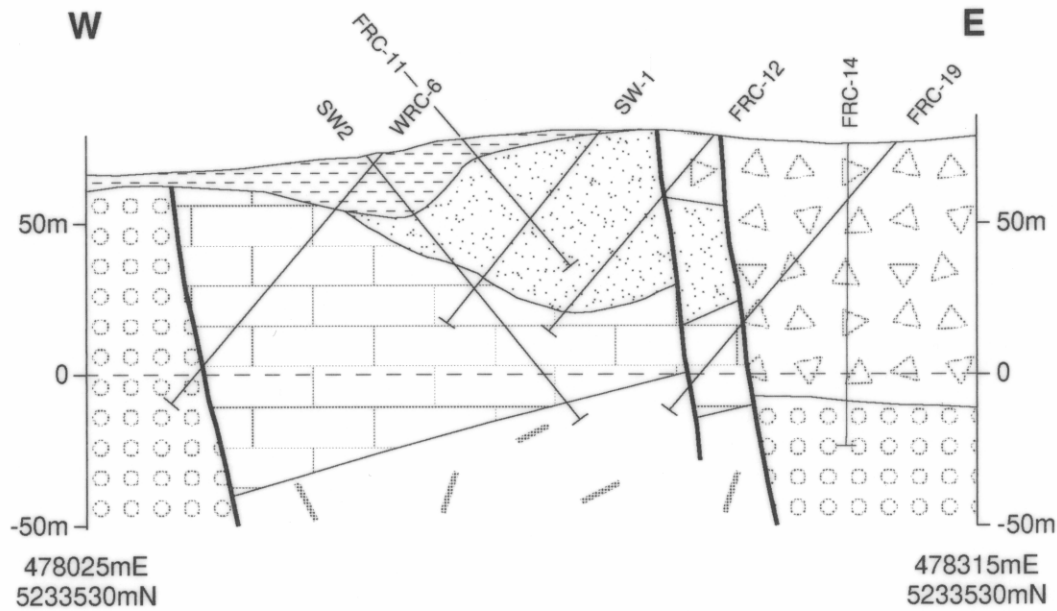


Section C



Section D



QUATERNARY		Surficial gravel, sand and clay (Fig. 5 only)	
JURASSIC		Dolerite - Weakly magnetic zone indicated (Fig. 3 only)	
CARBONIFEROUS - PERMIAN		Diamictite + mudstone of Lower Parmeener Supergroup	
CAMBRIAN		Dominantly mafic - ultramafic conglomerate	
PROTEROZOIC - TERTIARY		Silica clay deposits	
		Silica	
PROTEROZOIC		Skarn, marble	Weld River Group correlate
		Dolostone	
		Mudstone, siltstone of Humboldt Fm.	Clark Group correlate
		Quartz arenite of Needles Quartzite	

