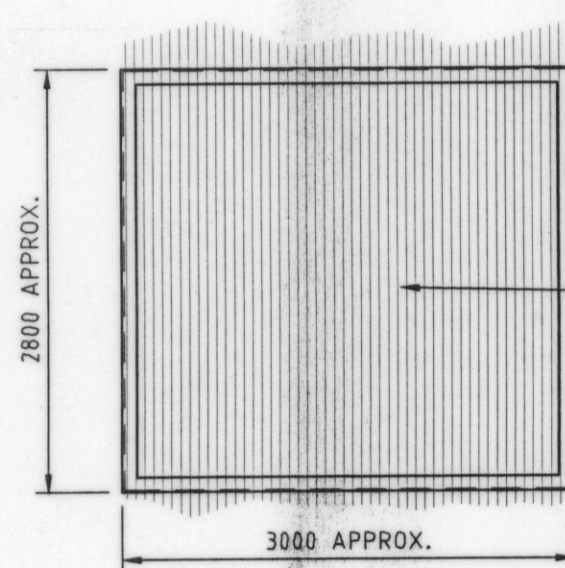


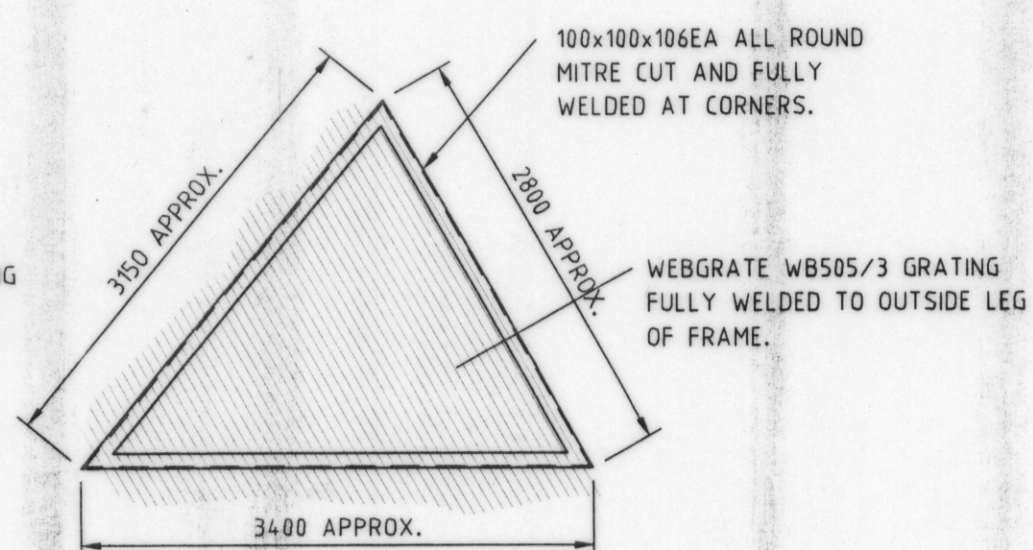
SCREEN CONSTRUCTION SEQUENCE

1. SITE MEASURE FOR SCREEN FRAMES.
2. WORKSHOP FABRICATE SCREEN FRAMES AND CONNECTIONS.
3. INSTALL UNGALVANIZED FRAMES AND CONNECTION COMPONENTS ON SITE.
4. FIT AND TRIM ALL GRATING ON SITE TO SUIT ROCK PROFILE.
5. REMOVE ALL FRAMES, CONNECTION COMPONENTS, AND GRATING AND RETURN TO WORKSHOP FOR GRATING BANDING AND WELDING OF GRATING TO FRAMES.
6. ALL FRAMES AND CONNECTION COMPONENTS TO BE HOT DIP GALVANIZED.
7. REINSTALL ALL FINISHED FRAMES ON SITE.

GREAT REPUBLIC MINE - No 1 UNDERLAY SHAFT - COVERS

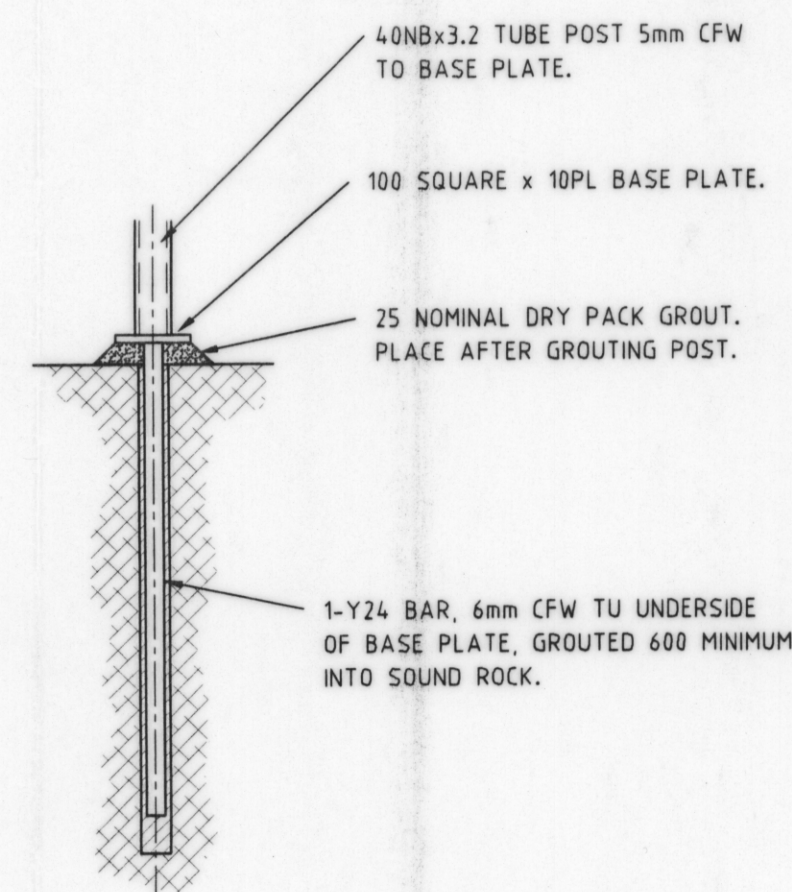


SCREEN S1

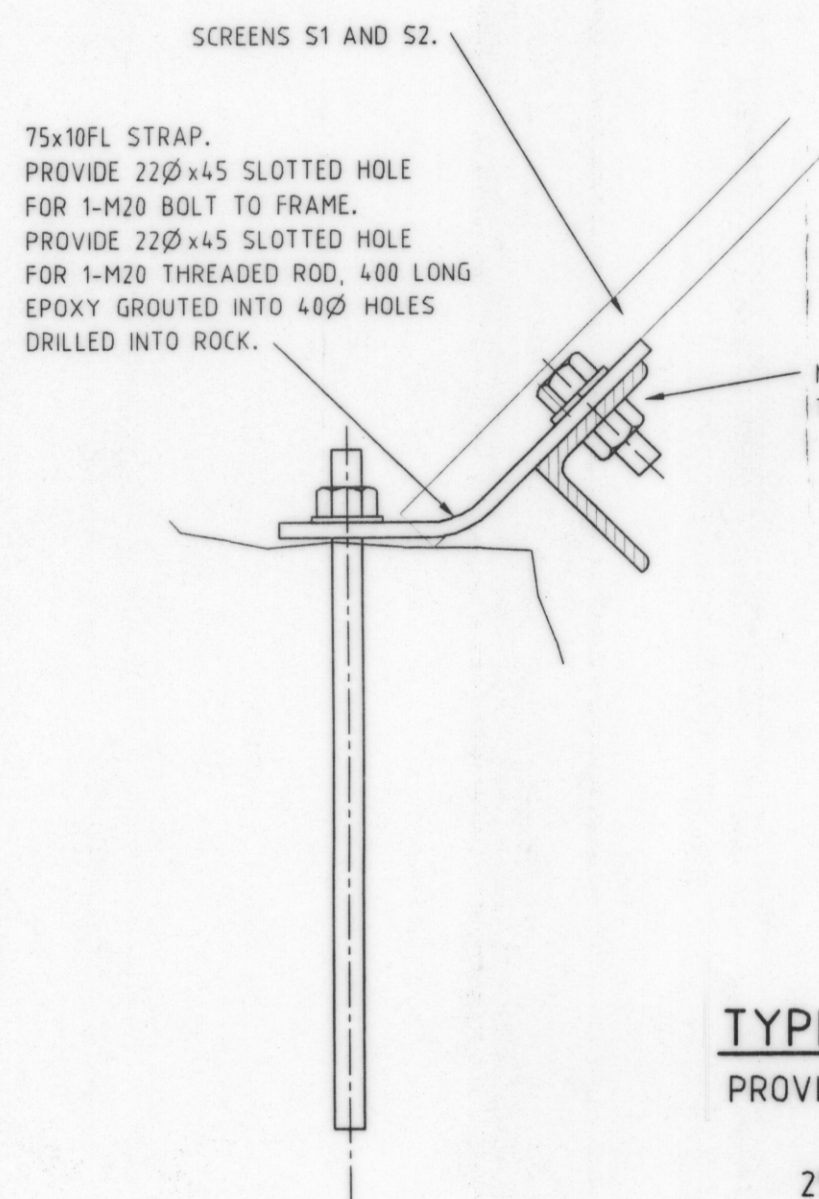


SCREEN S2

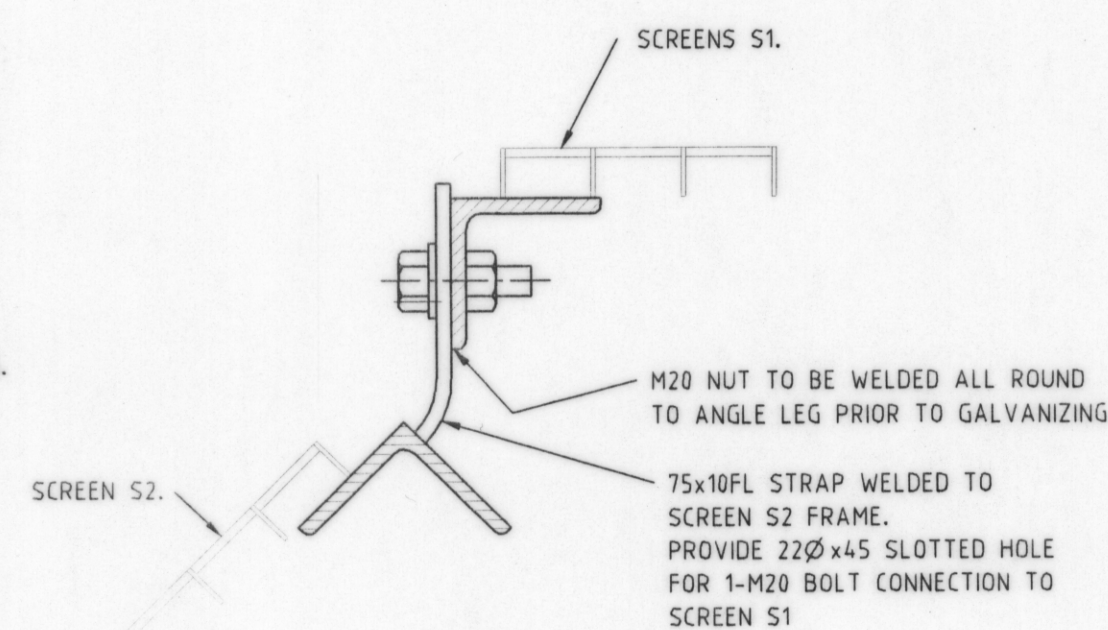
ALL DIMENSIONS TO BE VERIFIED ON SITE PRIOR TO FABRICATION AND AFTER INSTALLATION OF SCREEN S1.



DETAIL 3
SCALE 1:10



DETAIL 1
SCALE 1:5



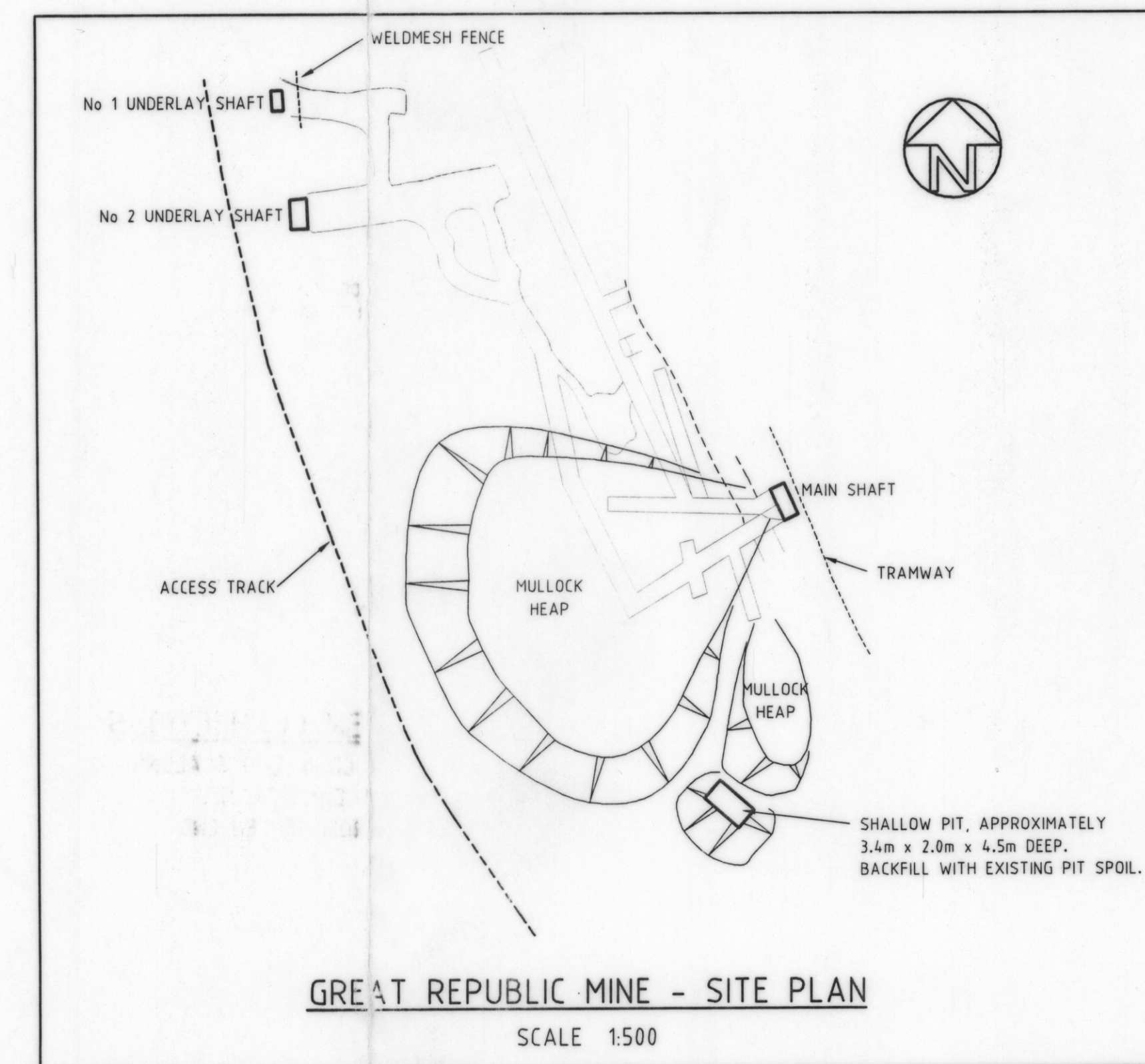
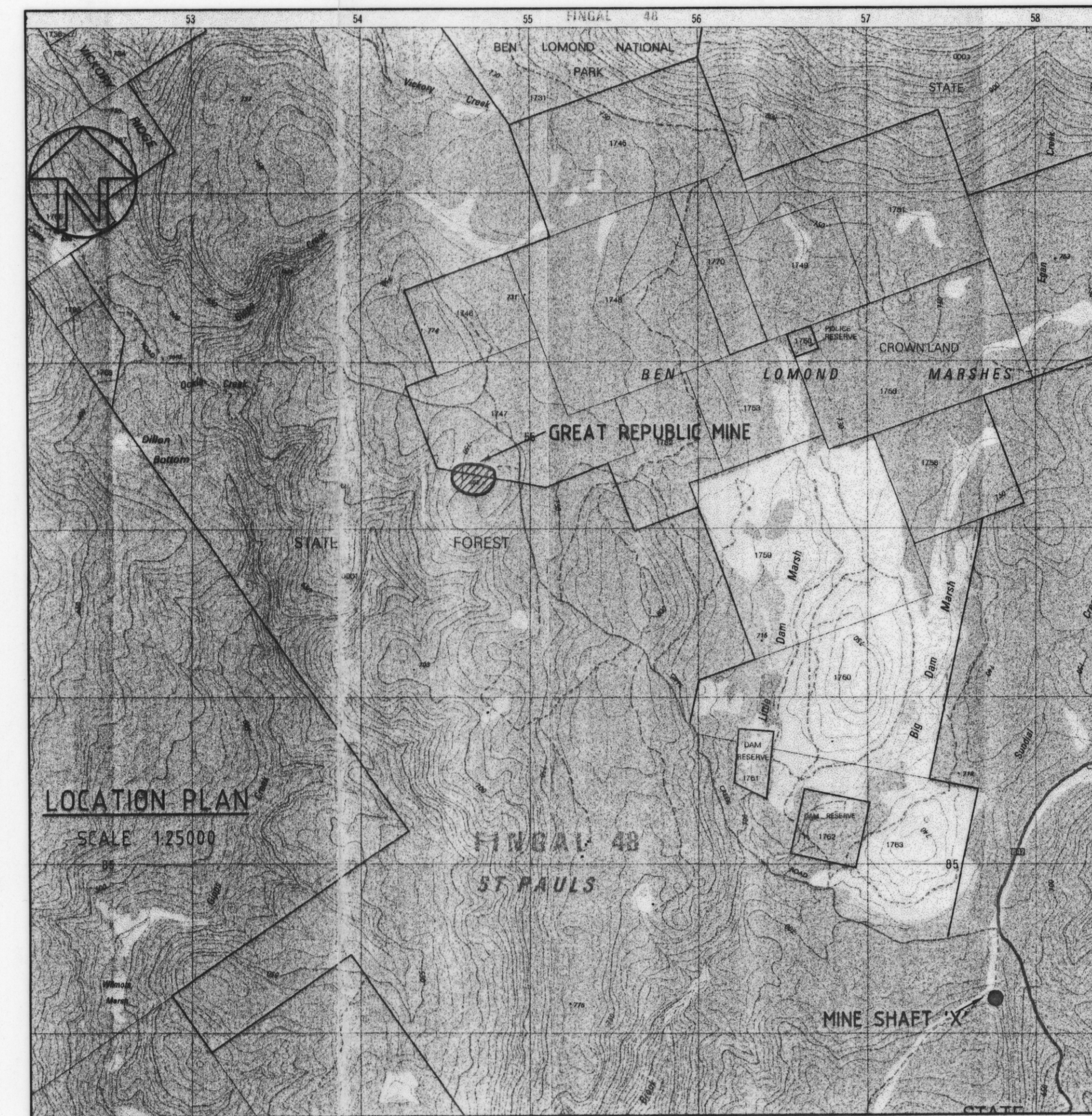
DETAIL 2
SCALE 1:5

TYPICAL SCREEN CONNECTIONS

PROVIDE 3 MINIMUM CONNECTIONS ALONG EACH SIDE OF EACH FRAME. 250 NOMINAL FROM SCREEN END

NOTE:

1. CONCRETE STRENGTH - $f_c = 32\text{MPa}$ AT 28 DAYS.
2. ALL WELDS TO BE 6mm CFW UNLESS NOTED OTHERWISE.
3. ALL STEELWORK TO BE HOT DIP GALVANIZED AFTER FABRICATION.
4. ALL BOLTS TO BE GALVANIZED M12/4.6/5 UNLESS OTHERWISE NOTED.
5. ALL EXPOSED THREADS TO BE WELL BURRED AFTER INSTALLATION.



Revisions REV. No Date Description	Thompson & Brett Pty. Ltd. Consulting Engineers 6 Bayfield Street, Rosny Park, 7018 Phone (03) 6244 6633 Fax. (03) 6244 6221 E-mail : tb@trump.net.au		Design RC Date APR '99 Scale 1:50 UNO A1	Client & Project MINERAL RESOURCES TASMANIA GIPPS CREEK OPEN SHAFTS	Drawing Title MINE SHAFT COVERS CONCRETE AND STEELWORK DETAILS - 1/3
			Drawn MFL Date APR '99 File MINES-09		Acad Name 183001
			Design Check Date Controlled Document Yes No		Issue AS CONSTRUCTED
			Drawing Check Date Approved Director		Geocomp No. Drawing No. 99 - 1830 - 01 Rev.

See File 68854.PTY

5845A

642

DETAILS 1/3

